

AIOR
As discussed
PI check all vehicles
Belong to us and
Mod on VDC
9/05

Same
complete
batch down
to ASC Jaipur
on 19/3/05.
AM

712
211
Vehicle
on 21/3/05
AM

DAIMLERCHRYSLER All 13

DaimlerChrysler
India Private Limited

Pune, March 03, 2005

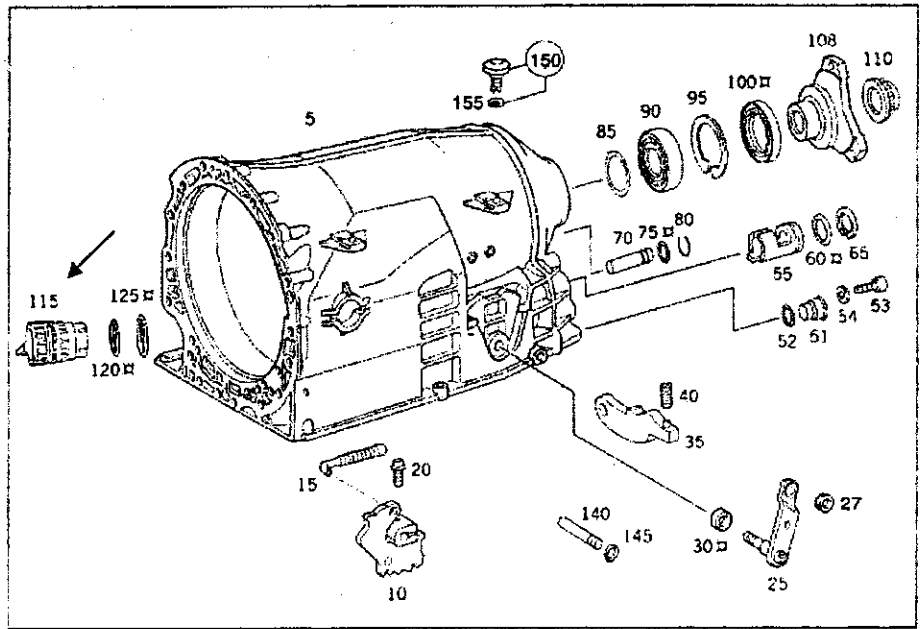
All Workshop Incharge
DC India dealerships / ASC

Customer Satisfaction Campaign – Replace ATF Adaptor Plug – Model W 203, W211 & W220.

Dear All,

Please refer to our Service Information IND 27/001 dated 24th February 2005 regarding precaution to be taken while replacing the ATF adaptor plug.

In a view to avoid leakage of Automatic Transmission fluid leakage through ATF adaptor plug, we need to replace the same (fig - 115) of all the vehicles mentioned in the attached list.



Please remove the ATF adaptor plug (115) only when the transmission is cold.

..... 2

: 2 :

Part Nos. : Refer EPC

Operation text and flat rates:

Operation text: Replace ATF Adaptor Plug

Operation No. - 02 2710 01

Flat rates - 0.8 Hrs.

Damage code - 27 270 04 7

Cost Settlement:

A warranty / goodwill claim for the cost of labour and material can be submitted through the usual warranty process channel quoting **accounting no. 27 270 01.**

Completion Deadline:

The activity is to be completed **during next visit of the vehicle** to your workshop. The target completion date for this campaign is **31- August 2005.** Please note that the locations mentioned in the list are only indicative and any vehicle mentioned in the list visiting your workshop has to be attended for this Campaign.

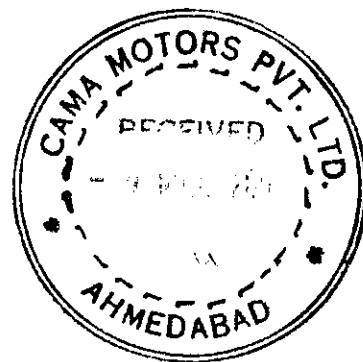
Even though all the vehicles mentioned in the enclosed list are equally important, you are expected to attend the S- Class vehicles on top priority. You may achieve the same by calling the affected S- Class vehicles for special Check - up Campaigns.

Please advise your concerned staff accordingly and ensure that each vehicle (mentioned in the list) visiting your workshop is attended for this action.

Please acknowledge receipt of this letter and in case of any queries, please feel free to contact us.

Thanking you,

With best regards,
DaimlerChrysler India Private Limited



D. Chandavarkar
D. Chandavarkar
General Manager
After-Sales

Ashish Salvi
Ashish Salvi
Divisional Manager
Field Service

Copies to - DCIPL Service Representatives} for close follow up with the workshops.

Encl. - As above

9/3/05 *10/3/05*

DAIMLERCHRYSLER

Service Information

Distribution : Dealers + Service Centres
DCIPL Field Service Rep.

x
x

24th February 2005

S. I. No. - IND 27/001

 Passenger Car

Applicable to: All models

Kind Attention - Workshop Managers

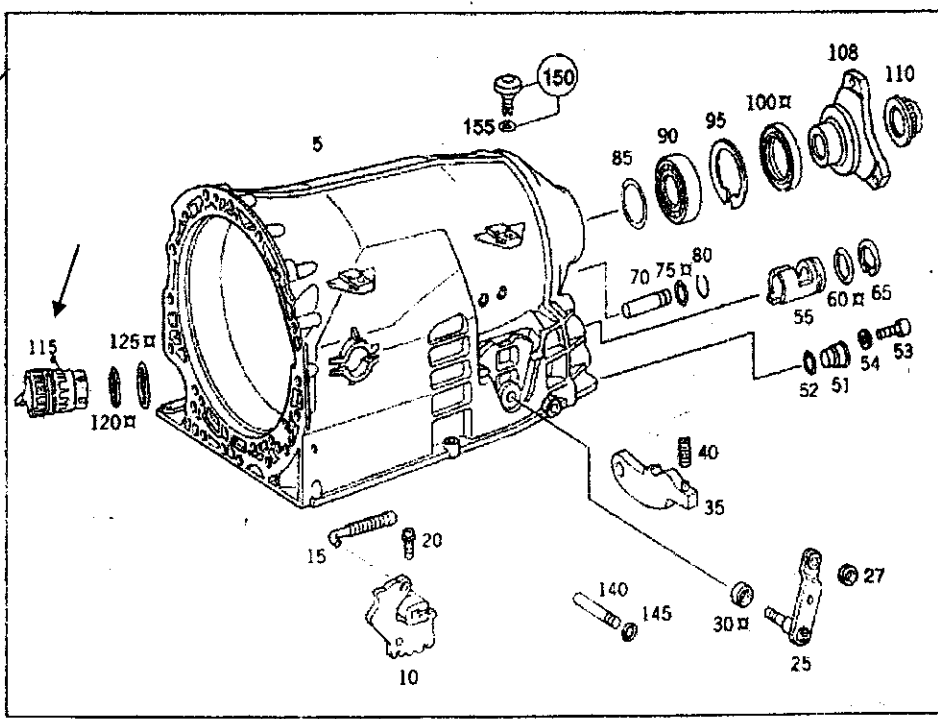
Dear All,

It has been reported that while replacing the ATF Adaptor plug, the centre screw does not come out and rotates in the same place. In this case the entire valve body assy. is required to be removed for the removal of adaptor plug by damaging the Y3/6 electro hydro unit (Part No. A 140 270 08 61).

To avoid the above situation, the screw of the ATF should never be removed when the transmission is hot. The excessive heat causes the metallic threads in the valve body to get detached and rotate along with the screw.

Thus please remove the ATF adaptor plug (115) only when the transmission is cold.

Handwritten note:
11/15
Zaamin Patel



Handwritten signature: Dhany Kumar

Handwritten text:
Mr. Ziauddin
concerned to all
in field
2002

: 2 :

Kindly ensure that your concerned staff is well aware of the above.

In case of any queries, please feel free to contact us.

Thanking you,

With best regards,

DaimlerChrysler India Private Limited

D. Chandavarkar
General Manager
After-Sales

Ashish salvi
Divisional Manager
Field Service

Copy to - DC India Service Representatives for necessary follow-up.

1	C200K	WDB2030426A645053	X
2	C200K	WDB2030426A645054	X
3	C200K	WDB2030426A645056	X
4	C200K	WDB2030426A645057	X
5	C200K	WDB2030426A645058	X
6	C200K	WDB2030426A645059	X
7	C200K	WDB2030426A645060	X
8	C200K	WDB2030426A645062	X
9	C200K	WDB2030426A645063	X
10	C200K	WDB2030426A645064	X
11	C200K	WDB2030426A645065	X
12	C200K	WDB2030426A645067	X
13	C200K	WDB2030426A645069	X
14	C200K	WDB2030426A645070	X
15	C200K	WDB2030426A658344	X
16	C200K	WDB2030426A658345	X
17	C200K	WDB2030426A658349	X
18	C200K	WDB2030426A658353	X
19	C200K	WDB2030426A658358	X
20	C200K	WDB2030426A658360	X
21	C200K	WDB2030426A658361	X
22	C200K	WDB2030426A658362	X
23	C200K	WDB2030426A658364	X
24	C200K	WDB2030426A658368	X
25	C200K	WDB2030426A658372	X
26	C200K	WDB2030426A658373	X
27	C200K	WDB2030426A658374	X
28	C200K	WDB2030426A658375	X
29	C200K	WDB2030426A658376	X
30	C200K	WDB2030426A658378	X
31	C200K	WDB2030426A658379	X
32	C200K	WDB2030426A658380	Symphony Comfort Systems Ltd. - 590 - Albal
33	C200K	WDB2030426A658382	X
34	C200K	WDB2030426A658383	X
35	C200K	WDB2030426A658384	X
36	C200K	WDB2030426A658386	X
37	C200K	WDB2030426A658387	X
38	C200K	WDB2030426A658390	X
39	C200K	WDB2030426A658391	X
40	C200K	WDB2030426A658392	X

41	C200K	WDB2030426A658395	X
42	C200K	WDB2030426A658396	X
43	C200K	WDB2030426A658397	X
44	C200K	WDB2030426A658399	X
45	C200K	WDB2030426A658400	Mr. Gopal Mehrotra
46	C200K	WDB2030426A658402	X
47	C200K	WDB2030426A670134	X
48	C200K	WDB2030426A670136	X
49	C200K	WDB2030426A670137	X
50	C200K	WDB2030426A670138	X
51	C200K	WDB2030426A670140	X
52	C200K	WDB2030426A670141	X
53	C200K	WDB2030426A670143	X
54	C200K	WDB2030426A670144	X
55	C200K	WDB2030426A670145	X
56	C200K	WDB2030426A670146	X
57	C200K	WDB2030426A670147	X
58	C200K	WDB2030426A670148	X
59	C200K	WDB2030426A670149	X
60	C200K	WDB2030426A670150	X
61	C200K	WDB2030426A670151	X
62	C200K	WDB2030426A670152	X
63	C200K	WDB2030426A670153	X
64	C200K	WDB2030426A670154	X
65	C200K	WDB2030426A670156	X
66	C200K	WDB2030426A670157	X
67	C200K	WDB2030426A670159	X
68	C200K	WDB2030426A670160	X
69	C200K	WDB2030426A670161	X
70	C200K	WDB2030426A670162	X
71	C200K	WDB2030426A670163	X
72	C200K	WDB2030426A670164	X
73	C200K	WDB2030426A670165	X
74	C200K	WDB2030426A670166	X
75	C200K	WDB2030426A670167	X
76	C200K	WDB2030426A670168	Mr. Naserh Agarwal
77	C200K	WDB2030426A682539	X
78	C200K	WDB2030426A682540	X
79	C200K	WDB2030426A682541	X
80	C200K	WDB2030426A682542	X

Mr. Gopal Mehrotra. JAIPUR ⇒ 567

19-5-05
Surat - 560

81	C200K	WDB2030426A682543	X
82	C200K	WDB2030426A682544	X
83	C200K	WDB2030426A682545	X
84	C200K	WDB2030426A682546	X
85	C200K	WDB2030426A682547	X
86	C200K	WDB2030426A682548	X
87	C200K	WDB2030426A682549	X
88	C200K	WDB2030426A682550	X
89	C200K	WDB2030426A682551	X
90	C200K	WDB2030426A682552	X
91	C200K	WDB2030426A682554	X
92	C200K	WDB2030426A682555	X
93	C200K	WDB2030426A682556	X
94	C200K	WDB2030426A682557	X
95	C200K	WDB2030426A682558	X
96	C200K	WDB2030426A682559	X
97	C200K	WDB2030426A682561	X
98	C200K	WDB2030426A682562	X
99	C200K	WDB2030426A682563	X
100	C200K	WDB2030426A682564	X
101	C200K	WDB2030426A682565	X
102	C200K	WDB2030426A682566	X
103	C200K	WDB2030426A682567	X
104	C200K	WDB2030426A682568	X
105	C200K	WDB2030426A682569	X
106	C200K	WDB2030426A682570	X
107	C200K	WDB2030426A682571	X
✓ 108	C200K	WDB2030426A682572	Optima Diamond Tools Pvt. Ltd. - 572
109	C200K	WDB2030426A682573	X
110	C200K	WDB2030426A682574	X
111	C200K	WDB2030426A695597	X
112	C200K	WDB2030426A695598	X
113	C200K	WDB2030426A695599	X
114	C200K	WDB2030426A695600	X
115	C200K	WDB2030426A695601	X
116	C200K	WDB2030426A695602	X
117	C200K	WDB2030426A695603	X
118	C200K	WDB2030426A695604	X
119	C200K	WDB2030426A695605	X
120	C200K	WDB2030426A695606	X

121	C200K	WDB2030426A695607	X
122	C200K	WDB2030426A695608	X
123	C200K	WDB2030426A695609	X
124	C200K	WDB2030426A695610	X
125	C200K	WDB2030426A695611	X
126	C200K	WDB2030426A695612	X
127	C200K	WDB2030426A695613	X
128	C200K	WDB2030426A695614	X
129	C200K	WDB2030426A695615	X
130	C200K	WDB2030426A695616	X
131	C200K	WDB2030426A695617	X
132	C200K	WDB2030426A695618	X
133	C200K	WDB2030426A695619	X
134	C200K	WDB2030426A695620	X
135	C200K	WDB2030426A695621	X
136	C200K	WDB2030426A695622	X
137	C200K	WDB2030426A695623	X
138	C200K	WDB2030426A695624	X
139	C200K	WDB2030426A695625	X
140	C200K	WDB2030426A695626	X
141	C200K	WDB2030426A695627	X
142	C200K	WDB2030426A695628	X
143	C200K	WDB2030426A695629	X
144	C200K	WDB2030426A695630	X
145	C200K	WDB2030426A695631	X
146	C200K	WDB2030426A695632	X
147	C200K	WDB2030426A695633	Mr. Mahesh Gupta - Grandhidham - Sec
148	C200K	WDB2030426A695634	X
149	C200K	WDB2030426A695635	X
150	C200K	WDB2030426A695636	X
151	C200K	WDB2030426A695637	X
152	C200K	WDB2030426A695638	X
153	C200K	WDB2030426A695639	X
154	C200K	WDB2030426A695640	X
155	C200K	WDB2030426A695641	X
156	C200K	WDB2030426A695642	Mr. Sita Ram Gupta - Jaipur - STS
157	C200K	WDB2030426A695643	X
158	C200K	WDB2030426A695644	X
159	C220CDI	WDB2030086A658310	X
160	C220CDI	WDB2030086A658312	X

161	C220CDI	WDB2030086A670097	
162	C220CDI	WDB2030086A670099	X
163	C220CDI	WDB2030086A670100	X
164	C220CDI	WDB2030086A670101	X
165	C220CDI	WDB2030086A670102	X
166	C220CDI	WDB2030086A670103	X
167	C220CDI	WDB2030086A670104	X
168	C220CDI	WDB2030086A670105	X
169	C220CDI	WDB2030086A670107	X
170	C220CDI	WDB2030086A670108	X
✓ 171	C220CDI	WDB2030086A695549	Mr. Yogendra Singh
172	C220CDI	WDB2030086A695550	X
173	C220CDI	WDB2030086A695551	X
174	C220CDI	WDB2030086A695552	X
175	C220CDI	WDB2030086A695553	X
176	C220CDI	WDB2030086A695554	X

J. Vansiq - Valsads

TPR sent Prashant Gamatex

Done 18-7-05

Sr. No.	Model	Chassis no.	Completion status
1	E200K	WDB2110426A516453	X
2	E200K	WDB2110426A516454	X
3	E200K	WDB2110426A516455	X
4	E200K	WDB2110426A516456	X
5	E200K	WDB2110426A516457	X
6	E200K	WDB2110426A516458	X
7	E200K	WDB2110426A516459	X
8	E200K	WDB2110426A516460	X
9	E200K	WDB2110426A516461	X
10	E200K	WDB2110426A516463	X
✓ 11	E200K	WDB2110426A516464	Mr. Pradeep Michokse - Ahmedabad - 597
12	E200K	WDB2110426A516465	X
13	E200K	WDB2110426A516467	X
14	E200K	WDB2110426A516468	X
15	E200K	WDB2110426A516469	X
16	E200K	WDB2110426A516470	X
17	E200K	WDB2110426A516471	X
18	E200K	WDB2110426A516472	X
19	E200K	WDB2110426A516473	X
20	E200K	WDB2110426A516474	X
21	E200K	WDB2110426A516475	X
22	E200K	WDB2110426A516476	X
23	E200K	WDB2110426A516477	X
24	E200K	WDB2110426A516478	X
25	E200K	WDB2110426A516479	X
26	E200K	WDB2110426A516480	X
27	E200K	WDB2110426A516481	X
28	E200K	WDB2110426A516482	X
29	E200K	WDB2110426A516483	X
30	E200K	WDB2110426A516484	X
31	E200K	WDB2110426A516485	X
32	E200K	WDB2110426A516486	X
33	E200K	WDB2110426A516487	X
34	E200K	WDB2110426A516488	X
35	E200K	WDB2110426A516489	X
36	E200K	WDB2110426A516490	X
37	E200K	WDB2110426A516491	X

Sr. No.	Model	Chassis no.	Completion status
38	E200K	WDB2110426A516492	X
39	E200K	WDB2110426A516493	X
40	E200K	WDB2110426A516494	X
41	E200K	WDB2110426A516495	X
42	E200K	WDB2110426A516496	X
43	E200K	WDB2110426A516497	X
44	E200K	WDB2110426A516498	X
45	E200K	WDB2110426A516499	X
46	E200K	WDB2110426A516500	X
47	E200K	WDB2110426A516501	X
48	E200K	WDB2110426A516502	X
49	E200K	WDB2110426A516503	X
50	E200K	WDB2110426A516504	X
51	E200K	WDB2110426A516505	X
52	E200K	WDB2110426A516506	X
53	E200K	WDB2110426A516507	X
54	E200K	WDB2110426A516508	X
55	E200K	WDB2110426A516509	X
56	E200K	WDB2110426A516510	X
57	E200K	WDB2110426A516511	X
58	E200K	WDB2110426A516512	X
59	E200K		
60	E200K	WDB2110426A543116	X
61	E200K	WDB2110426A543118	X
62	E200K	WDB2110426A543120	X
63	E200K	WDB2110426A543121	X
64	E200K	WDB2110426A543123	X
65	E200K	WDB2110426A543124	X
66	E200K	WDB2110426A543126	X
67	E200K	WDB2110426A543129	X
68	E200K	WDB2110426A543131	X
69	E200K	WDB2110426A543132	X
70	E200K	WDB2110426A543134	X
71	E200K	WDB2110426A543135	X
72	E200K	WDB2110426A543136	X
73	E200K	WDB2110426A543138	X
74	E200K	WDB2110426A543141	X

Sr. No.	Model	Chassis no.	Completion status
75	E200K	WDB2110426A543142	X
76	E200K	WDB2110426A543143	X
77	E240	WDB2110616A543145	X
78	E240	WDB2110616A543147	X
79	E240	WDB2110616A543149	X
80	E240	WDB2110616A543154	X
81	E240	WDB2110616A543155	X
82	E240	WDB2110616A543156	X
83	E240	WDB2110616A543166	X
84	E240	WDB2110616A543167	X
85	E240	WDB2110616A543168	Somani Fab. Pvt
86	E240	WDB2110616A543169	X
87	E240	WDB2110616A543170	X
88	E240	WDB2110616A543171	X
89	E240	WDB2110616A543172	X
90	E240	WDB2110616A543173	X
91	E240	WDB2110616A619129	X
92	E240	WDB2110616A619130	X
93	E240	WDB2110616A619131	X
94	E240	WDB2110616A619132	X
95	E240	WDB2110616A619133	X
96	E240	WDB2110616A619134	X
97	E240	WDB2110616A619136	X
98	E240	WDB2110616A619137	X
99	E240	WDB2110616A619138	X
100	E240	WDB2110616A619140	X
101	E240	WDB2110616A619141	X
102	E240	WDB2110616A619142	X
103	E240	WDB2110616A619143	X
104	E240	WDB2110616A619144	X
105	E240	WDB2110616A619145	X
106	E240	WDB2110616A619146	X
107	E240	WDB2110616A619147	X
108	E240	WDB2110616A619148	X
109	E240	WDB2110616A619149	X
110	E240	WDB2110616A619151	X
111	E240	WDB2110616A619153	X

ut d ⇒ Jaipur. ⇒ 466



Sr. No.	Model	Chassis no	Completion status
112	E240	WDB2110616A619154	X
113	E240	WDB2110616A619155	X
114	E240	WDB2110616A619156	X
115	E240	WDB2110616A619157	X
116	E240	WDB2110616A619158	X
117	E270CDI	WDB2110166A516393	X
118	E270CDI	WDB2110166A516394	X
119	E270CDI	WDB2110166A516395	X
120	E270CDI	WDB2110166A516396	X
121	E270CDI	WDB2110166A516397	X
122	E270CDI	WDB2110166A516398	X
123	E270CDI	WDB2110166A516399	X
124	E270CDI	WDB2110166A516400	X
125	E270CDI	WDB2110166A516401	X
126	E270CDI	WDB2110166A516402	X
127	E270CDI	WDB2110166A516403	X
128	E270CDI	WDB2110166A516404	X
129	E270CDI	WDB2110166A516405	X
130	E270CDI	WDB2110166A516406	X
131	E270CDI	WDB2110166A516407	X
132	E270CDI	WDB2110166A516408	X
133	E270CDI	WDB2110166A516409	X
134	E270CDI	WDB2110166A516410	X
135	E270CDI	WDB2110166A516411	X
136	E270CDI	WDB2110166A516412	X
137	E270CDI	WDB2110166A516413	X
138	E270CDI	WDB2110166A516414	X
139	E270CDI	WDB2110166A516415	X
140	E270CDI	WDB2110166A516416	X
141	E270CDI	WDB2110166A516417	X
142	E270CDI	WDB2110166A516418	X
143	E270CDI	WDB2110166A516419	X
144	E270CDI	WDB2110166A516420	X
145	E270CDI	WDB2110166A516421	X
146	E270CDI	WDB2110166A516422	X
147	E270CDI	WDB2110166A516423	X
148	E270CDI	WDB2110166A516424	X

Sr. No.	Model	Chassis no.	Completion status
149	E270CDI	WDB2110166A516426	X
150	E270CDI	WDB2110166A516427	X
151	E270CDI	WDB2110166A516428	X
152	E270CDI	WDB2110166A516429	X
153	E270CDI	WDB2110166A516430	X
154	E270CDI	WDB2110166A516431	X
155	E270CDI	WDB2110166A516432	X
156	E270CDI	WDB2110166A516433	X
157	E270CDI	WDB2110166A516434	X
158	E270CDI	WDB2110166A516435	X
159	E270CDI	WDB2110166A516436	X
160	E270CDI	WDB2110166A516437	X
161	E270CDI	WDB2110166A516438	X
162	E270CDI	WDB2110166A516439	X
163	E270CDI	WDB2110166A516440	X
164	E270CDI	WDB2110166A516441	X
165	E270CDI	WDB2110166A516442	X
166	E270CDI	WDB2110166A516443	X
167	E270CDI	WDB2110166A516444	X
168	E270CDI	WDB2110166A516445	X
169	E270CDI	WDB2110166A516447	X
170	E270CDI	WDB2110166A516448	X
171	E270CDI	WDB2110166A516449	X
172	E270CDI	WDB2110166A516450	X
173	E270CDI	WDB2110166A516451	X
174	E270CDI	WDB2110166A516452	X
175	E270CDI	WDB2110166A543085	X
176	E270CDI	WDB2110166A543086	X
177	E270CDI	WDB2110166A543087	X
178	E270CDI	WDB2110166A543089	X
179	E270CDI	WDB2110166A543090	X
180	E270CDI	WDB2110166A543091	X
181	E270CDI	WDB2110166A543092	X
182	E270CDI	WDB2110166A543093	X
183	E270CDI	WDB2110166A543095	X
184	E270CDI	WDB2110166A543097	X
185	E270CDI	WDB2110166A543098	X

Sr No	Model	Chassis no	Completion status
186	E270CDI	WDB2110166A543099	X
187	E270CDI	WDB2110166A543100	X
188	E270CDI	WDB2110166A543101	X
189	E270CDI	WDB2110166A543102	X
190	E270CDI	WDB2110166A543103	X
191	E270CDI	WDB2110166A543104	X
192	E270CDI	WDB2110166A543105	X
193	E270CDI	WDB2110166A543106	X
194	E270CDI	WDB2110166A543107	X
195	E270CDI	WDB2110166A543108	NR Wizard Finca
196	E270CDI	WDB2110166A543109	X
197	E270CDI	WDB2110166A543110	X
198	E270CDI	WDB2110166A543111	X
199	E270CDI	WDB2110166A543112	X
200	E270CDI	WDB2110166A543113	X
201	E270CDI	WDB2110166A543114	X
202	E270CDI	WDB2110166A596887	X
203	E270CDI	WDB2110166A596888	X
204	E270CDI	WDB2110166A596889	X
205	E270CDI	WDB2110166A596890	X
206	E270CDI	WDB2110166A596891	X
207	E270CDI	WDB2110166A596892	X
208	E270CDI	WDB2110166A596893	X
209	E270CDI	WDB2110166A596894	X
210	E270CDI	WDB2110166A596895	X
211	E270CDI	WDB2110166A596896	X
212	E270CDI	WDB2110166A596897	X
213	E270CDI	WDB2110166A596898	X
214	E270CDI	WDB2110166A596899	X
215	E270CDI	WDB2110166A596900	X
216	E270CDI	WDB2110166A596901	X
217	E270CDI	WDB2110166A596902	X
218	E270CDI	WDB2110166A596903	X
219	E270CDI	WDB2110166A596904	X
220	E270CDI	WDB2110166A596905	X
221	E270CDI	WDB2110166A596906	X
222	E270CDI	WDB2110166A596907	X

NR Wizard Finca Ltd. Vallabh Vidyanagar
done 7/32 V-562

Sr. No.	Model	Chassis no.	Completion status
223	E270CDI	WDB2110166A596908	K
224	E270CDI	WDB2110166A596909	K
225	E270CDI	WDB2110166A596910	K
226	E270CDI	WDB2110166A596911	K
227	E270CDI	WDB2110166A596912	K
228	E270CDI	WDB2110166A596913	K
229	E270CDI	WDB2110166A596914	K
230	E270CDI	WDB2110166A596915	K
231	E270CDI	WDB2110166A596916	K
232	E270CDI	WDB2110166A619039	K
233	E270CDI	WDB2110166A619040	K
234	E270CDI	WDB2110166A619041	K
235	E270CDI	WDB2110166A619042	K
236	E270CDI	WDB2110166A619043	K
237	E270CDI	WDB2110166A619044	K
238	E270CDI	WDB2110166A619045	K
239	E270CDI	WDB2110166A619046	K
240	E270CDI	WDB2110166A619047	K
241	E270CDI	WDB2110166A619048	K
242	E270CDI	WDB2110166A619049	K
243	E270CDI	WDB2110166A619050	K
244	E270CDI	WDB2110166A619051	K
245	E270CDI	WDB2110166A619052	K
246	E270CDI	WDB2110166A619053	K
247	E270CDI	WDB2110166A619054	K
248	E270CDI	WDB2110166A619055	K
249	E270CDI	WDB2110166A619056	K
250	E270CDI	WDB2110166A619057	K
251	E270CDI	WDB2110166A619058	K
252	E270CDI	WDB2110166A619059	K
253	E270CDI	WDB2110166A619060	K
254	E270CDI	WDB2110166A619061	K
255	E270CDI	WDB2110166A619062	K
256	E270CDI	WDB2110166A619063	K
257	E270CDI	WDB2110166A619064	K
258	E270CDI	WDB2110166A619065	K
259	E270CDI	WDB2110166A619066	K

Sr. No.	Model	Chassis no.	Completion status
260	E270CDI	WDB2110166A619067	K
261	E270CDI	WDB2110166A619068	K
262	E270CDI	WDB2110166A619069	X
263	E270CDI	WDB2110166A619070	K
264	E270CDI	WDB2110166A619071	Plastichemix Inds. vadodara
265	E270CDI	WDB2110166A619072	K
266	E270CDI	WDB2110166A619073	X
267	E270CDI	WDB2110166A619074	K
268	E270CDI	WDB2110166A619075	X
269	E270CDI	WDB2110166A619076	X
270	E270CDI	WDB2110166A619077	K
271	E270CDI	WDB2110166A619078	K
272	E270CDI	WDB2110166A619079	X
273	E270CDI	WDB2110166A619080	X
274	E270CDI	WDB2110166A619081	X
275	E270CDI	WDB2110166A619082	X
276	E270CDI	WDB2110166A619083	X
277	E270CDI	WDB2110166A619084	X
278	E270CDI	WDB2110166A619085	X
279	E270CDI	WDB2110166A619086	X
280	E270CDI	WDB2110166A619087	X
281	E270CDI	WDB2110166A619088	X
282	E270CDI	WDB2110166A619089	X
283	E270CDI	WDB2110166A619090	X
284	E270CDI	WDB2110166A619091	X
285	E270CDI	WDB2110166A619092	X
286	E270CDI	WDB2110166A619093	X
287	E270CDI	WDB2110166A619094	X
288	E270CDI	WDB2110166A619095	X
289	E270CDI	WDB2110166A619096	X
290	E270CDI	WDB2110166A619097	X
291	E270CDI	WDB2110166A619098	X
292	E270CDI	WDB2110166A619099	X
293	E270CDI	WDB2110166A619100	X
294	E270CDI	WDB2110166A619101	X
295	E270CDI	WDB2110166A619102	X
296	E270CDI	WDB2110166A619103	X

20-6-05 done 569

Sr. No.	Model	Chassis no.	Completion status
297	E270CDI	WDB2110166A619104	X
298	E270CDI	WDB2110166A619105	X
299	E270CDI	WDB2110166A619106	X
300	E270CDI	WDB2110166A619107	X
301	E270CDI	WDB2110166A619108	X
302	E270CDI	WDB2110166A619109	X
303	E270CDI	WDB2110166A619110	X
304	E270CDI	WDB2110166A619111	X
305	E270CDI	WDB2110166A619112	X
306	E270CDI	WDB2110166A619113	X
307	E270CDI	WDB2110166A619114	X
308	E270CDI	WDB2110166A619115	X
309	E270CDI	WDB2110166A619116	X
310	E270CDI	WDB2110166A619117	X
311	E270CDI	WDB2110166A619118	X
312	E270CDI	WDB2110166A619119	X
313	E270CDI	WDB2110166A619120	X
314	E270CDI	WDB2110166A619121	X
315	E270CDI	WDB2110166A619122	X
316	E270CDI	WDB2110166A619123	X
317	E270CDI	WDB2110166A619124	X
318	E270CDI	WDB2110166A619125	X
319	E270CDI	WDB2110166A619126	X Bharat Kalabhai Patel - Ahmedabad
320	E270CDI	WDB2110166A619127	X
321	E270CDI	WDB2110166A619128	X
322	E270CDI	WDB2110166A642479	X
323	E270CDI	WDB2110166A642480	X
324	E270CDI	WDB2110166A642481	X
325	E270CDI	WDB2110166A642482	X
326	E270CDI	WDB2110166A642483	X
327	E270CDI	WDB2110166A642484	X
328	E270CDI	WDB2110166A642485	X
329	E270CDI	WDB2110166A642486	X
330	E270CDI	WDB2110166A642487	X
331	E270CDI	WDB2110166A642488	X
332	E270CDI	WDB2110166A642489	X
333	E270CDI	WDB2110166A642490	X

25/5/05

Bharat Kalabhai Patel - Ahmedabad

Sr No	Model	Chassis no.	Completion status
334	E270CDI	WDB2110166A642491	K
335	E270CDI	WDB2110166A642492	X
336	E270CDI	WDB2110166A642493	K
337	E270CDI	WDB2110166A642494	X
338	E270CDI	WDB2110166A642495	K
339	E270CDI	WDB2110166A642496	K
340	E270CDI	WDB2110166A642497	K
341	E270CDI	WDB2110166A642498	K
342	E270CDI	WDB2110166A642499	Shree. Manjili Cowrites ser. P. Ud - New Delhi
343	E270CDI	WDB2110166A642500	K
344	E270CDI	WDB2110166A642501	K
345	E270CDI	WDB2110166A642502	K
346	E270CDI	WDB2110166A642503	K
347	E270CDI	WDB2110166A642504	K
348	E270CDI	WDB2110166A642505	K
349	E270CDI	WDB2110166A642506	X
350	E270CDI	WDB2110166A642507	X
351	E270CDI	WDB2110166A642508	X
352	E270CDI	WDB2110166A642509	X
353	E270CDI	WDB2110166A642510	K
354	E270CDI	WDB2110166A642511	K
355	E270CDI	WDB2110166A642512	K
356	E270CDI	WDB2110166A642513	X
357	E270CDI	WDB2110166A642514	X
358	E270CDI	WDB2110166A642515	K
359	E270CDI	WDB2110166A642516	K
360	E270CDI	WDB2110166A642517	K
361	E270CDI	WDB2110166A642518	K
362	E270CDI	WDB2110166A642519	X
363	E270CDI	WDB2110166A642520	X
364	E270CDI	WDB2110166A642521	X
365	E270CDI	WDB2110166A642522	K
366	E270CDI	WDB2110166A642523	K
367	E270CDI	WDB2110166A642524	K
368	E270CDI	WDB2110166A642525	K
369	E270CDI	WDB2110166A642526	K
370	E270CDI	WDB2110166A642527	K

-576

Sr. No.	Model	Chassis no.	Completion status
371	E270CDI	WDB2110166A642528	X
372	E270CDI	WDB2110166A642529	X
373	E270CDI	WDB2110166A642530	X
374	E270CDI	WDB2110166A642531	X
375	E270CDI	WDB2110166A642532	X
376	E270CDI	WDB2110166A642533	X
377	E270CDI	WDB2110166A642534	X
378	E270CDI	WDB2110166A642535	X
379	E270CDI	WDB2110166A642536	X
380	E270CDI	WDB2110166A642537	X
381	E270CDI	WDB2110166A642538	X

Sr. No.	Model	Chassis no.	Completion status
1	S350L	WDB2201676A415631	X
2	S350L	WDB2201676A415632	K
3	S350L	WDB2201676A415633	X
4	S350L	WDB2201676A415634	K
5	S350L	WDB2201676A415635	X
6	S350L	WDB2201676A415636	X
7	S350L	WDB2201676A421571	K
8	S350L	WDB2201676A421572	X
9	S350L	WDB2201676A421575	X
10	S350L	WDB2201676A421576	X
11	S350L	WDB2201676A421577	X
12	S350L	WDB2201676A421578	X
13	S350L	WDB2201676A421579	X
14	S350L	WDB2201676A421581	X
15	S350L	WDB2201676A421582	X
16	S350L	WDB2201676A427861	K
17	S350L	WDB2201676A427863	K
18	S350L	WDB2201676A427866	X
19	S350L	WDB2201676A427867	X
20	S350L	WDB2201676A427871	X
21	S350L	WDB2201676A427872	X
22	S350L	WDB2201676A432751	X
23	S350L	WDB2201676A432752	K
24	S350L	WDB2201676A432753	X
25	S350L	WDB2201676A432756	X
26	S350L	WDB2201676A432758	X
27	S350L	WDB2201676A432759	K
28	S350L	WDB2201676A432762	X
29	S350L	WDB2201676A437412	K
30	S350L	WDB2201676A437413	K
31	S350L	WDB2201676A437414	X
32	S350L	WDB2201676A437415	X
33	S350L	WDB2201676A437416	X
34	S350L	WDB2201676A437417	K
35	S350L	WDB2201676A437418	X

Sr. No.	Model	Chassis No.	Completion Status
36	S350L	WDB2201676A437419	X
37	S350L	WDB2201676A437420	X
38	S350L	WDB2201676A437421	X
39	S350L	WDB2201676A437422	X
40	S350L	WDB2201676A437426	X
41	S350L	WDB2201676A437427	X
42	S350L	WDB2201676A437428	X
43	S350L	WDB2201676A442411	X
44	S350L	WDB2201676A442412	X
45	S350L	WDB2201676A442413	X
46	S350L	WDB2201676A442414	X
47	S350L	WDB2201676A442415	X
48	S350L	WDB2201676A442416	X

Handwritten notes:
Ashish Salvi
M. N. N. on P
Attached with earlier
related
Circular
16/03

Devendra Thakur
03/15/2005 04:05 PM

To: m3warranty@ddmmp.com, m3bws@ddmmp.com, warranty@autohangarindia.com, ryanf@autohangarindia.com, hrishikesh@autohangarindia.com, smmbblr@dishnetdsl.net, smmbblr@eth.net, 121taipan@indiatimes.com, servicechd@taipanindia.com, servicetaipan@taipanindia.com, warranty@patelautoindia.com, pas_warranty@indiatimes.com, cama_service@indiatimes.com, cama@satyam.net.in, tntwnty@vsnl.net, tandt@ndf.vsnl.net.in, transwarr@indiatimes.com, transwork@vsnl.net, smmbmdswty@dishnetdsl.net, ikwarranty@sify.com, benzwarranty.tvscbe@tvssons.com, madplhyd@eth.net, adishwar_auto@indiatimes.com, rajasreemotors@vsnl.net, rajasree@spectrum.net.in, sanghiwarranty@sanghimotor.com
cc: Ashish Salvi/185/DCAG/DCX@WK-COOP, Stephen Lobo/185/DCAG/DCX@WK-APAC, Lino Marques/185/DCAG/DCX@WK-APAC, tekayremeshan@eth.net, michaelhelfrich@vsnl.net, Pandurang Choudhari/185/DCAG/DCX@WK-COOP, Presanna Kumar/185/DCAG/DCX@WK-COOP
Subject: Customer Satisfaction Campaign - Replace ATF adaptor plug

Kind Attention - Workshop Managers

Dear All,

Please refer our earlier information on Customer Satisfaction Campaign dated 3rd March 2005 - Replace ATF Adaptor Plug (Accounting No. 27 270 01).

Please mark a blue paint spot on transmission as shown in attached photograph after replacing the ATF plug adaptor.

This is to avoid repetition of Campaign action.

Kindly ensure that your concerned staff is well aware of the above.

with best regards
DaimlerChrysler India Private Limited

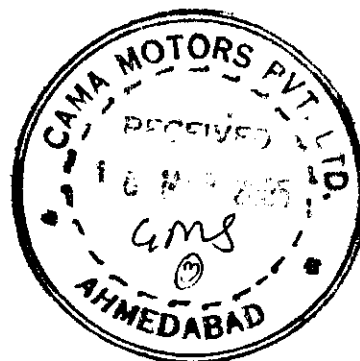
Ashish Salvi
Divisional Manager
Field Service

Devendra Thakur
Sr. Manager
Customer Service



ATF - Photo.doc

Handwritten note:
Recd
on 16/03/05
at 14:25
2

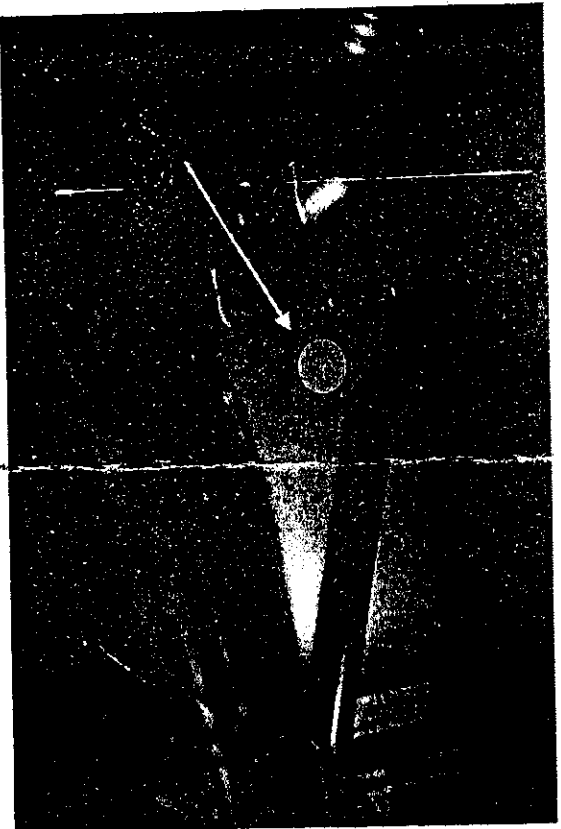
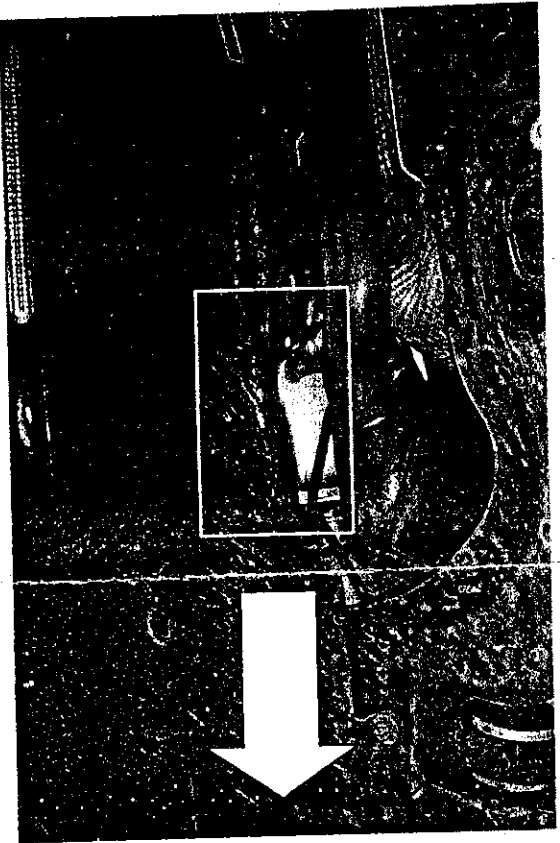


DAIMLERCHRYSLER

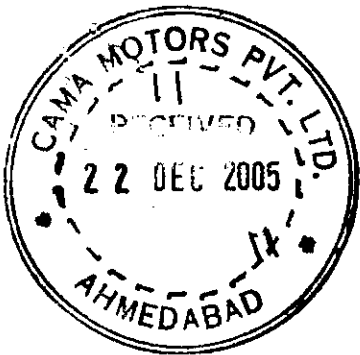
DaimlerChrysler India
Aftersales

212

Customer Satisfaction Campaign (Replace ATF adaptor plug) dated 3rd March 2005 - Accounting No. 27 270 01



➤ Please mark a blue paint spot on transmission as shown in above photograph after replacing the ATF plug adaptor.
This is to avoid repetition of Campaign action.



DAIMLERCHRYSLER

DaimlerChrysler
India Private Limited

Pune, December 20, 2005

Workshop Incharge
DC India Authorised Workshops

Suppliment to Customer Satisfaction Campaign - Replace ATF adaptor Plug
(Accounting No. 2727001)

Dear All,

Kindly refer our earlier documents dated 3rd March 2005 related to the above mentioned service Measures and note the following changes / amendments in the documentation.

- List of additional vehicles (Annexure - I) to be attended under this Campaign is enclosed herewith. Please update your records accordingly.
- The completion date of this Campaign has been extended up to 30th June 2007.
- Please note that approx. 0.2 litres of Automatic Transmission Fluid (Part No. A 001 989 45 03) is sufficient for 1 vehicle, which can be claimed. When ordering Automatic Transmission Fluid, please make sure to state the part no. index.

Kindly ensure that your concerned staff is well aware of the above. For any queries you may have related to this information, please contact the right undersigned or Mr. Devendra Thakur.

Please acknowledge receipt of this letter.

With best regards,
DaimlerChrysler India Private Limited

Dtae
D. Chandavarkar
Director
After-Sales

Ashish Salvi
Ashish Salvi
Dy. General Manager
Field Service

Copies to - DCIPL Service Representatives} for information

Encl. - Additional Vehicle list (Annexure I)

*total 2 cars
in S.S.C. & both
tracked on VDC
on 23/12/2005*

*Alide
Prakashan
meow
Anjan Hood
done
28/12*

Board of Management
Klaus-Peter Arnold, Piyush Arora, Hans-Michael Huber (Speaker),
Ravi Gogia, Suhas Kadlaskar, Augustus Mallier, Sanjiv Sahajwala

A Company of the DaimlerChrysler Group

Registered office, Corporate Office & Works: Dr
Sector 15 A, Chikhali
Pimpri, Pune 411 018 (India)
Phone: (+91) 20 27505000
www.mercedes-benz.co.in

*sent
and 28/12
at 3-00
28/12*

Handwritten signature

DAIMLERCHRYSLER

(Annexure I)

DaimlerChrysler India

CSC - Replace ATF adaptor Plug(Accounting No. 2727001)

Aftersales

List of additional vehicles

Sr. No.	Affected Ch. Nos.	Location	Completion status
1	WDB2110062A607995	Ahmedabad - Royale Manor Hotels & Inds. Ltd.	
2	WDB2200252A430115	Chandigarh	
3	WDB2200252A430547	Chennai	
4	WDB2201672A428615	Chennai	
5	WDB2200252A422992	Chennai	
6	WDB1714422F022264	Dealer unknown - Hoshi Sain	
7	WDB2110062A562174	Dealer unknown	
8	WDB2110426A543127	Dealer unknown	
9	WDB2201672A425099	Dealer unknown	
10	WDB2201676A427866	Dealer unknown	
11	WDB2201676A442415	Dealer unknown	
12	WDB2201676A446443	Dealer unknown	
13	WDB2201676A446445	Dealer unknown	
14	WDB2201676A446446	Dealer unknown	
15	WDC2030082R150092	Dealer unknown	
16	WDC2030422R155813	Dealer unknown	
17	WDB1714422F018812	Dealer unknown	
18	WDB2110616A543152	Dealer unknown	
19	WDB2030426A658385	Delhi	
20	WDB2030426A682553	Delhi	
21	WDB2110062A562990	Delhi	
22	WDB2110616A543163	Delhi	
23	WDB2201676A449967	Delhi	
24	WDB2201672A431741	Delhi	
25	WDB2030426A658356	Hyderabad	
26	WDB2030426A658357	Hyderabad	
27	WDB2030086A658309	Kolkata	
28	WDB2030426A658355	Kolkata	
29	WDB2201676A437425	Kolkata	
30	WDB2030086A670098	Mumbai	
31	WDB2030426A645055	Mumbai	
32	WDB2030426A645066	Mumbai	
33	WDB2030426A658343	Mumbai	
34	WDB2030426A658354	Mumbai	
35	WDB2030426A658363	Mumbai	
36	WDB2030426A658370	Mumbai	
37	WDB2030426A670133	Mumbai	
38	WDB2030426A682560	Mumbai	
39	WDB2110162A641169	Mumbai	
40	WDB2110166A543088	Mumbai	
41	WDB2110616A543158	Mumbai	
42	WDB2110616A543159	Mumbai	
43	WDB2110616A543161	Mumbai	
44	WDB2110616A619135	Mumbai	
45	WDB2201672A429659	Mumbai	
46	WDB2201676A421573	Mumbai	
47	WDB2201676A427862	Mumbai	
48	WDB2201676A427869	Mumbai	
49	WDB2201676A427870	Mumbai	
50	WDB2201676A432754	Mumbai	

DAIMLERCHRYSLER

(Annexure I)

DaimlerChrysler India
Aftersales

CSC – Replace ATF adaptor Plug(Accounting No. 2727001)
List of additional vehicles

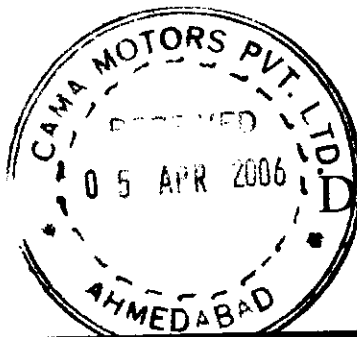
Sr. No.	Affected Ch. Nos.	Location	Completion status
51	WDB2201676A446444	Mumbai	
52	WDB2201676A449951	Mumbai	
53	WDB1714422F024775	Mumbai	
54	WDB2110166A543094	Mumbai	
55	WDB2110426A543128	Mumbai	
56	WDB2110616A543150	Mumbai	
57	WDB2110616A543165	Mumbai	
58	WDC1631131A536802	Mumbai	

Service Measure - Replace ATF Adaptor Plug - Model W 203/ W 211 & W 220

Sr. No.	Chassi No.	Customer Name	Completion Status	Claim No.	Area
1	2030426A658380	Symphony Comfort Systems Ltd.			G
2	2030426A658400	Gopal Mehrotra			R
3	2030426A682539	Naresh Agarwal	19/5/05	50959	G
4	2030426A682572	Optima Diamond Tools Pvt. Ltd.			G
5	2030426A695633	Mahesh Gupta			G
6	2030426A695642	Sita Ram Sopra	4/6/2005	50979	R
7	2030086A695549	Yogendra Singh J. Vansia			G
8	2110426A516464	Pradeep M. Choksi			G
9	2110616A543168	Somani Fab. Pvt. Ltd.			R
10	2110166A543108	Wizard Fincap Ltd.			G
11	2110166A619070	Plastichemix Inds.	22/6/05	50986	G
12	2110166A619126	Bharat Kalabhai Patel	25/5/05	50969	G
13	2110166A642499	Maruti Courier Services P. Ltd.	7/7/2005	51003	G
14	2030426A658350	Flexican Bellows	31/12/05	51157	G
15	2110426A703628	Ramesh Jatia	29/12/05	51159	G
16	2110616A105298	S.N. Kapoor	31/12/05	51162	R

	= Completed Service Measures
--	------------------------------

	= Vehicles attended last month
--	--------------------------------



DAIMLERCHRYSLER

Service Information

Distribution: Dealers + Service Centres
DCIPL Field Service Rep.

x
x

31st March 2006

S. I. No. - IND 27/003

Passenger Car

Humming, droning and/or jolting during gentle acceleration at engine speeds between 1200 rpm and 2500 rpm

Transmission 722.6 in MODEL 203 up to 30.9.03 with ENGINE 111, 112, 271, 611, 612, 990, 646

Transmission 722.6 in MODEL 209 up to 30.9.03 with ENGINE 112, 113, 271, 612

Transmission 722.6 in MODEL 211 up to 30.9.03 with ENGINE 113, 271, 628, 647, 648

Kind Attention - Workshop Managers

Dear All,

Please refer the below mentioned diagnosis procedure for the complaint of Humming, droning and/or jolting during gentle acceleration at engine speeds between 1200 rpm and 2500 rpm for vehicles with 722.6 transmission.

[Redacted text]

↑↑↑

To be noted important instruction

Diagnosis Method

Modification notes

16.2.06	Revised repair procedure for a test result up to 100 mg/l glycol in the automatic transmission fluid	Step 6	Page 5
---------	--	--------	--------

Operation no. of operation texts or standard texts and flat rates

Category	Op. no.	Operation text
P	024609	Perform glycol test

D Rg
7-4-06
[Signature]

Dkaurj
Pl. go through, educate all your concerned staff / Technicians and adhere guideline / instruction mentioned here above strictly. Pl. confirm your action

Contd/2 ...

[Signature]
2103

Damage code	Cause	Remedy	
	<ul style="list-style-type: none"> - Faulty transmission control unit - Torque converter lockup clutch not adapted - Dirty torque converter lockup clutch disks - Glycol in transmission oil <p>Humming/droning noises can occur in the speed range between 1200-2500 rpm. In addition the vehicle can jolt in this speed range. The complaint can be reproduced at any time.</p>	<p>Always work through steps 1 to 5 in sequence.</p> <p>1 The complaint is not longer comprehensible after disengaging the torque converter lockup clutch on an experimental basis. Deactivate torque converter lockup clutch for one ignition sequence using the Diagnosis Assistance System (DAS).</p>	
		<p>1 Selection in Diagnosis Assistance System:</p> <p style="text-align: center;">↓</p> <ul style="list-style-type: none"> - "Control units" - "Drive" - "Electronic transmission control" - "Diagnosis routine" <p>The torque converter lockup clutch can now be deactivated in transmission mode "C" or "W".</p>	
54 553 90		<p>1 Only on model 211 up to vehicle ident. number 089500:</p> <p style="text-align: center;">↓</p> <p>2 Check transmission control unit.</p>	AF27.10-P-9100AG
27 287 H4		3 Carry out adaptation of the torque converter lockup clutch.	AF27.10-P-1300-01A
14 370 38		4 Check the mounting of the diesel particulate filter, if necessary tighten to the specified tightening torque	
27 431 04		<p>If the complaint still persists and if the following basic conditions apply:</p> <ul style="list-style-type: none"> - The vehicle was produced before 09/03 - Mileage more than 10 000 km - A Valeo radiator is installed in the vehicle (crimping must be visible, see picture) <p style="text-align: center;">↓</p> <p>1 Wear safety glasses during the glycol test.</p> <p>It is essential to adhere to the timing specifications so that the measurement result is not invalidated. The glycol test is durable for 18 months at a storage temperature of 15-25 °C. The glycol test is designed for 30 tests.</p> <p>5 Perform glycol test</p>	AF27.10-P-1300-02A
		6 Carry out the repair procedure corresponding to the test result: ↓	

Contd/3 ...

Damage code	Cause	Remedy	
→ 27 431 04	<p>1 Use damage code corresponding to the result of the fault diagnosis..</p>	<ul style="list-style-type: none"> - up to 100 mg/l glycol in the automatic transmission fluid: Carry out procedure as per diagnosis tree for torque converter lockup clutch (KÜB). - as of 100 mg/l: Replace radiator; flush converter, lines and transmission. <p>Flush out automatic transmission and converter</p>	<p>Page 5</p> <p>AR27.55-P-0100A</p>
		<p>1 If the complaint is still comprehensible after the flushing routine, only the torque converter also has to be replaced. Before installation, the new radiator must be marked with a white color coding (picture 2).</p>	

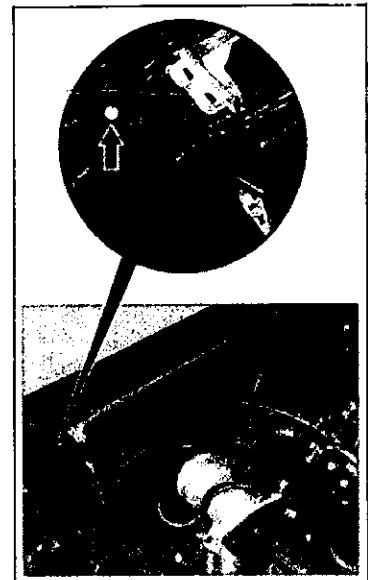
Picture 1: Crimping



P20.20-2284-11

Fig. 2

Arrow White color dot on the waterbox of the transmission oil cooler



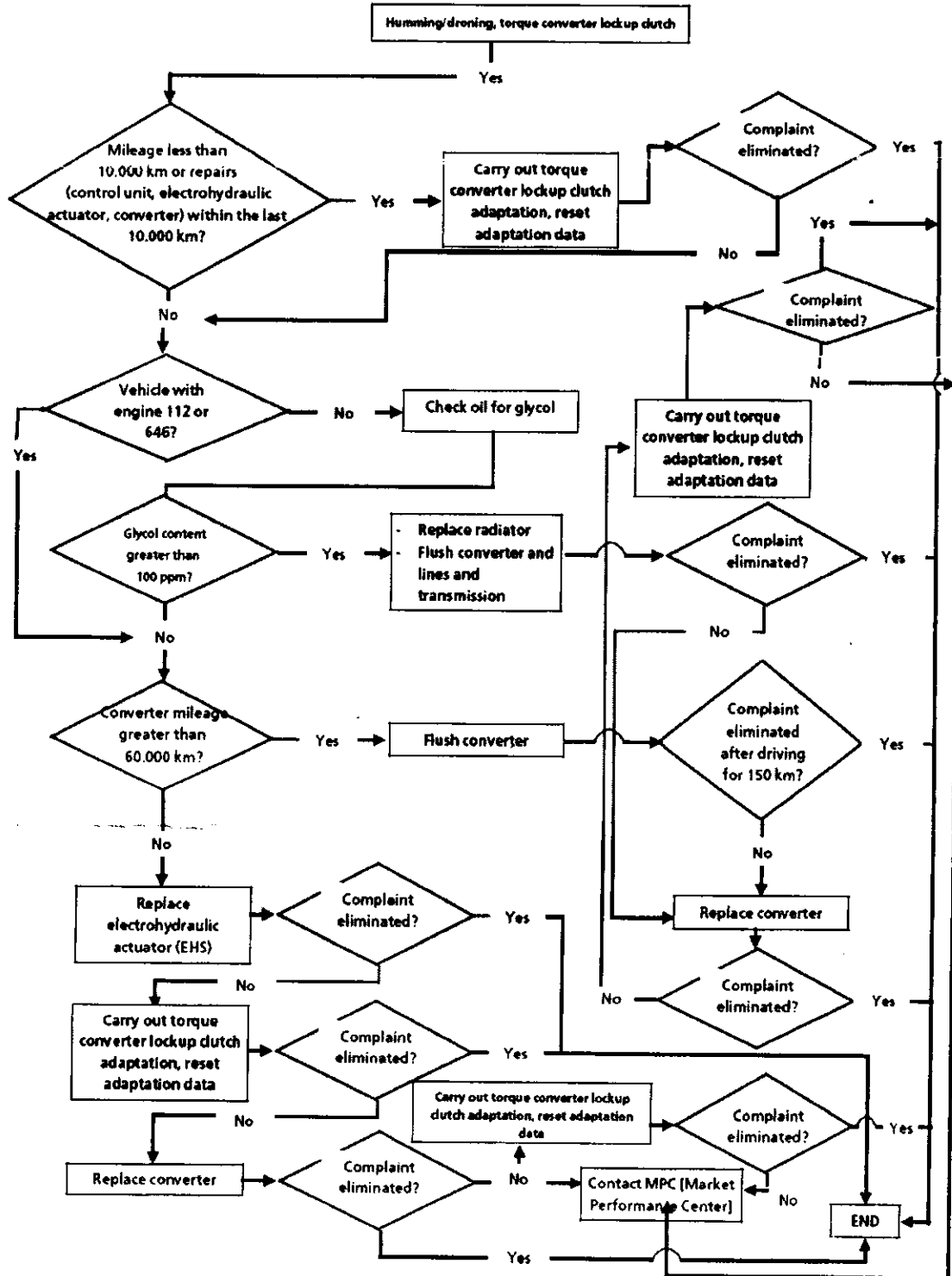
P27.55-2953-03

Contd/4 ...

Parts ordering notes

Part no.	Designation	Quantity
A 000 989 00 09	Glycol test 1 (only use together with test 2)	1
A 000 989 00 14	Glycol Test 2 (only use together with Test 1)	1

AF27.10-P-1300-03A	Diagnosis tree for torque converter lockup clutch (KÜB)		
--------------------	---	--	--



Contd/5 ...

: 5 :

Kindly ensure that your concerned staff is well aware of the above.

In case of any queries, please feel free to contact us.

With best regards,
DaimlerChrysler India Private Limited



Ashish Salvi
Dy. General Manager
Field Service



Devendra Thakur
Sr. Manager
Customer service

Copy to - Mr. D. Chandavarkar
DCIPL Workshop
DC India Service Representatives.
DC India Training Department

DAIMLERCHRYSLER

DaimlerChrysler
India Private Limited

Pune, February 20, 2007

All Workshop Incharge
DC India dealerships / ASC

Service measure during next workshop stay
Check software release of transmission control unit, install new software if necessary
Model 164, 211, 221, 230

Dear All,

Please refer to the attached affected vehicle list. On these vehicles reporting your workshop, increased wear of the torque converter lock-up clutch may occur in the long term due to the specified friction power being set too high. In order to avoid consequential damage, please check the software release of the transmission control unit of these vehicles and, if necessary, install a new software and carry out an adaptation of the transmission control unit. This work is to be carried out during the vehicles' next visit to the workshop. Please refer to the attached work instructions for the procedures.

Parts required: None

For operation texts and flat rates, please refer to the attached work instructions.

Damage Code: 027950318

Cost settlement:

A warranty/goodwill claim for the costs of material and labor can be submitted quoting **accounting number 2795031**.

Completion deadline

This field campaign should be completed by **31st December 2008**.

Please advise your concerned staff accordingly and ensure that each vehicle mentioned in the attached list visiting your workshop is attended for this action.

..... 2

: 2 :

Please acknowledge receipt of this letter and feel free to revert to us for any queries.

Thanking you

With best regards,
DaimlerChrysler India Private Limited



D. Chandavarkar
Director
After-Sales



Ashish Salvi
Dy. General Manager
Field Service

Copy to - DCIPL Service Representatives } for close follow up with the workshops

Encl. - Work Instructions
Affected vehicle list

Registered office, Corporate Office & Works :
Sector 15-A, Chikhali
Pimpri, Pune 411 018 (India)
Phone: (+91) 20 27505210
www.mercedes-benz.co.in

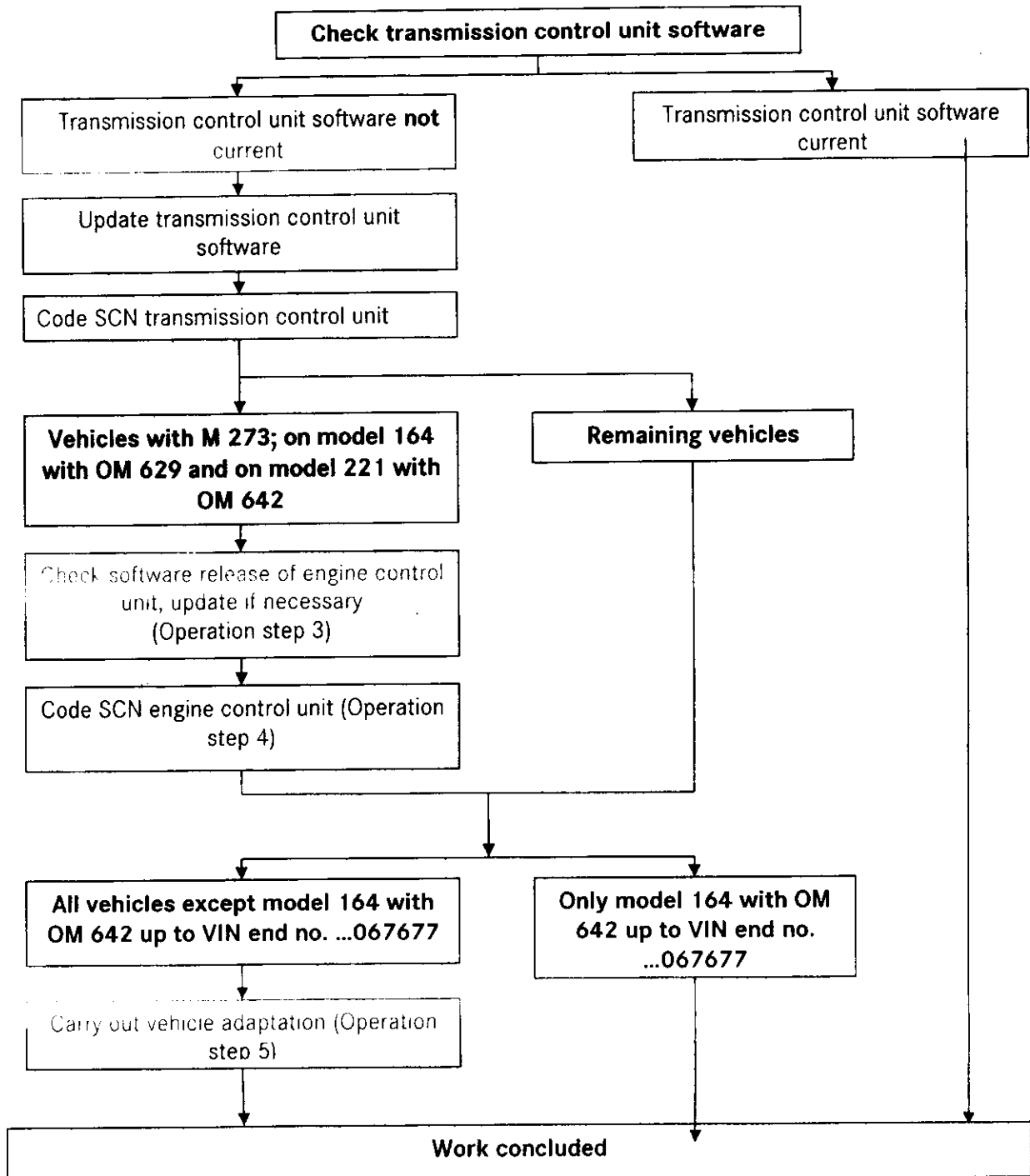
WORK DESCRIPTION FOR SERVICE MEASURE

Code: 0606P27A69

Version: 2.2

Check software release of transmission control unit, install new software if necessary
Model 164; 203; 209; 211; 219; 221; 230; 251 with M 273; OM 642; OM 629 and code 427

i Code 427 corresponds to 7-speed automatic transmission (722.9)



Brief Instructions

Modification notes:

- i** • Operation item for transmission adaptation drive added

Check/Test Procedure

- i** • Use **DAS version 9/2006 and add-on 0624** or use higher DAS version.
 - Please make sure to follow the steps exactly as described in DAS.
 - Use battery charger to ensure sufficient power supply from vehicle **on-board electrical system battery** (greater than 12.5 V).

1. Connect DAS.
2. Check software in transmission control unit.
 - i** To do so, select menu item: "Control units initial startup".
 - a. New software available: Carry out **work procedure**.
 - b. No new software available: **End measure**

Work Procedure

1. Update software in transmission control unit.
 - i** To do so, continue with menu item: "Control units initial startup".
2. Code SCN transmission control unit.
 - i** To do so, continue with menu item: "Control units initial startup".
- i** Carry out steps 3 and 4 on all vehicles with M 273; model 164 with OM 629 and model 221 with OM 642
3. Check software in engine control unit, update if necessary.
 - i** Select "Control unit adaptations".
- i** Coding of SCN engine control unit must be carried out, even if software in engine control unit was not updated.
4. Code SCN engine control unit.
 - i** For this, select menu item: "Initial startup".

i Operation step 5 is valid for all vehicles except model 164 with OM 642 up to VIN end no. ...067677.

5. Carry out transmission adaptation:

i To do so, select menu item: "Adaptation".

i In addition to the DAS specifications, note the following:

- **The adaptation up to fourth gear must be carried out two times.**
- Select transmission mode "S".
- The respective adaptation windows 1/2; 2/3 and 3/4 are to be selected separately in DAS.
- Enter first gear manually and accelerate vehicle slightly.
- In the respective adaptation windows (DAS), operate the shift mechanism manually up to **fourth gear**.
- Let vehicle coast down each time.

6. Disconnect DAS.

Operation Text and Flat Rate

Operation no.	Operation text	Flat rate	Accounting no.
02552301	• Check transmission control unit software	0.1 h	27 950 31
02552401	• Install transmission control unit software	0.2 h	27 950 31
02476201	• Disconnect/connect Diagnosis Assistance System (DAS)	0.1 h	27 950 31
02552801	• Check engine control unit software	0.1 h	27 950 31
02552901	• Install engine control unit software	0.2 h	27 950 31
02538201*	• Code control unit (with DAS connected)	0.1 h x 2	27 950 31
02505801	• Connect battery charger (with DAS connected)	0.1 h	27 950 31
27104701	• Carry out adaptation (after repair)	0.5 h	27 950 31

* ~ This operation item is to be used one time each for coding of engine and transmission control unit

DaimlerChrysler AG
Global Service & Parts

Sr. No.	Chassis No.	Comm. No.	Model	CBU / CKD	Location	Completion status
1	WDD2211712A052086	682510053	S 500	CBU	AHMEDABAD - <i>Akshay Punshotam</i>	
2	WDB2110206A908451	582591497	E 280 CDI	CKD	AHMEDABAD - <i>Rajnikant Patil</i>	
3	WDB2110206A908455	582591501	E 280 CDI	CKD	AHMEDABAD - <i>Balvishw Kotak</i>	
4	WDB2110206A908462	582591508	E 280 CDI	CKD	AHMEDABAD - <i>Rajeshwari S. Patil</i>	
5	WDB2110206A942646	682590228	E 280 CDI	CKD	AHMEDABAD - <i>ABC Bhandari</i>	
6	WDD2211712A036522	682510003	S 500	CBU	BANGALORE	
7	WDD2211712A056194	682510063	S 500	CBU	BANGALORE	
8	WDB2110206A850080	582591060	E 280 CDI	CKD	BANGALORE	
9	WDB2110206A850082	582591062	E 280 CDI	CKD	BANGALORE	
10	WDB2110206A850091	582591071	E 280 CDI	CKD	BANGALORE	
11	WDB2110206A850095	582591075	E 280 CDI	CKD	BANGALORE	
12	WDB2110206A850111	582591091	E 280 CDI	CKD	BANGALORE	
13	WDB2110206A850121	582591101	E 280 CDI	CKD	BANGALORE	
14	WDB2110206A908433	582591479	E 280 CDI	CKD	BANGALORE	
15	WDB2110206A908435	582591481	E 280 CDI	CKD	BANGALORE	
16	WDB2110206A908440	582591486	E 280 CDI	CKD	BANGALORE	
17	WDB2110206A908441	582591487	E 280 CDI	CKD	BANGALORE	
18	WDB2110206A908459	582591505	E 280 CDI	CKD	BANGALORE	
19	WDB2110206A908465	582591511	E 280 CDI	CKD	BANGALORE	
20	WDB2110206A920115	582591651	E 280 CDI	CKD	BANGALORE	
21	WDB2110206A920123	582591659	E 280 CDI	CKD	BANGALORE	
22	WDB2110206A920145	582591681	E 280 CDI	CKD	BANGALORE	
23	WDB2110206A920155	582591691	E 280 CDI	CKD	BANGALORE	
24	WDB2110206A920161	582591697	E 280 CDI	CKD	BANGALORE	
25	WDB2110206A920167	582591703	E 280 CDI	CKD	BANGALORE	
26	WDB2110206A920179	582591715	E 280 CDI	CKD	BANGALORE	
27	WDB2110206A920182	582591718	E 280 CDI	CKD	BANGALORE	
28	WDB2110206A933309	682590045	E 280 CDI	CKD	BANGALORE	
29	WDB2110206A933312	682590048	E 280 CDI	CKD	BANGALORE	
30	WDB2110206A933323	682590059	E 280 CDI	CKD	BANGALORE	
31	WDB2110206A933333	682590069	E 280 CDI	CKD	BANGALORE	
32	WDB2110206A942627	682590209	E 280 CDI	CKD	BANGALORE	
33	WDB2110206A942650	682590232	E 280 CDI	CKD	BANGALORE	
34	WDB2110206A942674	682590256	E 280 CDI	CKD	BANGALORE	
35	WDB2110206A942684	682590266	E 280 CDI	CKD	BANGALORE	
36	WDB2110206A942701	682590283	E 280 CDI	CKD	BANGALORE	
37	WDB2110206A850069	582591049	E 280 CDI	CKD	CHANDIGARH	
38	WDB2110206A850076	582591056	E 280 CDI	CKD	CHANDIGARH	
39	WDB2110206A850115	582591095	E 280 CDI	CKD	CHANDIGARH	
40	WDB2110206A908438	582591484	E 280 CDI	CKD	CHANDIGARH	
41	WDB2110206A908458	582591504	E 280 CDI	CKD	CHANDIGARH	
42	WDB2110206A920133	582591669	E 280 CDI	CKD	CHANDIGARH	
43	WDB2110206A920138	582591674	E 280 CDI	CKD	CHANDIGARH	
44	WDB2110206A920157	582591693	E 280 CDI	CKD	CHANDIGARH	
45	WDB2110206A920162	582591698	E 280 CDI	CKD	CHANDIGARH	
46	WDB2110206A920163	582591699	E 280 CDI	CKD	CHANDIGARH	
47	WDB2110206A920188	582591724	E 280 CDI	CKD	CHANDIGARH	
48	WDB2110206A920194	582591730	E 280 CDI	CKD	CHANDIGARH	
49	WDB2110206A920197	582591733	E 280 CDI	CKD	CHANDIGARH	
50	WDB2110206A933317	682590053	E 280 CDI	CKD	CHANDIGARH	
51	WDB2110206A933319	682590055	E 280 CDI	CKD	CHANDIGARH	

Sr. No.	Chassis No.	Comm. No.	Model	CBU / CKD	Location	Completion status
52	WDB2110206A933326	682590062	E 280 CDI	CKD	CHANDIGARH	
53	WDB2110206A942632	682590214	E 280 CDI	CKD	CHANDIGARH	
54	WDB2110206A942643	682590225	E 280 CDI	CKD	CHANDIGARH	
55	WDB2110206A942659	682590241	E 280 CDI	CKD	CHANDIGARH	
56	WDB2110206A942660	682590242	E 280 CDI	CKD	CHANDIGARH	
57	WDB2110206A942688	682590270	E 280 CDI	CKD	CHANDIGARH	
58	WDB2110202A846179	582510016	E 280 CDI	CBU	CHENNAI	
59	WDB2110206A850065	582591045	E 280 CDI	CKD	CHENNAI	
60	WDB2110206A850081	582591061	E 280 CDI	CKD	CHENNAI	
61	WDB2110206A850117	582591097	E 280 CDI	CKD	CHENNAI	
62	WDB2110206A908428	582591474	E 280 CDI	CKD	CHENNAI	
63	WDB2110206A908429	582591475	E 280 CDI	CKD	CHENNAI	
64	WDB2110206A908449	582591495	E 280 CDI	CKD	CHENNAI	
65	WDB2110206A908454	582591500	E 280 CDI	CKD	CHENNAI	
66	WDB2110206A908468	582591514	E 280 CDI	CKD	CHENNAI	
67	WDB2110206A920142	582591678	E 280 CDI	CKD	CHENNAI	
68	WDB2110206A920149	582591685	E 280 CDI	CKD	CHENNAI	
69	WDB2110206A920196	582591732	E 280 CDI	CKD	CHENNAI	
70	WDB2110206A933320	682590056	E 280 CDI	CKD	CHENNAI	
71	WDB2110206A933321	682590057	E 280 CDI	CKD	CHENNAI	
72	WDB2110206A942653	682590235	E 280 CDI	CKD	CHENNAI	
73	WDB2110206A942675	682590257	E 280 CDI	CKD	CHENNAI	
74	WDB2110206A942690	682590272	E 280 CDI	CKD	CHENNAI	
75	WDB2110206A942706	682590288	E 280 CDI	CKD	CHENNAI	
76	WDB2110206A850070	582591050	E 280 CDI	CKD	COCHIN	
77	WDB2110206A850075	582591055	E 280 CDI	CKD	COCHIN	
78	WDB2110206A850120	582591100	E 280 CDI	CKD	COCHIN	
79	WDB2110206A908436	582591482	E 280 CDI	CKD	COCHIN	
80	WDB2110206A908444	582591490	E 280 CDI	CKD	COCHIN	
81	WDB2110206A908447	582591493	E 280 CDI	CKD	COCHIN	
82	WDB2110206A908448	582591494	E 280 CDI	CKD	COCHIN	
83	WDB2110206A908456	582591502	E 280 CDI	CKD	COCHIN	
84	WDB2110206A908464	582591510	E 280 CDI	CKD	COCHIN	
85	WDB2110206A920127	582591663	E 280 CDI	CKD	COCHIN	
86	WDB2110206A920135	582591671	E 280 CDI	CKD	COCHIN	
87	WDB2110206A920147	582591683	E 280 CDI	CKD	COCHIN	
88	WDB2110206A920170	582591706	E 280 CDI	CKD	COCHIN	
89	WDB2110206A920183	582591719	E 280 CDI	CKD	COCHIN	
90	WDB2110206A920198	582591734	E 280 CDI	CKD	COCHIN	
91	WDB2110206A933325	682590061	E 280 CDI	CKD	COCHIN	
92	WDB2110206A942625	682590207	E 280 CDI	CKD	COCHIN	
93	WDB2110206A942649	682590231	E 280 CDI	CKD	COCHIN	
94	WDB2110206A942656	682590238	E 280 CDI	CKD	COCHIN	
95	WDB2110206A942657	682590239	E 280 CDI	CKD	COCHIN	
96	WDB2110206A942669	682590251	E 280 CDI	CKD	COCHIN	
97	WDB2110206A942682	682590264	E 280 CDI	CKD	COCHIN	
98	WDB2110206A942685	682590267	E 280 CDI	CKD	COCHIN	
99	WDB2110206A942700	682590282	E 280 CDI	CKD	COCHIN	
100	WDB2110206A942704	682590286	E 280 CDI	CKD	COCHIN	
101	WDB2110206A850094	582591074	E 280 CDI	CKD	COIMBATORE	
102	WDB2110206A850122	582591102	E 280 CDI	CKD	COIMBATORE	

Sr. No.	Chassis No.	Comm. No.	Model	CBU / CKD	Location	Completion status
103	WDB2110206A908431	582591477	E 280 CDI	CKD	COIMBATORE	
104	WDB2110206A908445	582591491	E 280 CDI	CKD	COIMBATORE	
105	WDB2110206A920150	582591686	E 280 CDI	CKD	COIMBATORE	
106	WDB2110206A920190	582591726	E 280 CDI	CKD	COIMBATORE	
107	WDB2110206A933310	682590046	E 280 CDI	CKD	COIMBATORE	
108	WDB2110206A942648	682590230	E 280 CDI	CKD	COIMBATORE	
109	WDB2110206A942661	682590243	E 280 CDI	CKD	COIMBATORE	
110	WDB2110202A851929	582510086	E 280 CDI	CBU	DC INDIA - CAPITALISED	
111	WDB2110206A920128	582591664	E 280 CDI	CKD	DC INDIA - CAPITALISED	
112	WDB2110206A920129	582591665	E 280 CDI	CKD	DC INDIA - CAPITALISED	
113	WDB2110206A920187	582591723	E 280 CDI	CKD	DC INDIA - CAPITALISED	
114	WDB2110202A968311	682510042	E 280 CDI	CBU	DC INDIA Homologation	
115	WDC1641222A120421	682510043	ML 320 CD	CBU	DC INDIA Homologation	
116	WDD2211222A063646	682510090	S 320 CDI	CBU	DC INDIA Homologation	
117	WDB2110202A851789	582510056	E 280 CDI	CBU	DELHI	
118	WDD2211712A008215	582510082	S 500	CBU	DELHI	
119	WDD2211712A036726	682510023	S 500	CBU	DELHI	
120	WDD2211712A039268	682510022	S 500	CBU	DELHI	
121	WDD2211712A044052	682510039	S 500	CBU	DELHI	
122	WDD2211712A051383	682510058	S 500	CBU	DELHI	
123	WDD2211712A054624	682510056	S 500	CBU	DELHI	
124	WDB2110202A861903	582510084	E 280 CDI	CBU	DELHI	
125	WDB2110202A862371	582510087	E 280 CDI	CBU	DELHI	
126	WDD2211712A037267	682510001	S 500	CBU	DELHI	
127	WDB2110206A850079	582591059	E 280 CDI	CKD	DELHI	
128	WDB2110206A850085	582591065	E 280 CDI	CKD	DELHI	
129	WDB2110206A850088	582591068	E 280 CDI	CKD	DELHI	
130	WDB2110206A850099	582591079	E 280 CDI	CKD	DELHI	
131	WDB2110206A850112	582591092	E 280 CDI	CKD	DELHI	
132	WDB2110206A850116	582591096	E 280 CDI	CKD	DELHI	
133	WDB2110206A850123	582591103	E 280 CDI	CKD	DELHI	
134	WDB2110206A850124	582591104	E 280 CDI	CKD	DELHI	
135	WDB2110206A908430	582591476	E 280 CDI	CKD	DELHI	
136	WDB2110206A908432	582591478	E 280 CDI	CKD	DELHI	
137	WDB2110206A908434	582591480	E 280 CDI	CKD	DELHI	
138	WDB2110206A908442	582591488	E 280 CDI	CKD	DELHI	
139	WDB2110206A908443	582591489	E 280 CDI	CKD	DELHI	
140	WDB2110206A908452	582591498	E 280 CDI	CKD	DELHI	
141	WDB2110206A908463	582591509	E 280 CDI	CKD	DELHI	
142	WDB2110206A908466	582591512	E 280 CDI	CKD	DELHI	
143	WDB2110206A908469	582591515	E 280 CDI	CKD	DELHI	
144	WDB2110206A908472	582591518	E 280 CDI	CKD	DELHI	
145	WDB2110206A920109	582591645	E 280 CDI	CKD	DELHI	
146	WDB2110206A920110	582591646	E 280 CDI	CKD	DELHI	
147	WDB2110206A920111	582591647	E 280 CDI	CKD	DELHI	
148	WDB2110206A920112	582591648	E 280 CDI	CKD	DELHI	
149	WDB2110206A920119	582591655	E 280 CDI	CKD	DELHI	
150	WDB2110206A920120	582591656	E 280 CDI	CKD	DELHI	
151	WDB2110206A920121	582591657	E 280 CDI	CKD	DELHI	
152	WDB2110206A920122	582591658	E 280 CDI	CKD	DELHI	
153	WDB2110206A920125	582591661	E 280 CDI	CKD	DELHI	

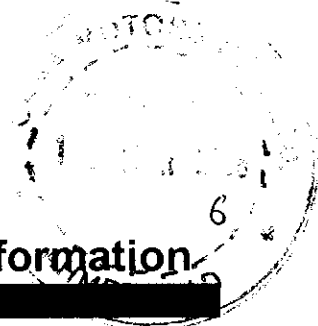
Sr. No.	Chassis No.	Comm. No.	Model	CBU / CKD	Location	Completion status
154	WDB2110206A920126	582591662	E 280 CDI	CKD	DELHI	
155	WDB2110206A920132	582591668	E 280 CDI	CKD	DELHI	
156	WDB2110206A920136	582591672	E 280 CDI	CKD	DELHI	
157	WDB2110206A920137	582591673	E 280 CDI	CKD	DELHI	
158	WDB2110206A920144	582591680	E 280 CDI	CKD	DELHI	
159	WDB2110206A920146	582591682	E 280 CDI	CKD	DELHI	
160	WDB2110206A920154	582591690	E 280 CDI	CKD	DELHI	
161	WDB2110206A920164	582591700	E 280 CDI	CKD	DELHI	
162	WDB2110206A920165	582591701	E 280 CDI	CKD	DELHI	
163	WDB2110206A920166	582591702	E 280 CDI	CKD	DELHI	
164	WDB2110206A920172	582591708	E 280 CDI	CKD	DELHI	
165	WDB2110206A920174	582591710	E 280 CDI	CKD	DELHI	
166	WDB2110206A920176	582591712	E 280 CDI	CKD	DELHI	
167	WDB2110206A920177	582591713	E 280 CDI	CKD	DELHI	
168	WDB2110206A920178	582591714	E 280 CDI	CKD	DELHI	
169	WDB2110206A920184	582591720	E 280 CDI	CKD	DELHI	
170	WDB2110206A920185	582591721	E 280 CDI	CKD	DELHI	
171	WDB2110206A920186	582591722	E 280 CDI	CKD	DELHI	
172	WDB2110206A933307	682590043	E 280 CDI	CKD	DELHI	
173	WDB2110206A933308	682590044	E 280 CDI	CKD	DELHI	
174	WDB2110206A933311	682590047	E 280 CDI	CKD	DELHI	
175	WDB2110206A933316	682590052	E 280 CDI	CKD	DELHI	
176	WDB2110206A933318	682590054	E 280 CDI	CKD	DELHI	
177	WDB2110206A933324	682590060	E 280 CDI	CKD	DELHI	
178	WDB2110206A933329	682590065	E 280 CDI	CKD	DELHI	
179	WDB2110206A933330	682590066	E 280 CDI	CKD	DELHI	
180	WDB2110206A933334	682590070	E 280 CDI	CKD	DELHI	
181	WDB2110206A933335	682590071	E 280 CDI	CKD	DELHI	
182	WDB2110206A942628	682590210	E 280 CDI	CKD	DELHI	
183	WDB2110206A942630	682590212	E 280 CDI	CKD	DELHI	
184	WDB2110206A942631	682590213	E 280 CDI	CKD	DELHI	
185	WDB2110206A942634	682590216	E 280 CDI	CKD	DELHI	
186	WDB2110206A942636	682590218	E 280 CDI	CKD	DELHI	
187	WDB2110206A942639	682590221	E 280 CDI	CKD	DELHI	
188	WDB2110206A942640	682590222	E 280 CDI	CKD	DELHI	
189	WDB2110206A942644	682590226	E 280 CDI	CKD	DELHI	
190	WDB2110206A942651	682590233	E 280 CDI	CKD	DELHI	
191	WDB2110206A942652	682590234	E 280 CDI	CKD	DELHI	
192	WDB2110206A942663	682590245	E 280 CDI	CKD	DELHI	
193	WDB2110206A942668	682590250	E 280 CDI	CKD	DELHI	
194	WDB2110206A942677	682590259	E 280 CDI	CKD	DELHI	
195	WDB2110206A942678	682590260	E 280 CDI	CKD	DELHI	
196	WDB2110206A942686	682590268	E 280 CDI	CKD	DELHI	
197	WDB2110206A942687	682590269	E 280 CDI	CKD	DELHI	
198	WDB2110206A942692	682590274	E 280 CDI	CKD	DELHI	
199	WDB2110206A942693	682590275	E 280 CDI	CKD	DELHI	
200	WDB2110206A942697	682590279	E 280 CDI	CKD	DELHI	
201	WDB2110206A942698	682590280	E 280 CDI	CKD	DELHI	
202	WDB2110206A942699	682590281	E 280 CDI	CKD	DELHI	
203	WDB2110206A942703	682590285	E 280 CDI	CKD	DELHI	
204	WDB2110206A942705	682590287	E 280 CDI	CKD	DELHI	

Check software release of transmission control unit, install new software if necessary

Sr. No.	Chassis No.	Comm. No.	Model	CBU / CKD	Location	Completion status
205	WDB2110206A942710	682590292	E 280 CDI	CKD	DELHI	
206	WDB2110206A942712	682590294	E 280 CDI	CKD	DELHI	
207	WDB2110206A850066	582591046	E 280 CDI	CKD	HYDERABAD	
208	WDB2110206A850083	582591063	E 280 CDI	CKD	HYDERABAD	
209	WDB2110206A850084	582591064	E 280 CDI	CKD	HYDERABAD	
210	WDB2110206A850087	582591067	E 280 CDI	CKD	HYDERABAD	
211	WDB2110206A850101	582591081	E 280 CDI	CKD	HYDERABAD	
212	WDB2110206A850107	582591087	E 280 CDI	CKD	HYDERABAD	
213	WDB2110206A850113	582591093	E 280 CDI	CKD	HYDERABAD	
214	WDB2110206A908419	582591465	E 280 CDI	CKD	HYDERABAD	
215	WDB2110206A908426	582591472	E 280 CDI	CKD	HYDERABAD	
216	WDB2110206A908450	582591496	E 280 CDI	CKD	HYDERABAD	
217	WDB2110206A908470	582591516	E 280 CDI	CKD	HYDERABAD	
18	WDB2110206A908475	582591521	E 280 CDI	CKD	HYDERABAD	
219	WDB2110206A920118	582591654	E 280 CDI	CKD	HYDERABAD	
220	WDB2110206A920152	582591688	E 280 CDI	CKD	HYDERABAD	
221	WDB2110206A920159	582591695	E 280 CDI	CKD	HYDERABAD	
222	WDB2110206A920193	582591729	E 280 CDI	CKD	HYDERABAD	
223	WDB2110206A933314	682590050	E 280 CDI	CKD	HYDERABAD	
224	WDB2110206A933331	682590067	E 280 CDI	CKD	HYDERABAD	
225	WDB2110206A942623	682590205	E 280 CDI	CKD	HYDERABAD	
226	WDB2110206A942645	682590227	E 280 CDI	CKD	HYDERABAD	
227	WDB2110206A942647	682590229	E 280 CDI	CKD	HYDERABAD	
228	WDB2110206A942670	682590252	E 280 CDI	CKD	HYDERABAD	
229	WDB2110206A942671	682590253	E 280 CDI	CKD	HYDERABAD	
230	WDB2110206A942689	682590271	E 280 CDI	CKD	HYDERABAD	
231	WDB2110206A942702	682590284	E 280 CDI	CKD	HYDERABAD	
232	WDB2110206A942691	682590273	E 280 CDI	CKD	JAIPUR	
233	WDB2110206A920160	582591696	E 280 CDI	CKD	KOLKATA	
234	WDB2110206A942635	682590217	E 280 CDI	CKD	KOLKATA	
235	WDB2110206A942654	682590236	E 280 CDI	CKD	KOLKATA	
236	WDB2110206A908425	582591471	E 280 CDI	CKD	LUDHIANA	
237	WDB2110206A908427	582591473	E 280 CDI	CKD	LUDHIANA	
238	WDB2110206A908446	582591492	E 280 CDI	CKD	LUDHIANA	
239	WDB2110206A908477	582591523	E 280 CDI	CKD	LUDHIANA	
240	WDB2110206A920117	582591653	E 280 CDI	CKD	LUDHIANA	
241	WDB2110206A920148	582591684	E 280 CDI	CKD	LUDHIANA	
242	WDB2110206A920191	582591727	E 280 CDI	CKD	LUDHIANA	
243	WDB2110206A920192	582591728	E 280 CDI	CKD	LUDHIANA	
244	WDB2110206A933315	682590051	E 280 CDI	CKD	LUDHIANA	
245	WDB2110206A942695	682590277	E 280 CDI	CKD	LUDHIANA	
246	WDB2110206A942711	682590293	E 280 CDI	CKD	LUDHIANA	
247	WDB2304712F124173	682510091	SL 500	CBU	MUMBAI	
248	WDD2211712A040074	682510028	S 500	CBU	MUMBAI	
249	WDD2211712A043226	682510017	S 500	CBU	MUMBAI	
250	WDD2211712A043885	682510036	S 500	CBU	MUMBAI	
251	WDD2211712A061100	682510072	S 500	CBU	MUMBAI	
252	WDD2211712A062935	682510081	S 500	CBU	MUMBAI	
253	WDD2211712A069716	682510099	S 500	CBU	MUMBAI	
254	WDD2211712A069753	682510100	S 500	CBU	MUMBAI	
255	WDD2211712A042456	682510021	S 500	CBU	MUMBAI	

Sr. No.	Chassis No.	Comm. No.	Model	CBU / CKD	Location	Completion status
256	WDB2110206A850067	582591047	E 280 CDI	CKD	MUMBAI	
257	WDB2110206A850068	582591048	E 280 CDI	CKD	MUMBAI	
258	WDB2110206A850077	582591057	E 280 CDI	CKD	MUMBAI	
259	WDB2110206A850086	582591066	E 280 CDI	CKD	MUMBAI	
260	WDB2110206A850100	582591080	E 280 CDI	CKD	MUMBAI	
261	WDB2110206A850102	582591082	E 280 CDI	CKD	MUMBAI	
262	WDB2110206A850118	582591098	E 280 CDI	CKD	MUMBAI	
263	WDB2110206A850119	582591099	E 280 CDI	CKD	MUMBAI	
264	WDB2110206A908420	582591466	E 280 CDI	CKD	MUMBAI	
265	WDB2110206A908437	582591483	E 280 CDI	CKD	MUMBAI	
266	WDB2110206A908453	582591499	E 280 CDI	CKD	MUMBAI	
267	WDB2110206A908457	582591503	E 280 CDI	CKD	MUMBAI	
268	WDB2110206A908460	582591506	E 280 CDI	CKD	MUMBAI	
269	WDB2110206A908461	582591507	E 280 CDI	CKD	MUMBAI	
270	WDB2110206A908471	582591517	E 280 CDI	CKD	MUMBAI	
271	WDB2110206A908473	582591519	E 280 CDI	CKD	MUMBAI	
272	WDB2110206A908474	582591520	E 280 CDI	CKD	MUMBAI	
273	WDB2110206A920113	582591649	E 280 CDI	CKD	MUMBAI	
274	WDB2110206A920114	582591650	E 280 CDI	CKD	MUMBAI	
275	WDB2110206A920124	582591660	E 280 CDI	CKD	MUMBAI	
276	WDB2110206A920130	582591666	E 280 CDI	CKD	MUMBAI	
277	WDB2110206A920131	582591667	E 280 CDI	CKD	MUMBAI	
278	WDB2110206A920134	582591670	E 280 CDI	CKD	MUMBAI	
279	WDB2110206A920140	582591676	E 280 CDI	CKD	MUMBAI	
280	WDB2110206A920141	582591677	E 280 CDI	CKD	MUMBAI	
281	WDB2110206A920143	582591679	E 280 CDI	CKD	MUMBAI	
282	WDB2110206A920151	582591687	E 280 CDI	CKD	MUMBAI	
283	WDB2110206A920158	582591694	E 280 CDI	CKD	MUMBAI	
284	WDB2110206A920168	582591704	E 280 CDI	CKD	MUMBAI	
285	WDB2110206A920169	582591705	E 280 CDI	CKD	MUMBAI	
286	WDB2110206A920171	582591707	E 280 CDI	CKD	MUMBAI	
287	WDB2110206A920173	582591709	E 280 CDI	CKD	MUMBAI	
288	WDB2110206A920175	582591711	E 280 CDI	CKD	MUMBAI	
289	WDB2110206A920181	582591717	E 280 CDI	CKD	MUMBAI	
290	WDB2110206A920195	582591731	E 280 CDI	CKD	MUMBAI	
291	WDB2110206A933322	682590058	E 280 CDI	CKD	MUMBAI	
292	WDB2110206A933327	682590063	E 280 CDI	CKD	MUMBAI	
293	WDB2110206A933336	682590072	E 280 CDI	CKD	MUMBAI	
294	WDB2110206A942624	682590206	E 280 CDI	CKD	MUMBAI	
295	WDB2110206A942626	682590208	E 280 CDI	CKD	MUMBAI	
296	WDB2110206A942629	682590211	E 280 CDI	CKD	MUMBAI	
297	WDB2110206A942633	682590215	E 280 CDI	CKD	MUMBAI	
298	WDB2110206A942638	682590220	E 280 CDI	CKD	MUMBAI	
299	WDB2110206A942642	682590224	E 280 CDI	CKD	MUMBAI	
300	WDB2110206A942662	682590244	E 280 CDI	CKD	MUMBAI	
301	WDB2110206A942665	682590247	E 280 CDI	CKD	MUMBAI	
302	WDB2110206A942666	682590248	E 280 CDI	CKD	MUMBAI	
303	WDB2110206A942667	682590249	E 280 CDI	CKD	MUMBAI	
304	WDB2110206A942672	682590254	E 280 CDI	CKD	MUMBAI	
305	WDB2110206A942673	682590255	E 280 CDI	CKD	MUMBAI	
306	WDB2110206A942679	682590261	E 280 CDI	CKD	MUMBAI	

Sr. No.	Chassis No.	Comm. No.	Model	CBU / CKD	Location	Completion status
307	WDB2110206A942680	682590262	E 280 CDI	CKD	MUMBAI	
308	WDB2110206A942683	682590265	E 280 CDI	CKD	MUMBAI	
309	WDB2110206A942694	682590276	E 280 CDI	CKD	MUMBAI	
310	WDB2110206A942696	682590278	E 280 CDI	CKD	MUMBAI	
311	WDB2110206A942708	682590290	E 280 CDI	CKD	MUMBAI	
312	WDB2110206A942709	682590291	E 280 CDI	CKD	MUMBAI	
313	WDD2211712A043917	682510032	S 500	CBU	PUNE	
314	WDD2211712A045253	682510037	S 500	CBU	PUNE	
315	WDB2110206A850078	582591058	E 280 CDI	CKD	PUNE	
316	WDB2110206A908439	582591485	E 280 CDI	CKD	PUNE	
317	WDB2110206A908467	582591513	E 280 CDI	CKD	PUNE	
318	WDB2110206A920116	582591652	E 280 CDI	CKD	PUNE	
319	WDB2110206A920139	582591675	E 280 CDI	CKD	PUNE	
20	WDB2110206A920153	582591689	E 280 CDI	CKD	PUNE	
321	WDB2110206A920156	582591692	E 280 CDI	CKD	PUNE	
322	WDB2110206A920180	582591716	E 280 CDI	CKD	PUNE	
323	WDB2110206A933313	682590049	E 280 CDI	CKD	PUNE	
324	WDB2110206A933328	682590064	E 280 CDI	CKD	PUNE	
325	WDB2110206A933332	682590068	E 280 CDI	CKD	PUNE	
326	WDB2110206A942637	682590219	E 280 CDI	CKD	PUNE	
327	WDB2110206A942655	682590237	E 280 CDI	CKD	PUNE	
328	WDB2110206A942658	682590240	E 280 CDI	CKD	PUNE	
329	WDB2110206A942676	682590258	E 280 CDI	CKD	PUNE	
330	WDB2110206A942681	682590263	E 280 CDI	CKD	PUNE	



Service Information

Distribution: Dealers + Service Centres
DCIPL Field Service Rep.

16th March 2006

S. I. No. - IND 27/002

Passenger Car

Applicable to All Models with Automatic Transmission 722.9 (7G-Tronic).

Kind Attention - Workshop Managers

Dear All,

Kindly find herewith the Diagnostic Tree for the repairs on Automatic Transmission 722.9 (7G-Tronic). We kindly request you to refer the suggested repair procedure while attending the jobs on Shift quality complaints on Automatic Transmission 722.9 (7G-Tronic), if any. The systematic repairs procedure will ensure that the diagnosis and repairs are executed in targeted manner.

Complaint

~~Shift quality problem during driving operation~~

Diagnosis Method

1. Verify the affected shift mechanism with Star Diagnosis by checking the actual values of the engaged gears.
2. Follow the steps mentioned in the attached Diagnostic Tree.

The latest version of Star Diagnosis (including AddOns) must be used when programming the transmission control unit. This is the only way to ensure that the latest software is programmed in each case. The testing/ processing of the various steps must be documented with the specified example printouts from Star Diagnosis.

Please note the Part no. for Transmission Oil as A 001 989 4503 and the same needs to be stocked with your workshop. Please refer to WIS document no. BB00.40-P-0236-12A for further information for recommended Transmission oil. Kindly note that the warranty claim will not be entertained, if the above process is not followed.

Contd/2...

Monitor concern as and when it comes across and solve the problem
Dr. Dhany
20/3

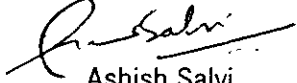
Dr. Dhany
20/3

20-3-06
20/3
20/3
20/3
20/3

Kindly ensure that your concerned staff is well aware of the above.

In case of any queries, please feel free to contact us.

With best regards,
DaimlerChrysler India Private Limited



Ashish Salvi
Dy. General Manager
Field Service



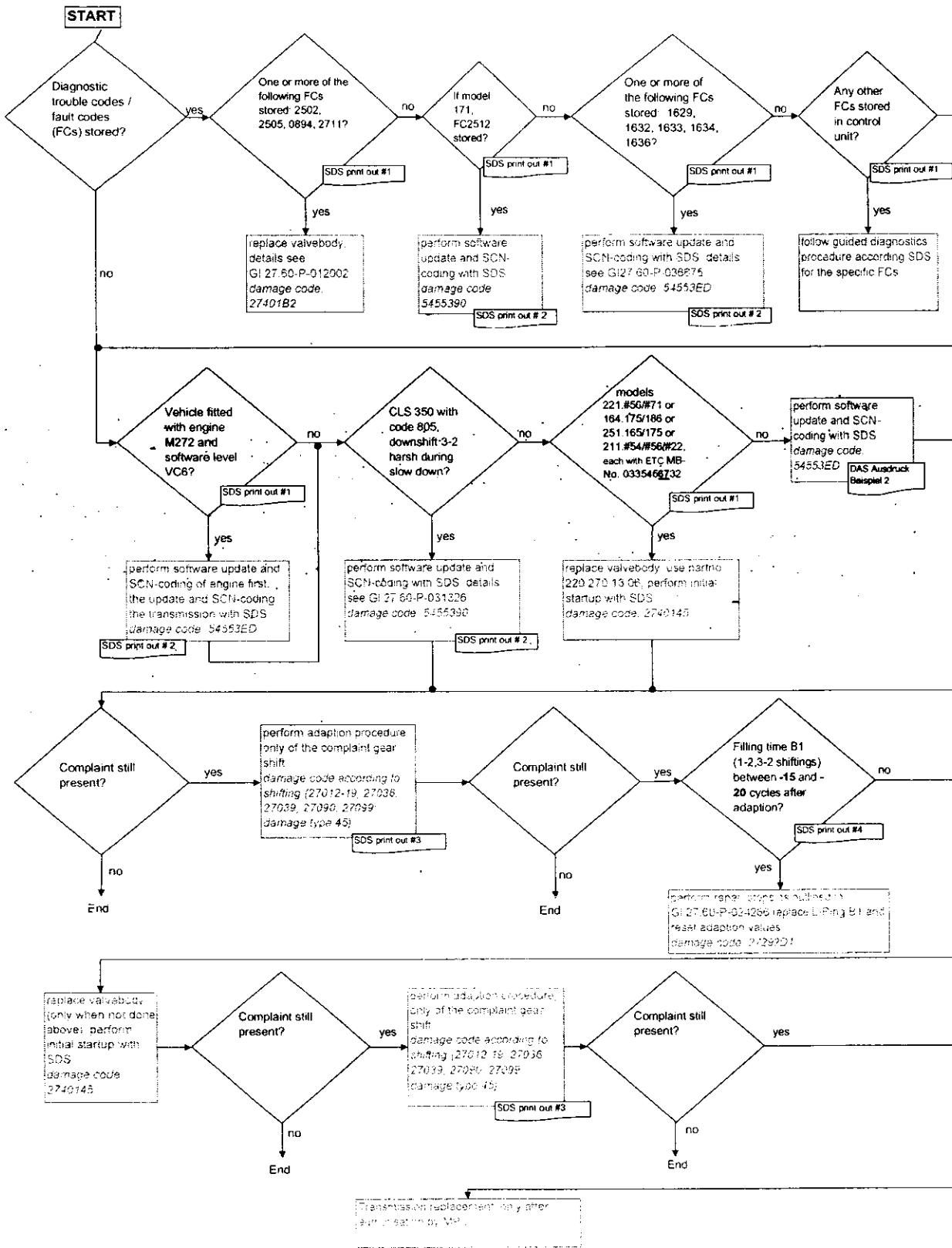
Vaibhav Adwant
Manager
Customer service

Copy to - Mr. D. Chandavarkar
DCIPL Workshop
DC India Service Representatives.
DC India Training Department

Encl: As above

Shiftquality-complaints Automatic Transmission 722.9

Version 2.0



Handwritten signature and date: 27/3/06

mercedesservice@camamotors.com

From: <mercedesservice@camamotors.com>
To: "Mercedes Warranty" <camawarranty@camamotors.com>
Cc: "GM Service" <gmservice@camamotors.com>
Sent: Tuesday, October 21, 2008 1:18 PM
Attach: SI27.00-P-0010A e.pdf
Subject: Fw: SI27.00-P-0010A e :Service Information: Parts identification for transmission and electrohydraulic

— Original Message —

From: sandeep.gadkari@daimler.com
To: partskdh@taipanindia.com ; parts@taipanindia.com ; tntparts@vsnl.net ; spareparts@patelautoindia.com ; ravi.kumar@autocityservices.com ; lamazhari@autocityservices.com ; mercedesspares@camamotors.com ; bernard.furtado@mksanghi.com ; harish.sharma@autohanganindia.com ; m3bwsparts@ddmmpi.com ; mercservice@mahavirhyd.com ; s.vijayakumar@transcar.in ; partsmgr@sundarammotors.com ; smmbpcbe@sundarammotors.com ; muralidhar.kamath@rajasreemotors.com ; sreekumar@rajasreemotors.com
Cc: harpreet.singh@taipanindia.com ; tntmchandran@vsnl.net ; info@patelautoindia.com ; binny.alexander@autocityservices.com ; kerman.gagrat@mksanghi.com ; hoshang.bhagwagar@autohanganindia.com ; roshan@autohanganindia.com ; amin.tehrani@ddmmpi.com ; yashwant@mahavirhyd.com ; transcar@vsnl.net ; transservice@dataone.in ; servicemgr@sundarammotors.com ; smmbpcbe@sundarammotors.com ; smmbwcbe@sundarammotors.com ; kk@rajasreemotors.com ; manpreet.singh@taipanindia.com ; admin@taipanindia.com ; suresh.kumar@rajasreemotors.com ; milind.desai@daimler.com ; sangram.patil@daimler.com ; shaukat.shaiikh@daimler.com ; nitish.shyamal@daimler.com ; manjunatha.nanjegowda@daimler.com ; mahesh.sheode@daimler.com ; lawrence.mascarenhas@daimler.com
Sent: Tuesday, October 21, 2008 12:09 PM
Subject: SI27.00-P-0010A e :Service Information: Parts identification for transmission and electrohydraulic

Dear All,

Please find an important Service Information related to Part Numbers of Transmission and Electrohydraulic Controller Units attached with this mail.

This is for your information and necessary action as needed.

Thanks and regards,

Sandeep Gadkari
 Manager - Parts
 Mercedes-Benz India Private Limited,
 Parts Centre, C/o Phoenix Warehousing Complex,
 Warehouse Gat no. 2323/1/2,
 Pune-Nagar Road, Wagholi,
 Tal. Haveli, Pune - 412 207
 India.

Tel.no. 00 91 20 2705 2779 / 2780 ext 211
 Cell No 00 91 9881073830
 Fax no. 00 91 20 2705 2781 / 2782
 * Visit us at :- <http://www.mercedes-benz.co.in>

If you are not the intended addressee, please inform us immediately that you have received this e-mail in error, and delete it. We thank you for your cooperation.

Ashishbhai → Ashishbhai
 21/10/08
 Nautham → Naut
 Sunish → Sunish
 Rakesh → Rakesh
 Ketan → Ketan
 Jasmine → Jasmine
 Jignesh → Jignesh

10/21/2008



This preliminary information is not subject to updating and hence shall not be archived. The current version will be available in WIS net online in approximately two days, in WIS net offline it will be introduced with the update 11/2008



Group 27

SI27.00-P-0010A

10.10.2008

see Modification Note

SI27.00-P-0010A	Service Information: Parts identification for transmission and electrohydraulic controller unit in EPC	10.10.08
-----------------	--	----------

- TRANSMISSION 722.902 in MODEL 164, 204, 209, 211, 219, 221, 251 with CODE (809) Model year 2009
- TRANSMISSION 722.903 in MODEL 164, 211, 221 with CODE (809) Model year 2009
- TRANSMISSION 722.904 in MODEL 164, 209, 211, 216, 219, 221, 230, 251 with CODE (809) Model year 2009
- TRANSMISSION 722.906 in MODEL 164, 171, 203, 204, 209, 211, 219, 221, 230, 251 with CODE (809) Model year 2009
- TRANSMISSION 722.907 in MODEL 164, 171, 204, 209, 216, 219, 221 with CODE (809) Model year 2009
- TRANSMISSION 722.960 in MODEL 204, 221 with CODE (809) Model year 2009
- TRANSMISSION 722.961 in MODEL 216, 221 with CODE (809) Model year 2009
- TRANSMISSION 722.962 in MODEL 204, 221 with CODE (809) Model year 2009
- TRANSMISSION 722.963 in MODEL 204 with CODE (809) Model year 2009
- TRANSMISSION 722.964 in MODEL 204 with CODE (809) Model year 2009
- TRANSMISSION 722.998 in MODEL 203, 204, 211 with CODE (809) Model year 2009
- TRANSMISSION 722.999 in MODEL 171, 203, 204, 211, 221, 251 with CODE (809) Model year 2009

Modification notes

9.10.08	Table extended		
---------	----------------	--	--

The above-mentioned model designation as of model year 2009 (code 809) will be equipped with a new transmission and electrohydraulic controller units. This production status is currently not yet documented in EPCnet.

The corresponding part numbers for vehicles as of model year 2009 are available in the following table.

The adjusted representation of the part numbers is available in EPCnet Delta1 as of 13.10.2008.

Transmission type designation	Type	Transmission assembly	Electrohydraulic controller unit
722.962	Model 204	A 204 270 60 00	A 220 270 24 06
722.962	Model 221	A 221 270 83 02	A 220 270 24 06
722.963	Model 204	A 204 270 62 00	A 220 270 23 06
722.964	Model 204	A 204 270 63 00	A 220 270 23 06
722.998	Model 203 Model 211	A 211 270 45 02	A 220 270 23 06
722.998	Model 204	A 204 270 53 00	A 220 270 23 06
722.999	Model 171 Model 203 Model 211	A 171 270 87 00	A 220 270 23 06
722.999	Model 204	A 204 270 54 00	A 220 270 23 06
722.999	Model 221	A 221 270 62 02	A 220 270 23 06
722.999	Model 251	A 251 270 68 00	A 220 270 23 06

100

Transmission type designation	Type	Transmission assembly	Electrohydraulic controller unit
722.902	Model 164 except code 494	A 164 270 95 01	A 220 270 24 06
722.902	Model 164 with code 494	A 164 270 96 01	A 220 270 24 06
722.902	Model 221	A 221 270 55 02	A 220 270 24 06
722.902	Model 251	A 251 270 63 00	A 220 270 24 06
722.902	Model 204, 209, 211, 219	A 211 270 42 02	A 220 270 24 06
722.903	Model 211	A 211 270 43 02	A 220 270 24 06
722.903	Model 221	A 221 270 56 02	A 220 270 24 06
722.903	Model 164	A 164 270 97 01	A 220 270 24 06
722.904	Model 211.070/170	A 221 270 57 02	A 220 270 24 06
722.904	Model 216 Model 221.071/171	A 221 270 58 02	A 220 270 24 06
722.904	Model 251	A 251 270 65 00	A 220 270 24 06
722.904	Model 164	A 164 270 98 01	A 220 270 24 06
722.904	MODEL 209 Model 219 Model 221 Type 230.471	A 219 270 19 00	A 220 270 24 06
722.906	Model 171 Model 203 MODEL 209 Model 211 Model 219 Model 230	A 171 270 86 00	A 220 270 23 06
722.906	Model 204	A 204 270 51 00	A 220 270 23 06
722.906	Model 221	A 221 270 61 02	A 220 270 23 06
722.906	Model 251	A 251 270 67 00	A 220 270 23 06
722.906	Model 164	A 164 270 00 02	A 220 270 23 06
722.907	Model 171	A 171 270 88 00	A 220 270 23 06
722.907	MODEL 209 Model 219	A 211 270 44 02	A 220 270 24 06
722.907	Model 204	A 204 270 50 00	A 220 270 24 06
722.907	Model 221 Model 216	A 221 270 21 00	A 220 270 19 06
722.907	Model 164	A 164 270 99 01	A 220 270 24 06
722.960	Model 204	A 204 270 61 00	A 220 270 23 06
722.960	Model 221	A 221 270 79 02	A 220 270 23 06
722.961	Model 216 Model 221	A 221 270 81 02	A 220 270 24 06

(A1)

- Automatic transmission 722.9 in limp-home mode, fault codes 2200, 2201, 2767, 2768 -

Topic number	GI27.50-P-035556
Version	5
Design group	27.50 Gear assembly
Date	02-19-2009
Validity	Transmission 722.9
Reason for change	Validity changed

Complaint

Automatic transmission 722.9 switches to limp-home while driving (gearshifts no longer possible); one or more of the following fault codes are stored or current: 2200, 2201, 2767, 2768

Cause

Rpm sensor fault

Remedy

Replace electrohydraulic controller unit (EHS).

Symptoms

Symptom
Power transmission / Automatic transmission / Automatic transmission - function / Limp-home mode
Power transmission / Automatic transmission / Automatic transmission - function / Electrical fault/Fault code

Operation numbers/damage codes

Op. no.	Time	Damage code	Note
Operation text			

27-4989

5337673

Rpm sensor fault on EHS replacement

EHS REPLACEMENT

Validities

Vehicle	Engine	Transmission	Major assembly (1)	Major assembly (2)	Major assembly (3)
*	*	722.902	*	*	*
*	*	722.998	*	*	*
*	*	722.961	*	*	*
*	*	722.907	*	*	*
*	*	722.901	*	*	*
*	*	722.904	*	*	*
*	*	722.950	*	*	*
*	*	722.960	*	*	*
*	*	722.966	*	*	*
*	*	722.930	*	*	*
*	*	722.906	*	*	*
*	*	722.964	*	*	*
*	*	722.962	*	*	*
*	*	722.999	*	*	*
*	*	722.903	*	*	*

 Show full validity description