

DAIMLERCHRYSLER

Service Information

Distribution: Dealers + Service Centres
DCIPL Field Service Rep.

x
x

31st March 2006

S. I. No. - IND 27/003

Passenger Car

Humming, droning and/or jolting during gentle acceleration at engine speeds between 1200 rpm and 2500 rpm

Transmission 722.6 in MODEL 203 up to 30.9.03 with ENGINE 111, 112, 271, 611, 612, 990, 646

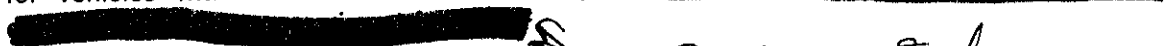
Transmission 722.6 in MODEL 209 up to 30.9.03 with ENGINE 112, 113, 271, 612

Transmission 722.6 in MODEL 211 up to 30.9.03 with ENGINE 113, 271, 628, 647, 648

Kind Attention - Workshop Managers

Dear All,

Please refer the below mentioned diagnosis procedure for the complaint of Humming, droning and/or jolting during gentle acceleration at engine speeds between 1200 rpm and 2500 rpm for vehicles with 722.6 transmission.



To be noted important instruction

Diagnosis Method

Modification notes

16.2.06	Revised repair procedure for a test result up to 100 mg/l glycol in the automatic transmission fluid	Step 6	Page 5
---------	--	--------	--------

Operation no. of operation texts or standard texts and flat rates

Category	Op. no.	Operation text
P	024609	Perform glycol test

Handwritten notes: D, R, 7-4-06, and a signature.

*DKanj
Pl. go through, educate all your concerned staff / Technicians and adhere guideline / instruction mentioned here above strictly. Pl. confirm your action.*

Contd/2 ...

Handwritten signature and number 2103

Damage code	Cause	Remedy	
	<ul style="list-style-type: none"> - Faulty transmission control unit - Torque converter lockup clutch not adapted - Dirty torque converter lockup clutch disks - Glycol in transmission oil <p>Humming/droning noises can occur in the speed range between 1200-2500 rpm. In addition the vehicle can jolt in this speed range. The complaint can be reproduced at any time.</p>	<p>Always work through steps 1 to 5 in sequence.</p> <p>1 The complaint is not longer comprehensible after disengaging the torque converter lockup clutch on an experimental basis. Deactivate torque converter lockup clutch for one ignition sequence using the Diagnosis Assistance System (DAS).</p>	
		<p>1 Selection in Diagnosis Assistance System:</p> <p style="text-align: center;">↓</p> <ul style="list-style-type: none"> - "Control units" - "Drive" - "Electronic transmission control" - "Diagnosis routine" <p>The torque converter lockup clutch can now be deactivated in transmission mode "C" or "W".</p>	
54 553 90		<p>1 Only on model 211 up to vehicle ident. number 089500:</p> <p style="text-align: center;">↓</p> <p>2 Check transmission control unit.</p>	AF27.10-P-9100AG
27 287 H4		3 Carry out adaptation of the torque converter lockup clutch.	AF27.10-P-1300-01A
14 370 38		4 Check the mounting of the diesel particulate filter, if necessary tighten to the specified tightening torque	
27 431 04		<p>If the complaint still persists and if the following basic conditions apply:</p> <ul style="list-style-type: none"> - The vehicle was produced before 09/03 - Mileage more than 10 000 km - A Valeo radiator is installed in the vehicle (crimping must be visible, see picture) <p style="text-align: center;">↓</p> <p>1 Wear safety glasses during the glycol test.</p> <p>It is essential to adhere to the timing specifications so that the measurement result is not invalidated. The glycol test is durable for 18 months at a storage temperature of 15-25 °C. The glycol test is designed for 30 tests.</p> <p>5 Perform glycol test</p>	AF27.10-P-1300-02A
		6 Carry out the repair procedure corresponding to the test result: ↓	

Contd/3 ...

Damage code	Cause	Remedy	
→ 27 431 04	<p>1 Use damage code corresponding to the result of the fault diagnosis..</p>	<ul style="list-style-type: none"> - up to 100 mg/l glycol in the automatic transmission fluid: Carry out procedure as per diagnosis tree for torque converter lockup clutch (KÜB). - as of 100 mg/l: Replace radiator; flush converter, lines and transmission. <p>Flush out automatic transmission and converter</p>	<p>Page 5</p> <p>AR27.55-P-0100A</p>
		<p>1 If the complaint is still comprehensible after the flushing routine, only the torque converter also has to be replaced. Before installation, the new radiator must be marked with a white color coding (picture 2).</p>	

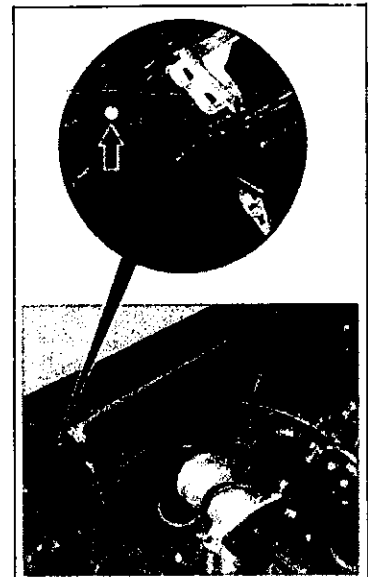
Picture 1: Crimping



P20.20-2284-11

Fig. 2

Arrow White color dot on the waterbox of the transmission oil cooler



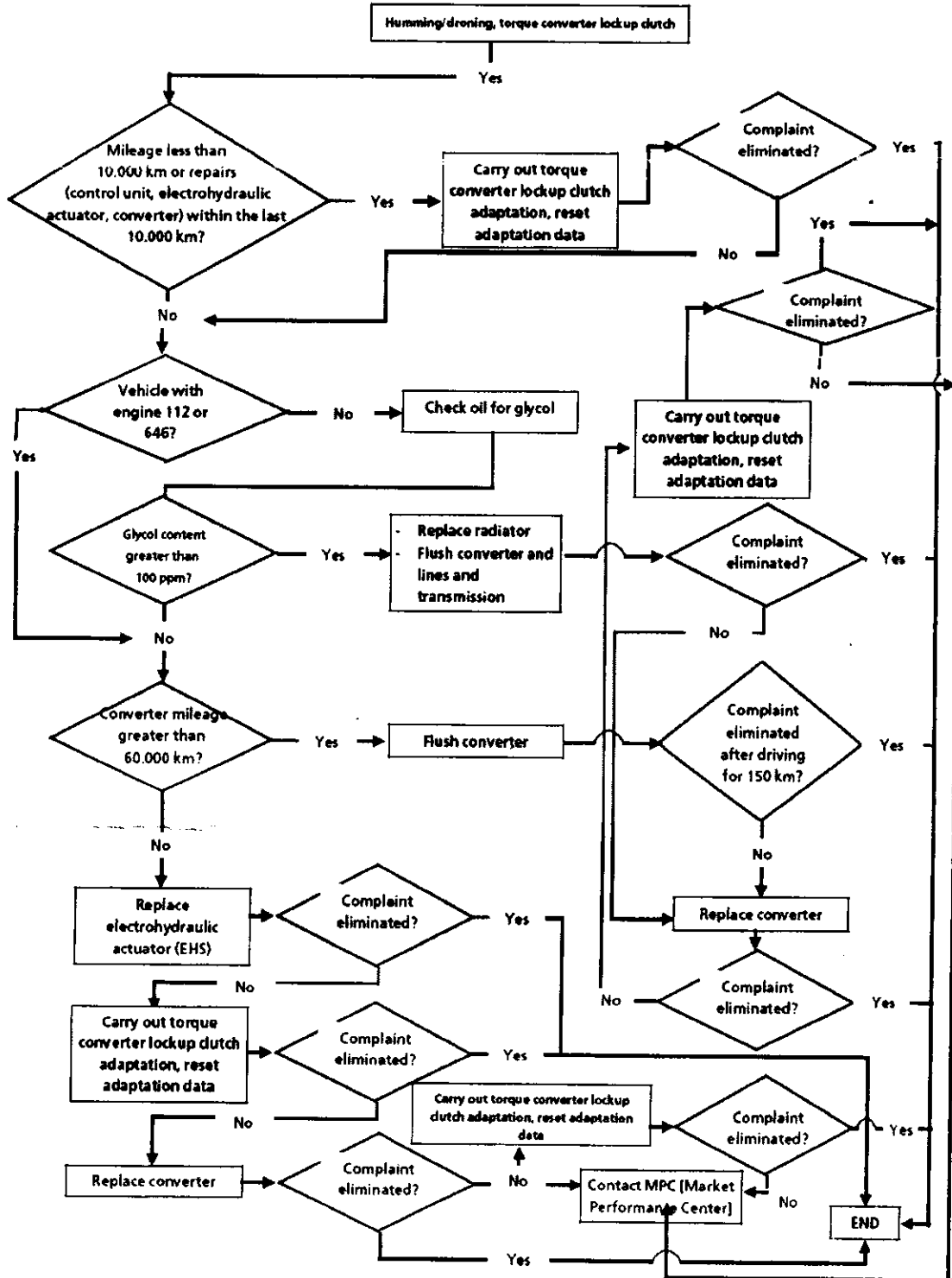
P27.55-2953-03

Contd/4 ...

Parts ordering notes

Part no.	Designation	Quantity
A 000 989 00 09	Glycol test 1 (only use together with test 2)	1
A 000 989 00 14	Glycol Test 2 (only use together with Test 1)	1

AF27.10-P-1300-03A	Diagnosis tree for torque converter lockup clutch (KÜB)		
--------------------	---	--	--



Contd/5 ...

: 5 :

Kindly ensure that your concerned staff is well aware of the above.

In case of any queries, please feel free to contact us.

With best regards,
DaimlerChrysler India Private Limited



Ashish Salvi
Dy. General Manager
Field Service



Devendra Thakur
Sr. Manager
Customer service

Copy to - Mr. D. Chandavarkar
DCIPL Workshop
DC India Service Representatives.
DC India Training Department