

All vehicles tracked
 on vdc's list attached
 herewith for reference.

DAIMLERCHRYSLER

duy
rajn

DaimlerChrysler
 India Private Limited
 Pune, October 12, 2004

All Workshop Incharge
 DC India dealerships / ASC

**Service Measure - Check connectors and low pressure hoses of the high pressure pump unit, replace, if necessary.
 Model 211 with engine OM 646, 647, 648**

Dear All,

On model W 211 vehicles with engine OM 646, 647, 648, please check the connectors and low pressure hoses of the high pressure pump unit for fuel leakage. The detailed work instruction is attached here with. Please perform the above measure on vehicles mentioned in the attached CD during their **next visit to workshop.**

Operation texts and flat rates:

<u>Operation no.</u>	<u>Flat rate</u>	<u>Operation Text</u>
02-4365	0.3h	Check low pressure lines (following quick test)
02-4366	0.3h	Replace low pressure lines (following check)

Parts:

<u>Part Designation</u>	<u>Part No.</u>	<u>Quantity</u>	
Fuel hose, feed line (OM 646)	A 646 070 11 81 05	1	} 646 070 11 81 / A 646 070 12 81 05
Fuel hose, return line (OM 646)	A 646 070 12 81 05	1	
Fuel hose, feed line (OM 647)	A 647 070 03 81 05	1	} 33 81 / A 647 070 04 81 05
Fuel hose, return line (OM 647)	A 647 070 04 81 05	1	
Fuel hose, feed line (OM 648)	A 648 070 05 81 05	1	0081
Fuel hose, return line (OM 648)	A 648 070 06 81 05	1	1081
Click clamp (OM 646,647,648)	A 006 997 18 90	3	3381
Click clamp (OM 646,647,648)	A 004 997 20 90	1	

Cont.....2

Board of Management :
 Dr. Klaus-Peter Arnold, Piyush Arora, Hans-Michael Huber (Speaker),
 Suhas Kadlaskar, Rolf Löffler, Augustus Mallier, Sanjiv Sahajwala

A Company of the DaimlerChrysler Group

duy

Registered office, Corporate Office & Works :
 Sector 15-A, Chikhali
 Pimpri, Pune 411 018 (India)
 Phone: (+91) 20 27505000
 www.mercedes-benz.co.in

Damage Code: 007930077 (in case of repairs with part replacement)
007930078 (in case of repairs without any part replacement)

Cost Settlement:

A warranty/goodwill claim for the costs of labor and material (if any) may be submitted to us, quoting the **accounting number 0793007**.

Completion Deadline:

The above campaign should be completed by **30th April 2005**.

Please acknowledge receipt of this letter and feel free to revert to us for any queries.

Thanking you

With best regards,
DaimlerChrysler India Private Limited



D. Chandavarkar
General Manager
Aftersales



Ashish Salvi
Divisional Manager
Field Service

Copy to - DCIPL Service Representatives } for close follow up with the workshops

Encl. - Work Instruction
- CD containing vehicle list

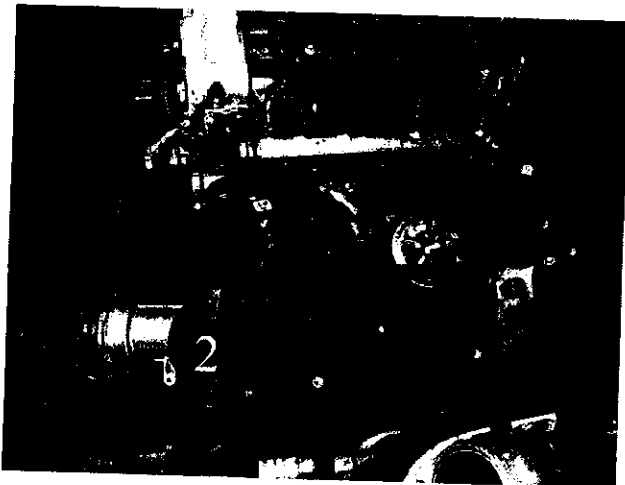
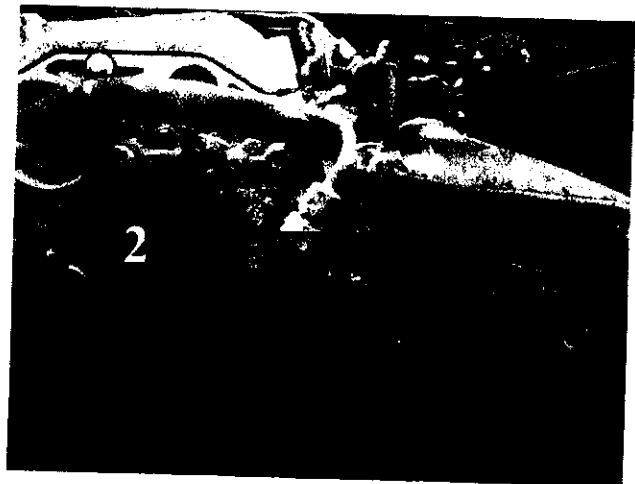
Codeword: 0404P07A45

Work description

**Check connectors and low pressure hoses of the high pressure pump unit, replace, if necessary
Model 211 with engine OM 646, 647, 648**

Work scope

1. Remove design cover.
2. Remove cover plate (1) over connectors to low pressure hoses (2) at the high pressure pump unit
3. Spray contrast medium on connectors and low pressure hoses (2)
4. Check low pressure hoses for leaktightness, replace them if necessary.
5. Remount cover plate over connectors to low pressure hoses at the high pressure pump unit
6. Remount design cover



Parts

Qty.*	Designation	Parts-No.
1	Fuel hose, feed line (OM 646)	A 646 070 11 81 05
1	Fuel hose, return line (OM 646)	A 646 070 12 81 05
1	Fuel hose, feed line (OM 647)	A 647 070 03 81 05
1	Fuel hose, return line (OM 647)	A 647 070 04 81 05
1	Fuel hose, feed line (OM 648)	A 648 070 05 81 05
1	Fuel hose, return line (OM 648)	A 648 070 06 81 05
3	Click clamp (OM 646, 647, 648)	A 006 997 18 90
1	Click clamp (OM 646, 647, 648)	A 004 997 20 90

*according to condition or model

Operation text and flat rate

Operation no.	Operation text	Flat rate
02-4365	Check low pressure lines (following quick test)	0.3 hours
02-4366	Replace low pressure lines (following check)	0.3 hours

DaimlerChrysler AG
Global Service & Parts