

All vehicles
traced in vde's
total vehicles 20 cars
OK
18/10/04
list attached.

DAIMLERCHRYSLER

DaimlerChrysler
India Private Limited

Pune, October 12, 2004

All Workshop Incharge
DC India dealerships / ASC

Service Measure – Check water drain grommet in front wheelhouse on driver and front passenger sides and remove if necessary.

Model 211

Dear All,

We are in receipt of subject Service Measure (prevention measure) from DCAG. As per the enclosed instructions, water drain grommets in both front wheelhouses are to be removed to avoid consequential damages due to water accumulation. The detailed work instruction is attached here with. Details of the vehicles in your region are mentioned in the enclosed CD. Please perform this measure on the vehicles during their **next visit to the workshop.**

Operation texts and flat rates:

<u>Operation no.</u>	<u>Flat rate</u>	<u>Operation Text</u>
02-4438	0.3h	Check water drain grommet in front wheelhouse on driver and front passenger sides (following quick test)
02-4382	0.1h	Remove water drain grommet in front wheelhouse on driver and front passenger sides (following quick test)

Damage Code: 068910348

Cost Settlement:

A warranty/goodwill claim for the costs of labor and material (if any) may be submitted to us, quoting the **accounting number 68 910 34.**

Cont.....2

Board of Management :
Dr. Klaus-Peter Arnold, Piyush Arora, Hans-Michael Huber (Speaker),
Suhas Kadlaskar, Rolf Löffler, Augustus Mallier, Sanjiv Sahajwala

A Company of the DaimlerChrysler Group

Registered office, Corporate Office & Works :
Sector 15-A, Chikhali
Pimpri, Pune 411 018 (India)
Phone: (+91) 20 27505000
www.mercedes-benz.co.in

AM

Completion Deadline:

Please complete this activity by **30th April 2005**.

Please acknowledge receipt of this letter and feel free to revert to us for any queries.

Thanking you,

With best regards,
DaimlerChrysler India Private Limited



D. Chandavarkar
General Manager
Aftersales



Ashish Salvi
Divisional Manager
Field Service

Copy to - DCIPL Service Representatives } for close follow up with the workshops

Encl. - Work Instruction and
- CD containing vehicle list

Code: 0311P68A46

Work description

Check water drain grommet in front wheelhouse on driver and front passenger sides and remove if necessary

Model 211

Testing procedure

1. Turn steering wheel all the way to the left.
2. Loosen screws and expansion rivets on the left fender liner, see Fig. 2.
3. Press fender liner to the side with wedge tool.
4. Check water drain passage. If a water drain grommet is installed, then remove it according to the following procedure. (This procedure is valid for both sides of the vehicle)

Procedure

5. Loosen nuts on the grommet. Remove grommet and do not reinstall, see Fig. 3 and Fig. 4.



Fig. 1



**Screws/expansion
rivets to be loosened**

Fig. 2

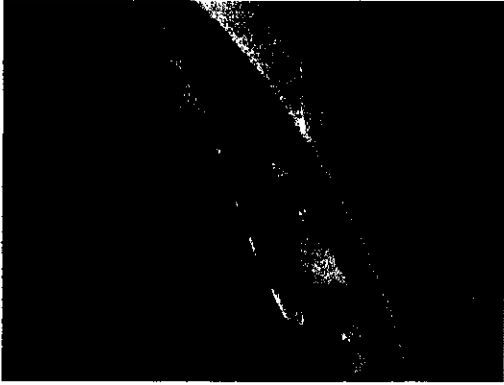


Fig. 3

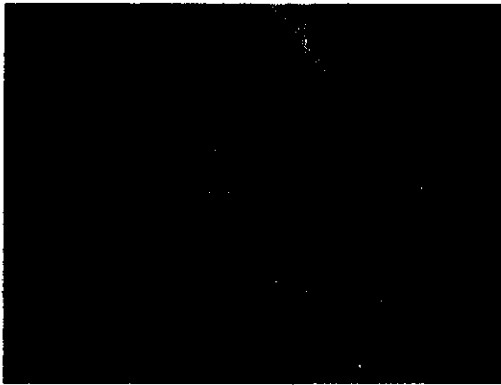


Fig. 4

Operation text and flat rate

Operation no.	Flat rate	Accounting no.
Check water drain grommet in front wheelhouse on driver and front passenger sides (following quick test) 02-4438	0.3 h	68 910 34
Remove water drain grommet in front wheelhouse on driver and front passenger sides (following quick test) 02-4382	0.1 h	68 910 34

DaimlerChrysler AG
Global Service & Parts