



Damage code

0 88920467

A warranty/goodwill claim for the costs of labour and material (if any) may be submitted to us, quoting the accounting number 8892046.

This service measure should be completed by the end of October 2004.

Please acknowledge receipt of this letter and feel free to contact us if you have any queries.

With best regards,

DaimlerChrysler India Private Limited



D.Chandavarkar  
Divisional Manager  
Field Service



Devendra Thakur  
Sr. Manager  
Customer Service

Encl. – Work Instruction  
– Vehicle List

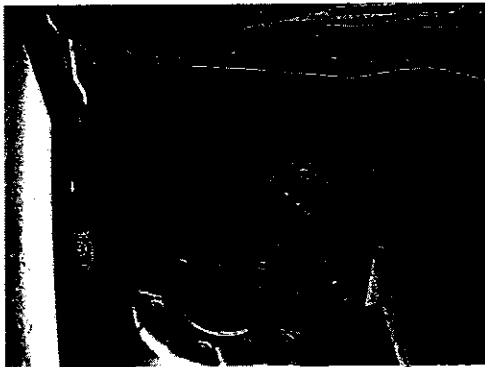
Work description for service measure at next workshop stay

**Check cover under the air inlet slits on the engine hood and retrofit if necessary.  
Model W 203 RHD**

---

**Procedure**

1. Open engine hood as described in AR88.40-P-1000M.
2. Visually inspect to see if a cover is installed on top of the brake fluid reservoir. If this is not installed (see Figure 1), continue with step 3. If the cover is installed (Figure 2), no work needs to be performed.



**Figure 1**  
Cover not installed

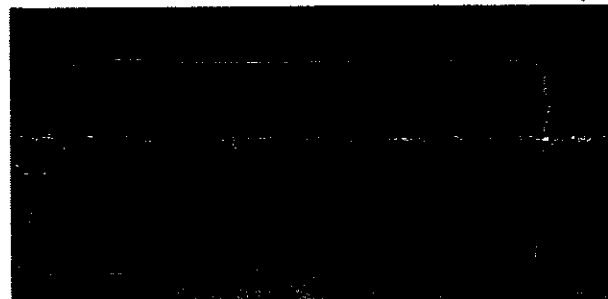


**Figure 2**  
Cover installed

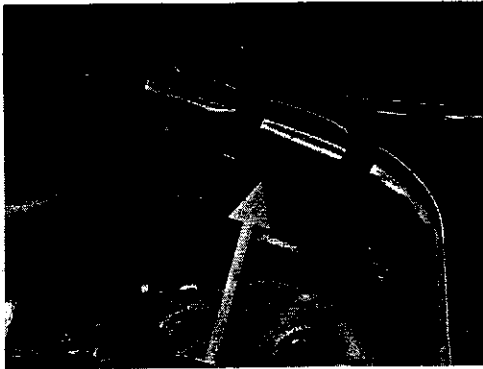
3. Remove rubber seal (Figure 3) from the partition wall and mount (Figure 5) bracket (Figure 4). Reattach rubber seal.



**Figure 3**  
Rubber seal on partition wall

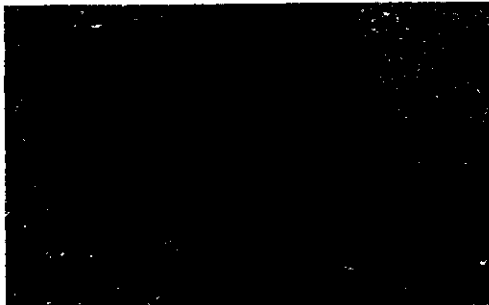


**Figure 4**  
Bracket



**Figure 5**  
**Bracket mounted to partition wall**

4. Guide the cover (Figure 6) into the bracket. Mark the position of the right interlocking hole. Cut out the interlocking hole (Figure 7). For this, it is recommended that you use a 7 mm drill bit to bore 2 holes right next to each other, then file them to an elongated hole.

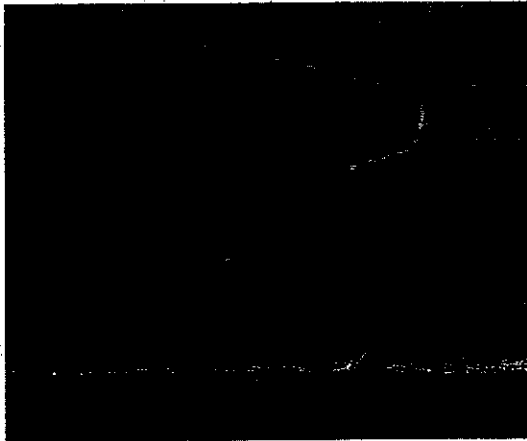


**Figure 6**  
**Cover**



**Figure 7**  
**Cut out hole**

5. Guide cover into the bracket and lock onto the cover of the wiper linkage using a clip (Figure 8).



**Figure 8**  
Clip

**Parts**

Qty.	Description	Part number
1	Cover	A 203 830 16 13
1	Clip	A 002 988 05 42
1	Bracket	A 203 831 01 14

**Operation text and flat rate**

Operation no. rate	Operation text	Flat
02-3999	Check cover under the air inlet slits on the engine hood and retrofit if necessary.	0.5 hrs.



Mercedes-Benz

Cama Motors Pvt. Ltd  
Dealer for Mercedes Benz  
Passenger Cars

Date : 31/10/03

To,  
**Mr. Devendra Thakur**  
**Sr. Manager – Customer Service**  
**DCIPL**  
Sector 15/A, Chikhali  
Pimpri  
**Pune – 411 018**

**Sub. : Service Measure.**

Dear Sir,

In connection with the above subject and your service measure dated 22<sup>nd</sup> October 2003, we will like to inform you that we have thoroughly checked all the 8 Chassis Numbers provided by you. Out of all the 8 Chassis Numbers only one vehicle bearing **Chassis Number : WDC2030452R011458** belongs to our territory.

In the same respect, the service measure will be completed on the said vehicle, next time when the vehicle visits our workshop.

This is for your information and action for the remaining 7 vehicles please.

With best regards

**FOR CAMA MOTORS PVT. LTD.**

  
**Major (Retd.) Vishwanathan Nair**  
(GM- Service)

  
**Alok Mehrotra**  
(Officer- Customer care)

o/c

Cama Motors Pvt. Ltd., Showroom & Workshop: Rustom Cama Marg, Lal Darwaja, Ahmedabad 380 001  
Phone: (079) 550 5281 to 89, 5505165, 5505745, 5505776 Fax: (079) 5500491  
e-mail: [cama@satyam.net.in](mailto:cama@satyam.net.in)