

| | | |
|-----------------|---|---------|
| SI54.21-P-0008A | Service Information: Programming of control units | 2.12.10 |
|-----------------|---|---------|

MODEL 129.058 /063 /067 /076, 163, 164, 168, 169, 170, 171.4, 199, 203, 208, 209, 211, 215, 219, 220, 221, 230, 240, 245, 251, 461.302 /331 /332 /342 /345, 463.206 /208 /209 /232 /233 /240 /241 /243 /244 /245 /246 /247 /248 /249 /250 /254 /270 /271 /308 /309 /322 /323 /332 /333, 450, 451, 452, 454 (except , 245.286)

i The control unit programming is carried out in DAS via the menu items "Control unit adaptations" or "Commissioning". The associated control unit software is determined automatically. After the successful programming process a form for documentation of the repair order can be printed out.

In problem cases it is possible to update the DAS-data via the Add-On process. The associated download link is <https://aftersales.i.daimler.com/sdupdate/index.html> or you can use the Online Update Client direct on your diagnosis system.

In exceptional cases it is possible to order a special release CD from your diagnosis User Help Desk. In the event of questions and problems please contact the diagnosis User Help Desk.

| | | | |
|-----------|------------------------------------|--|--------------------|
| i | Notes on programming control units | Off-line programming with SDflash Special Release-CD | AH54.21-P-0001-03Z |
| AR | Programming of control units | Off-line programming with SDflash Special Release-CD | AR54.21-P-0014Z |

Program using STAR DIAGNOSIS (Xentry flash)

i **Xentry Flash:** The term Xentry flash is used to designate the Daimler AG standard for programming control units. In the process a distinction is made between two types of programming:

- Offline programming with Release CD
- Offline programming with Special Release CD

Further explanation of terms:

- **Flashing:** Programming of control units
- **Software:** Control unit software
- **Release CD:** Control unit software, integrated onto DAS DVD
- **Special Release CD:** Special CD which contains software updates

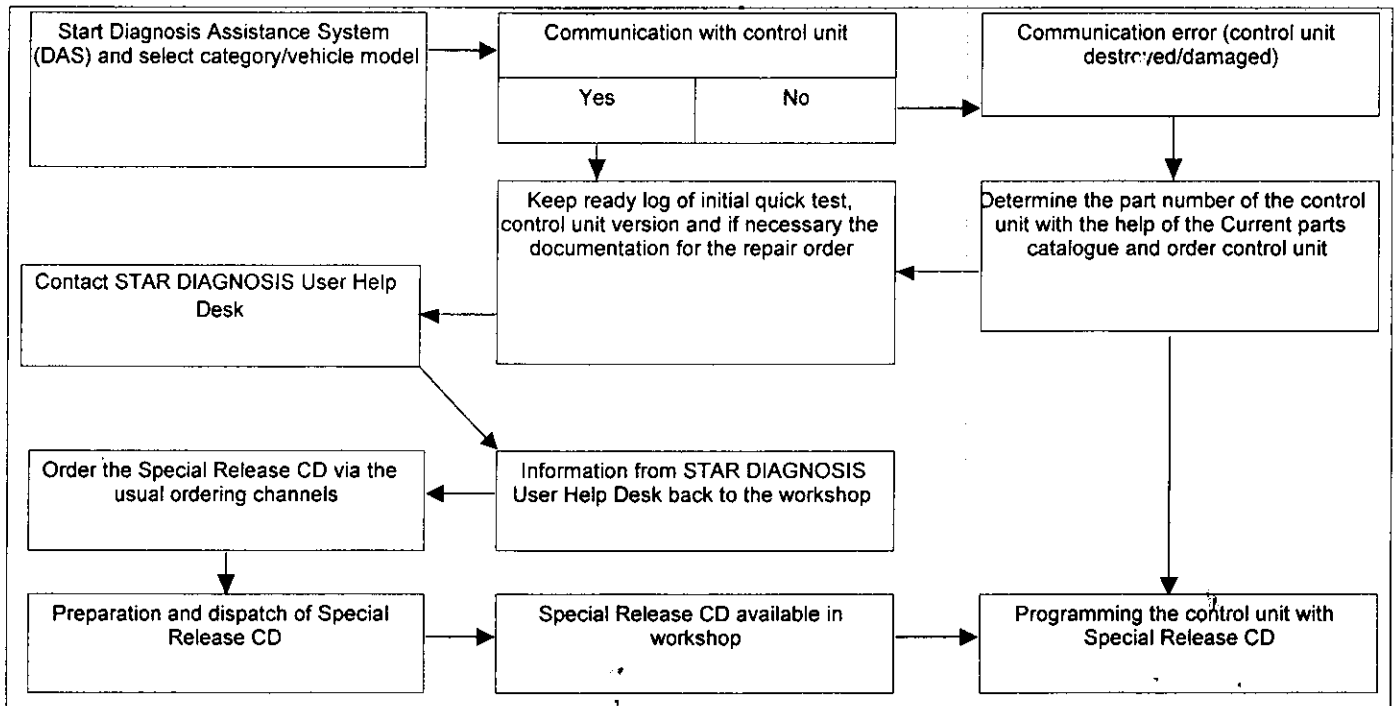
Offline programming with Special Release CD

- The Special Release CD is a special CD which contains software updates
- The workshop must ask for the Special Release CD at the STAR DIAGNOSIS user help desk and request it via the usual ordering channels
- Manual redocumentation required in the vehicle documentation system (FDOK)

| | | |
|-----------------|--|---------|
| AR54.21-P-0014Z | Programming of control units | 19.7.11 |
| MODEL | 129.058 /063 /067 /076, 163, 164, 168, 169, 170, 171, 199, 203, 204, 207, 208, 209, 210, 211, 212, 215, 216, 218, 219, 220, 221, 230, 240, 245, 246, 251, 461.302 /304 /305 /331 /332 /333 /334 /340 /342 /343 /344 /345 /346, 463.206 /208 /209 /232 /233 /240 /241 /243 /244 /245 /246 /247 /248 /249 /250 /254 /270 /271 /303 /306 /308 /309 /322 /323 /332 /333 /336 /340 /341 /346 (except , 245.286) | |

Offline programming with Special Release CD

| | | | |
|----|---|--|--------------------|
| ① | An adequate power supply to the vehicle onboard electrical system is to be ensured as damage to the control units may arise if undervoltage occurs | | |
| i | Notes on programming control units | | AH54.21-P-0001-03Z |
| i | Flow chart for offline programming with Special Release CD | | AH54.21-P-0001-04Z |
| 1 | Connect STAR DIAGNOSIS, start Diagnosis Assistance System (DAS) and select category/vehicle model Connect STAR DIAGNOSIS and read out fault memory | i Communication with control unit is established. | AD00.00-P-2000-04A |
| 2 | Determine the part number of the control unit with the aid of the current parts catalog | Only required if data cannot be read out of the control unit. | |
| 3 | Contact STAR DIAGNOSIS User Help Desk | If the control unit does not communicate with the DAS or the problem cannot be eliminated with the monthly Release CD or DAS-DVD. i Have ready the event log of the initial quick test, the control unit version and if necessary the documentation for the repair order. | |
| 4 | Fax log of initial quick test, control unit version and if necessary documentation on the repair order to the STAR DIAGNOSIS User Help Desk | i This information is needed for problem solving. From this information the Special Release CD is prepared at LC/MPC GLC Germersheim. STAR DIAGNOSIS User Help Desk reports to the workshop and gives the replacement part number, incl. "ES 2", of the Special Release CD. | |
| 5 | Order the Special Release CD via the usual ordering channels | i "ES 2" is also to be specified next to the part number when ordering. Preparation and shipment of Special Release CD at LC/MPC GLC Germersheim. LC/MPC GLC Germersheim sends the Special Release CD via the usual sales/marketing channel. | |
| 6 | Program the control unit after receipt of the Special Release CD | | AR54.21-P-0014-01Z |
| 7 | Carry out redocumentation in the vehicle documentation system (FDOK/VeDok) in the FDOK/VeDok screen | Only after successfully programming the control unit. i If no FDOK/VeDok access is available, send fax or email to LC/MPC GLC Germersheim, to get redocumentation carried out there. | |
| 8 | Perform SCN coding of control units | Only when required, refer to DAS. | AR54.21-P-0015X |
| 9 | Run teach-in procedures | Only when required, refer to DAS. | |
| 10 | Read out fault memory, erase if necessary | | |
| 11 | Disconnect STAR DIAGNOSIS | | |



R54.21-P-0014-01Z

Program control unit

i Offline programming with special release CD.

1 Start Diagnosis Assistance System (DAS) and select category/vehicle model.

2 Select control unit.

i Selection of main menu, systems and select the control unit to be programmed.

3 Select menu item "control unit adaptations".

4 Select menu item "control unit programming".

5 Select "Offline (STAR DIAGNOSIS device not-networked)" menu item.

6 Select menu item "Program control unit using DVD or removable storage device".

7 Insert Special Release CD.

i The programming of the control unit now starts automatically.

AR54.21-P-0016X **SCN coding of control units** 19.7.11


MODEL 129.068 /063 /067 /076, 163, 164, 166, 168, 169, 170, 171, 199, 203, 204, 207, 208, 209, 210, 211, 212, 215, 216, 218, 219, 220, 221, 230, 240, 245, 246, 251, 450, 452, 454, 461.302 /304 /305 /331 /332 /333 /334 /340 /342 /343 /344 /345 /346, 463.208 /208 /209 /232 /233 /240 /241 /243 /244 /245 /246 /247 /248 /249 /250 /254 /270 /271 /303 /306 /308 /309 /322 /323 /332 /333 /336 /340 /341 /346

| | | | |
|-----|--|---|---|
| | | Ⓢ During the entire work procedure a sufficiently large voltage supply must be provided for the vehicle's on-board electrical system. Otherwise undervoltage damage may occur to the control units. | |
| 1 | Connect STAR DIAGNOSIS and start Diagnosis Assistance System (DAS) Connect STAR DIAGNOSIS and read out fault memory | Model 129, 163, 164, 166, 168, 169, 170, 171, 199, 203, 204, 207, 208, 209, 210, 211, 212, 215, 216, 218, 219, 220, 221, 230, 240, 245, 246, 251, 461, 463 Model 450 Model 452 Model 454 | AD00.00-P-2000-04A AD00.00-P-2000-04SM AD00.00-P-2000-04RR AD00.00-P-2000-04FF |
| 2.1 | Perform online Software Calibration Number (SCN) coding | With networked STAR DIAGNOSIS diagnosis system | AR54.21-P-0013-01X |
| 2.2 | Perform offline Software Calibration Number (SCN) coding | With non-networked STAR DIAGNOSIS diagnosis system | AR54.21-P-0013-04X |
| 3 | Read out fault memory, erase if necessary | | |
| 4 | Disconnect STAR DIAGNOSIS | | |

Operation no. of operation texts or standard texts and flat rates

| Category | Op. no. | Operation text |
|----------|---------|--|
| P | 024762 | Connect/disconnect Diagnosis Assistance System (DAS) |
| P | 025017 | In addition to: Install software: Connect/disconnect battery charger |
| P | 025058 | Connect/disconnect battery charger (with DAS connected) |
| P | 026075 | Code control unit as per DAS (with DAS connected) |

| | | | |
|----------|---------------------------|---|---|
| i | List of affected vehicles | <p>Model 164 from 4JG1641221A303943 to WDC1648861A190248</p> <p>Model 168 from WDB1680332J686893 to WDB1681331J722544</p> <p>Model 169 from WDD1690061J029061 to WDD1693342J418838</p> <p>Model 171 from WDB1714421F106466 to WDB1714731F127556</p> <p>Model 203 from WDB2030071A828358 to WDC2030562R243686</p> <p>Model 204 from WDD2040071A011708 to WDD2042891F177152</p> <p>Model 209 from WDB2093541F184130 to WDB2094751T056015</p> <p>Model 211 from LE42110525L010987 to WDB2116201B258116</p> <p>Model 216 from WDD2163711A000393 to WDD2163791A017353</p> <p>Model 219 from WDD2193221A123743 to WDD2193771A114086</p> <p>Model 221 from WDD2210221A162149 to WDD2211861A178520</p> <p>Model 230 from WDB2304701F145569 to WDB2304751F046444</p> <p>Model 245 from WDD2452071J012426 to WDD2452342J340583</p> <p>Model 251 from 4JG2511221A071696 to WDC2511651A068507</p> <p>Model 451 from WME4513311K004436 to WME4513311K025567</p> <p>Model 463 from WDB4632701X164711 to WDB4632701X164711</p> | <p>SM54.21-P-0026-01AAA</p> <p>SM54.21-P-0026-01AAB</p> <p>SM54.21-P-0026-01AAC</p> <p>SM54.21-P-0026-01AAD</p> <p>SM54.21-P-0026-01AAE</p> <p>SM54.21-P-0026-01AAF</p> <p>SM54.21-P-0026-01AAG</p> <p>SM54.21-P-0026-01AAH</p> <p>SM54.21-P-0026-01AAI</p> <p>SM54.21-P-0026-01AAJ</p> <p>SM54.21-P-0026-01AAK</p> <p>SM54.21-P-0026-01AAL</p> <p>SM54.21-P-0026-01AAM</p> <p>SM54.21-P-0026-01AAN</p> <p>SM54.21-P-0026-01AAO</p> <p>SM54.21-P-0026-01AAP</p> |
| ⚠ | Checking | | |
| 1 | Connect Xentry DAS | <p>i If Xentry DAS is already connected, proceed with operation step 2. Use Xentry DAS version 09/2009 or higher. The steps must be performed in accordance with Xentry DAS.</p> | AD00.00-P-2000-04A |
| 2 | Connect battery charger | <p>Model 168</p> <p>Models 169, 245</p> <p>Model 171</p> <p>Model 203, 209</p> <p>Model 204</p> <p>Model 211</p> <p>Model 216</p> <p>Model 221</p> <p>Model 230</p> | <p>AR54.10-P-1130Z</p> <p>AR54.10-P-1130AK</p> <p>AR54.10-P-1130V</p> <p>AR54.10-P-1130P</p> <p>AR54.10-P-1130CW</p> <p>AR54.10-P-1130T</p> <p>AR54.10-P-1130SY</p> <p>AR54.10-P-1130SX</p> <p>AR54.10-P-1130I</p> |

| | | | |
|---|----------------------------------|---|--------------------|
| | | Model 251 Model 463 i Use the battery charger to ensure that an adequate power supply (min. 12.5 V) is provided for the on-board electrical system battery. | AR54.10-P-1130RT |
|  | Remove/install | | |
| 3 | Select vehicle via Xentry | Except model 204 i On model 204 do not select the vehicle via Xentry but select via "Start"- "Programs"- "Star Diagnosis"- "DAS" . For this a password is to be commissioned for "Star Diagnosis"- "User HelpDesk" quoting the vehicle ident number and the Xentry DAS version used. | |
| 4 | Select coding measure | i Select menu item "Checking for required coding measure". | |
| 5 | Carry out appropriate SCN coding | i Menu item "Control unit adaptations", Carry out "SCN coding". i The operation step is to be used at the corresponding frequency. | |
| 6 | Complete Xentry DAS | | AD00.00-P-2000-04A |

| | | | |
|----------------------|--|---|--|
| SM54.21-P-0026-01AAJ | Affected vehicles: Carry out SCN coding of control units | Model 219 from WDD2193221A123743 to WDD2193771A114086 | |
|----------------------|--|---|--|

| | | | | |
|-------------------|-------------------|-------------------|-------------------|-------------------|
| WDD2193221A123743 | WDD2193221A124831 | WDD2193221A127478 | WDD2193222A139824 | WDD2193541A141007 |
| WDD2193561A000931 | WDD2193561A003130 | WDD2193561A004452 | WDD2193561A007435 | WDD2193561A008464 |
| WDD2193561A009656 | WDD2193561A011233 | WDD2193561A011750 | WDD2193561A012352 | WDD2193561A013420 |
| WDD2193561A020374 | WDD2193561A026977 | WDD2193561A027264 | WDD2193561A029529 | WDD2193561A031447 |
| WDD2193561A031997 | WDD2193561A032529 | WDD2193561A032624 | WDD2193561A034721 | WDD2193561A037232 |
| WDD2193561A039298 | WDD2193561A040432 | WDD2193561A053985 | WDD2193561A054265 | WDD2193561A063819 |
| WDD2193561A083150 | WDD2193561A094517 | WDD2193561A140130 | WDD2193562A019680 | WDD2193562A020698 |
| WDD2193562A023667 | WDD2193562A024145 | WDD2193562A027982 | WDD2193562A028351 | WDD2193562A030698 |
| WDD2193562A032392 | WDD2193562A036527 | WDD2193562A041146 | WDD2193562A066574 | WDD2193571A138650 |
| WDD2193721A071080 | WDD2193721A123880 | WDD2193721A128206 | WDD2193721A130296 | WDD2193771A099978 |
| WDD2193771A107330 | WDD2193771A114086 | | | |

| | | | |
|----------------------|--|---|--|
| SM54.21-P-0026-01AAE | Affected vehicles: Carry out SCN coding of control units | Model 203 from WDB2030071A828358 to WDC2030562R243686 | |
|----------------------|--|---|--|

| | | | | |
|-------------------|-------------------|-------------------|-------------------|-------------------|
| WDB2030071A828358 | WDB2030521A843460 | WDB2030521A859764 | WDB2030521A871782 | WDB2030521A879646 |
| WDB2030521A893586 | WDB2030521A896392 | WDB2030521A897233 | WDB2030521A903277 | WDB2030521A917252 |
| WDB2030521F732785 | WDB2030521F738865 | WDB2030521F742837 | WDB2030521F744802 | WDB2030521F745405 |
| WDB2030521F745409 | WDB2030521F746098 | WDB2030521F758576 | WDB2030521F759533 | WDB2030521F781812 |
| WDB2030521F819267 | WDB2030521F820899 | WDB2030525E020160 | WDB2030525E021013 | WDB2030525E022415 |
| WDB2030541A836517 | WDB2030541A844455 | WDB2030541A851743 | WDB2030541A917502 | WDB2030541F756360 |
| WDB2030541F803125 | WDB2030561F736991 | WDB2030561F740082 | WDB2030761F617366 | WDB2030761F727798 |
| WDB2030761F805975 | WDB2030871F754110 | WDB2030871F787192 | WDB2030921F755224 | WDB2030921F765041 |
| WDB2030921F765185 | WDB2030921F804766 | WDB2030921F816477 | WDB2030921F826162 | WDB2030921F856124 |
| WDB2030921F878699 | WDB2030921F880684 | WDB2030921F908653 | WDB2030921F911562 | WDB2030921F918983 |
| WDB2032521F857010 | WDB2032521F870360 | WDB2032541F866457 | WDB2032762F639555 | WDB2032921F828842 |
| WDB2037461A622438 | WDB2037522A834033 | WDB2037561A968820 | WDC2030462R165622 | WDC2030522R238360 |
| WDC2030522R245167 | WDC2030562R243686 | | | |

| | | | |
|----------------------|--|---|--|
| SM54.21-P-0026-01AAF | Affected vehicles: Carry out SCN coding of control units | Model 204 from WDD2040071A011708 to WDD2042891F177152 | |
|----------------------|--|---|--|

| | | | | |
|-------------------|-------------------|-------------------|-------------------|-------------------|
| WDD2040071A011708 | WDD2040071A030094 | WDD2040071A052613 | WDD2040071A059325 | WDD2040071A063936 |
| WDD2040071A064346 | WDD2040071A065622 | WDD2040071A066665 | WDD2040071A070824 | WDD2040071A071266 |
| WDD2040071A071421 | WDD2040071A072875 | WDD2040071A073964 | WDD2040071A074263 | WDD2040071A075114 |
| WDD2040071A084269 | WDD2040071A086892 | WDD2040071A093962 | WDD2040071A098880 | WDD2040071A099881 |
| WDD2040071A104229 | WDD2040071A105571 | WDD2040071A105930 | WDD2040071A116566 | WDD2040071A134145 |
| WDD2040071A134772 | WDD2040071A142936 | WDD2040071A145469 | WDD2040071A150695 | WDD2040071A151869 |
| WDD2040071A162324 | WDD2040071A176111 | WDD2040071A179078 | WDD2040071F059528 | WDD2040071F064934 |
| WDD2040071F065393 | WDD2040071F089715 | WDD2040071F096476 | WDD2040071F097193 | WDD2040071F104317 |
| WDD2040072A068152 | WDD2040072A148949 | WDD2040081A000180 | WDD2040081A000405 | WDD2040081A001395 |
| WDD2040081A001425 | WDD2040081A001489 | WDD2040081A002045 | WDD2040081A002047 | WDD2040081A002052 |
| WDD2040081A002127 | WDD2040081A002788 | WDD2040081A002900 | WDD2040081A002967 | WDD2040081A003288 |
| WDD2040081A003323 | WDD2040081A003808 | WDD2040081A004127 | WDD2040081A004246 | WDD2040081A005650 |
| WDD2040081A005727 | WDD2040081A007227 | WDD2040081A007563 | WDD2040081A007800 | WDD2040081A008335 |
| WDD2040081A009008 | WDD2040081A009952 | WDD2040081A010100 | WDD2040081A010333 | WDD2040081A010371 |
| WDD2040081A010691 | WDD2040081A011164 | WDD2040081A011639 | WDD2040081A012843 | WDD2040081A013320 |
| WDD2040081A013371 | WDD2040081A014604 | WDD2040081A016141 | WDD2040081A016548 | WDD2040081A016876 |
| WDD2040081A017021 | WDD2040081A017226 | WDD2040081A018228 | WDD2040081A018354 | WDD2040081A018554 |
| WDD2040081A018597 | WDD2040081A020303 | WDD2040081A020695 | WDD2040081A022409 | WDD2040081A022809 |
| WDD2040081A023777 | WDD2040081A025079 | WDD2040081A026006 | WDD2040081A027256 | WDD2040081A028466 |
| WDD2040081A028982 | WDD2040081A029095 | WDD2040081A029597 | WDD2040081A031127 | WDD2040081A033006 |
| WDD2040081A033085 | WDD2040081A036727 | WDD2040081A036846 | WDD2040081A037501 | WDD2040081A038265 |
| WDD2040081A038644 | WDD2040081A038783 | WDD2040081A040409 | WDD2040081A042588 | WDD2040081A043935 |
| WDD2040081A044297 | WDD2040081A045575 | WDD2040081A046309 | WDD2040081A046499 | WDD2040081A049459 |
| WDD2040081A051035 | WDD2040081A051580 | WDD2040081A051997 | WDD2040081A052305 | WDD2040081A054158 |
| WDD2040081A054963 | WDD2040081A056391 | WDD2040081A058848 | WDD2040081A060537 | WDD2040081A067472 |
| WDD2040081A069174 | WDD2040081A070674 | WDD2040081A072029 | WDD2040081A075803 | WDD2040081A076697 |
| WDD2040081A077263 | WDD2040081A080973 | WDD2040081A085155 | WDD2040081A087775 | WDD2040081A092251 |
| WDD2040081A097577 | WDD2040081A099427 | WDD2040081A099815 | WDD2040081A102704 | WDD2040081A107117 |
| WDD2040081A113446 | WDD2040081A117184 | WDD2040081A124113 | WDD2040081A125308 | WDD2040081A126887 |
| WDD2040081A127008 | WDD2040081A128226 | WDD2040081A128848 | WDD2040081A144418 | WDD2040081A146789 |
| WDD2040081A151585 | WDD2040081A157543 | WDD2040081A161246 | WDD2040081A168793 | WDD2040081A183116 |
| WDD2040081F001511 | WDD2040081F004229 | WDD2040081F004439 | WDD2040081F006794 | WDD2040081F006992 |
| WDD2040081F007107 | WDD2040081F007541 | WDD2040081F012312 | WDD2040081F013232 | WDD2040081F013261 |
| WDD2040081F016290 | WDD2040081F018423 | WDD2040081F018951 | WDD2040081F019573 | WDD2040081F021487 |
| WDD2040081F023130 | WDD2040081F024891 | WDD2040081F025096 | WDD2040081F025610 | WDD2040081F029786 |
| WDD2040081F034447 | WDD2040081F035101 | WDD2040081F036593 | WDD2040081F040259 | WDD2040081F041102 |
| WDD2040081F042987 | WDD2040081F049643 | WDD2040081F056666 | WDD2040081F057842 | WDD2040081F067453 |
| WDD2040081F072016 | WDD2040081F077513 | WDD2040081F078483 | WDD2040081F091607 | WDD2040081F094821 |
| WDD2040081F104323 | WDD2040081F126949 | WDD2040081F152050 | WDD2040081F164469 | WDD2040082A017826 |
| WDD2040082A046727 | WDD2040082A050712 | WDD2040082A050798 | WDD2040082A100640 | WDD2040082A103205 |
| WDD2040082A115309 | WDD2040082A119352 | WDD2040082A152626 | WDD2040082A159348 | WDD2040082R001928 |
| WDD2040082R002713 | WDD2040082R003896 | WDD2040082R012224 | WDD2040082R037822 | WDD2040221A015164 |
| WDD2040221A015805 | WDD2040221A016288 | WDD2040221A020761 | WDD2040221A024839 | WDD2040221A038088 |
| WDD2040221A038814 | WDD2040221A052743 | WDD2040221A072503 | WDD2040221A087113 | WDD2040221A124788 |
| WDD2040221A141385 | WDD2040221A145006 | WDD2040221A153135 | WDD2040221A154961 | WDD2040221F030839 |
| WDD2040222A065644 | WDD2040411A000239 | WDD2040411A000862 | WDD2040411A000908 | WDD2040411A000953 |
| WDD2040411A001808 | WDD2040411A004182 | WDD2040411A006977 | WDD2040411A007055 | WDD2040411A007631 |
| WDD2040411A007696 | WDD2040411A017235 | WDD2040411A022233 | WDD2040411A025386 | WDD2040411A039145 |
| WDD2040411A074772 | WDD2040411A099557 | WDD2040411A111983 | WDD2040411A112144 | WDD2040411A121136 |
| WDD2040411A152291 | WDD2040411A162708 | WDD2040411F000673 | WDD2040411F002624 | WDD2040411F005553 |
| WDD2040411F005771 | WDD2040411F008829 | WDD2040411F008912 | WDD2040411F009311 | WDD2040411F019968 |
| WDD2040411F021050 | WDD2040411F021948 | WDD2040411F023845 | WDD2040411F031705 | WDD2040411F031775 |
| WDD2040411F037273 | WDD2040411F037715 | WDD2040411F040763 | WDD2040411F042501 | WDD2040411F042953 |
| WDD2040411F052279 | WDD2040411F089843 | WDD2040411F097248 | WDD2040411F119421 | WDD2040411F160687 |
| WDD2040412A015858 | WDD2040412A033648 | WDD2040412A040998 | WDD2040412A049529 | WDD2040412A055186 |
| WDD2040412A079323 | WDD2040412A081360 | WDD2040412A111104 | WDD2040412A114555 | WDD2040412A125836 |
| WDD2040412A137761 | WDD2040412A149411 | WDD2040412R000359 | WDD2040412R004789 | WDD2040412R005353 |
| WDD2040412R005844 | WDD2040412R008798 | WDD2040412R008942 | WDD2040412R009062 | WDD2040412R009357 |
| WDD2040412R009801 | WDD2040412R010066 | WDD2040412R011327 | WDD2040415L000175 | WDD2040461A053377 |
| WDD2040461A064453 | WDD2040461A064983 | WDD2040461A070493 | WDD2040461A072311 | WDD2040461A078571 |
| WDD2040461A081315 | WDD2040461A085269 | WDD2040461A091399 | WDD2040461A091638 | WDD2040461A094201 |
| WDD2040461A097192 | WDD2040461A097583 | WDD2040461A104058 | WDD2040461A105027 | WDD2040461A105284 |
| WDD2040461A115413 | WDD2040461A117013 | WDD2040461A119511 | WDD2040461A161240 | WDD2040461A163395 |
| WDD2040461F056413 | WDD2040461F084237 | WDD2040461F149781 | WDD2040462A067694 | WDD2040462A069951 |
| WDD2040462A156963 | WDD2040521A087555 | WDD2040521A089707 | WDD2040521A098120 | WDD2040521F044649 |
| WDD2040521F144332 | WDD2040522A092912 | WDD2040541A004141 | WDD2040541A027029 | WDD2040541A037512 |

| | | | | |
|-------------------|-------------------|-------------------|-------------------|-------------------|
| WDD2040541F004823 | WDD2040541F005825 | WDD2040541F008056 | WDD2040541F010025 | WDD2040541F014959 |
| WDD2040541F021874 | WDD2040541F037569 | WDD2040541F039164 | WDD2040541F044840 | WDD2040541F052784 |
| WDD2040541F055271 | WDD2040541F056891 | WDD2040541F059815 | WDD2040541F063636 | WDD2040541F063767 |
| WDD2040541F082958 | WDD2040541F113838 | WDD2040541F128438 | WDD2040541F135270 | WDD2040541F181153 |
| WDD2040541R010330 | WDD2040541R012003 | WDD2040541R012039 | WDD2040541R016431 | WDD2040541R017443 |
| WDD2040541R017562 | WDD2040541R019286 | WDD2040541R022823 | WDD2040541R029085 | WDD2040542A014311 |
| WDD2040542A067945 | WDD2040542A068640 | WDD2040542R001518 | WDD2040545L000047 | WDD2040561A002592 |
| WDD2040561A004067 | WDD2040561A006139 | WDD2040561A076762 | WDD2040561A115513 | WDD2040561F041613 |
| WDD2040561F066597 | WDD2040561F069486 | WDD2040561F078564 | WDD2040561F100855 | WDD2040561F111527 |
| WDD2040561F124628 | WDD2040561F126520 | WDD2040561F137444 | WDD2040561F162616 | WDD2040561R021465 |
| WDD2040561R030341 | WDD2040771F128215 | WDD2040771F128335 | WDD2040771F175589 | WDD2040771F178919 |
| WDD2040811F054083 | WDD2040811F057652 | WDD2040811F059828 | WDD2040811F065544 | WDD2040811F074066 |
| WDD2040811F086053 | WDD2040811F114134 | WDD2040811F144201 | WDD2040811F151688 | WDD2040811F155691 |
| WDD2040811F157326 | WDD2040811F157722 | WDD2040871F086926 | WDD2040871F095018 | WDD2040871F129298 |
| WDD2040871F143177 | WDD2040891F061288 | WDD2040891F090488 | WDD2040891F091277 | WDD2040891F091510 |
| WDD2040891F100993 | WDD2040891F108108 | WDD2040891F188486 | WDD2042071F081658 | WDD2042071F097699 |
| WDD2042071F108773 | WDD2042071F113142 | WDD2042071F116081 | WDD2042071F145710 | WDD2042071F177348 |
| WDD2042072F123157 | WDD2042081F035427 | WDD2042081F067416 | WDD2042081F083296 | WDD2042081F084978 |
| WDD2042081F091398 | WDD2042081F093051 | WDD2042081F097987 | WDD2042081F099960 | WDD2042081F103764 |
| WDD2042081F106237 | WDD2042081F108395 | WDD2042081F110079 | WDD2042081F110927 | WDD2042081F130813 |
| WDD2042081F131153 | WDD2042081F134524 | WDD2042081F138034 | WDD2042081F138418 | WDD2042081F142143 |
| WDD2042081F170613 | WDD2042221F083474 | WDD2042221F183028 | WDD2042461F083383 | WDD2042461F097184 |
| WDD2042461F129240 | WDD2042461F133019 | WDD2042461F151970 | WDD2042461F161792 | WDD2042461F184560 |
| WDD2042462F136226 | WDD2042521F077848 | WDD2042522F158624 | WDD2042541F194429 | WDD2042891F174601 |
| WDD2042891F177152 | | | | |

| | | | |
|----------------------|--|---|--|
| SM54.21-P-0026-01AAH | Affected vehicles: Carry out SCN coding of control units | Model 211 from LE42110525L010987 to WDB2116201B258116 | |
|----------------------|--|---|--|

| | | | | |
|-------------------|-------------------|-------------------|-------------------|-------------------|
| LE42110525L010987 | LE42110541A936293 | LE42110541A941249 | LE42110541A966053 | LE42110541A975251 |
| LE42110541A982061 | LE42110541A982199 | LE42110545L000085 | LE42110545L000537 | LE42110545L004056 |
| LE42110545L004118 | LE42110545L007495 | LE42110545L007537 | LE42110545L007773 | LE42110545L009640 |
| LE42110545L011380 | LE42110545L020097 | WDB2110041A459567 | WDB2110061A786892 | WDB2110062A877173 |
| WDB2110071B051672 | WDB2110071B051702 | WDB2110071B102824 | WDB2110071B111275 | WDB2110071B152799 |
| WDB2110071B204680 | WDB2110071B207176 | WDB2110071B243604 | WDB2110071B253521 | WDB2110071B276407 |
| WDB2110071B283522 | WDB2110071B291091 | WDB2110071B310143 | WDB2110071B313644 | WDB2110071B320967 |
| WDB2110071B321108 | WDB2110071B336732 | WDB2110071B348615 | WDB2110071B354476 | WDB2110081A985667 |
| WDB2110081A988029 | WDB2110081A990055 | WDB2110081B000447 | WDB2110081B015717 | WDB2110081B036646 |
| WDB2110081B047990 | WDB2110081B049589 | WDB2110081B049825 | WDB2110081B078452 | WDB2110081B079946 |
| WDB2110081B081147 | WDB2110081B086270 | WDB2110081B097597 | WDB2110081B100918 | WDB2110081B120419 |
| WDB2110081B150132 | WDB2110081B160015 | WDB2110081B165045 | WDB2110081B190101 | WDB2110081B203472 |
| WDB2110081B258064 | WDB2110081B343214 | WDB2110082B057761 | WDB2110082B167291 | WDB2110082B249183 |
| WDB2110201A865700 | WDB2110201A887501 | WDB2110201B011440 | WDB2110201B013379 | WDB2110201B143853 |
| WDB2110201B148900 | WDB2110201B167427 | WDB2110201B286091 | WDB2110201B326687 | WDB2110202B050367 |
| WDB2110221A992734 | WDB2110221A993426 | WDB2110221A993452 | WDB2110221B100636 | WDB2110221B118315 |
| WDB2110221B122068 | WDB2110221B136235 | WDB2110221B216466 | WDB2110221B227244 | WDB2110221B268132 |
| WDB2110221B293109 | WDB2110221B342676 | WDB2110222B073803 | WDB2110222B175436 | WDB2110222B177493 |
| WDB2110231A781268 | WDB2110261A351645 | WDB2110291B159077 | WDB2110411A990195 | WDB2110411B023946 |
| WDB2110411B029628 | WDB2110411B049585 | WDB2110411B062539 | WDB2110411B066832 | WDB2110411B155392 |
| WDB2110411B214820 | WDB2110411B289745 | WDB2110412B250088 | WDB2110421A824097 | WDB2110422A462878 |
| WDB2110426A127138 | WDB2110521B194585 | WDB2110521B260885 | WDB2110541A842299 | WDB2110541A847469 |
| WDB2110541A860864 | WDB2110541A864798 | WDB2110541A892356 | WDB2110541A910245 | WDB2110541A920024 |
| WDB2110541A926154 | WDB2110541A929094 | WDB2110541A937961 | WDB2110541A948981 | WDB2110541A961125 |
| WDB2110541A961203 | WDB2110541A961687 | WDB2110541A964317 | WDB2110541A972062 | WDB2110541A977030 |
| WDB2110541A984800 | WDB2110541A988242 | WDB2110541A997227 | WDB2110541A997240 | WDB2110541A998279 |
| WDB2110541B002267 | WDB2110541B013390 | WDB2110541B016507 | WDB2110541B020691 | WDB2110541B022943 |
| WDB2110541B097426 | WDB2110541B136180 | WDB2110541B136785 | WDB2110541B163317 | WDB2110542A832004 |
| WDB2110542A849475 | WDB2110542A863982 | WDB2110542A886593 | WDB2110542A916636 | WDB2110542A927303 |
| WDB2110542A945082 | WDB2110542A946109 | WDB2110542A946980 | WDB2110542A969472 | WDB2110542B021538 |
| WDB2110542B030876 | WDB2110542B055550 | WDB2110542B061947 | WDB2110542B111720 | WDB2110542B117621 |
| WDB2110542B199226 | WDB2110542B265093 | WDB2110561A737336 | WDB2110561A741320 | WDB2110561A742716 |
| WDB2110561A743716 | WDB2110561A744056 | WDB2110561A761087 | WDB2110561A771943 | WDB2110561A774862 |
| WDB2110561A777601 | WDB2110561A787980 | WDB2110561A790506 | WDB2110561A793286 | WDB2110561A794053 |
| WDB2110561A800830 | WDB2110561A807742 | WDB2110561A811393 | WDB2110561A823395 | WDB2110561A827516 |
| WDB2110561A837363 | WDB2110561A846519 | WDB2110561A853803 | WDB2110561A856971 | WDB2110561A857889 |
| WDB2110561A869185 | WDB2110561A879061 | WDB2110561A892615 | WDB2110561A892798 | WDB2110561A893414 |
| WDB2110561A895516 | WDB2110561A897152 | WDB2110561A904263 | WDB2110561A906722 | WDB2110561A916699 |
| WDB2110561A927305 | WDB2110561A937352 | WDB2110561A938971 | WDB2110561A951208 | WDB2110561A962833 |
| WDB2110561A978065 | WDB2110561A980148 | WDB2110561A984399 | WDB2110561B000542 | WDB2110561B037582 |
| WDB2110561B040373 | WDB2110561B043491 | WDB2110561B045326 | WDB2110561B082613 | WDB2110561B132451 |
| WDB2110561B147762 | WDB2110561B161945 | WDB2110561B162403 | WDB2110561B163202 | WDB2110561B165843 |
| WDB2110561B171065 | WDB2110561B205047 | WDB2110562A740209 | WDB2110562A753673 | WDB2110562A761128 |
| WDB2110562A761511 | WDB2110562A764174 | WDB2110562A766270 | WDB2110562A766707 | WDB2110562A795631 |
| WDB2110562A821799 | WDB2110562A831926 | WDB2110562A834483 | WDB2110562A845951 | WDB2110562A861233 |
| WDB2110562A882112 | WDB2110562A884610 | WDB2110562A885765 | WDB2110562A911441 | WDB2110611A012995 |
| WDB2110612A294548 | WDB2110651A120827 | WDB2110651A170050 | WDB2110651A213381 | WDB2110651A285503 |
| WDB2110651A314416 | WDB2110651A334601 | WDB2110651X110227 | WDB2110652A116944 | WDB2110652A283324 |
| WDB2110701A022127 | WDB2110701A124114 | WDB2110701A156367 | WDB2110702A379952 | WDB2110721B003562 |
| WDB2110721B120989 | WDB2110721B143451 | WDB2110761A266680 | WDB2110821X126581 | WDB2110831X199928 |
| WDB2110841X217948 | WDB2110871B139720 | WDB2110871B145377 | WDB2110871B146599 | WDB2110871B157082 |
| WDB2110871B157488 | WDB2110871B180327 | WDB2110871B193025 | WDB2110871B220786 | WDB2110871B246355 |
| WDB2110871X181382 | WDB2110871X182985 | WDB2110871X182996 | WDB2110871X183673 | WDB2110871X187746 |
| WDB2110871X191170 | WDB2110871X191967 | WDB2110871X191983 | WDB2110871X196085 | WDB2110871X199280 |
| WDB2110871X200083 | WDB2110871X201698 | WDB2110871X208451 | WDB2110871X209075 | WDB2110871X217892 |
| WDB2110871X220602 | WDB2110891B126748 | WDB2110891B131806 | WDB2110891B245409 | WDB2110891X211337 |
| WDB2110901X222433 | WDB2110921B149116 | WDB2110921B182209 | WDB2110921X190617 | WDB2110921X208290 |
| WDB2112061A726224 | WDB2112071B255603 | WDB2112071B321280 | WDB2112081B022931 | WDB2112081B033085 |
| WDB2112081B037220 | WDB2112081B056684 | WDB2112081B154349 | WDB2112081B235714 | WDB2112082B223119 |
| WDB2112162A612101 | WDB2112201B015323 | WDB2112201B052910 | WDB2112201B067464 | WDB2112202B241407 |
| WDB2112221A999675 | WDB2112221B038107 | WDB2112221B042417 | WDB2112221B044456 | WDB2112221B097148 |
| WDB2112221B296540 | WDB2112221B326082 | WDB2112222B069560 | WDB2112261A594287 | WDB2112411B009758 |
| WDB2112411B159548 | WDB2112411B229942 | WDB2112411B234126 | WDB2112411B262679 | WDB2112411B342022 |
| WDB2112541B037267 | WDB2112541B197413 | WDB2112542A968309 | WDB2112542B072309 | WDB2112542B332732 |
| WDB2112561A885727 | WDB2112561A976498 | WDB2112562A758766 | WDB2112562A759763 | WDB2112562A760573 |
| WDB2112562A793826 | WDB2112562A802740 | WDB2112562A805958 | WDB2112562A949428 | WDB2112701A463603 |

| | | | | |
|-------------------|-------------------|-------------------|-------------------|-------------------|
| WDB2112721A984376 | WDB2112771B096015 | WDB2112871X196800 | WDB2112871X218893 | WDB2112871X220820 |
| WDB2112891X223508 | WDB2116201B258116 | | | |

| | | | |
|----------------------|--|---|--|
| SM54.21-P-0026-01AAJ | Affected vehicles: Carry out SCN coding of control units | Model 219 from WDD2193221A123743 to WDD2193771A114086 | |
|----------------------|--|---|--|

| | | | | |
|-------------------|-------------------|-------------------|-------------------|-------------------|
| WDD2193221A123743 | WDD2193221A124831 | WDD2193221A127478 | WDD2193222A139824 | WDD2193541A141007 |
| WDD2193561A000931 | WDD2193561A003130 | WDD2193561A004452 | WDD2193561A007435 | WDD2193561A008464 |
| WDD2193561A009656 | WDD2193561A011233 | WDD2193561A011750 | WDD2193561A012352 | WDD2193561A013420 |
| WDD2193561A020374 | WDD2193561A026977 | WDD2193561A027264 | WDD2193561A029529 | WDD2193561A031447 |
| WDD2193561A031997 | WDD2193561A032529 | WDD2193561A032624 | WDD2193561A034721 | WDD2193561A037232 |
| WDD2193561A039298 | WDD2193561A040432 | WDD2193561A053985 | WDD2193561A054265 | WDD2193561A063819 |
| WDD2193561A083150 | WDD2193561A094517 | WDD2193561A140130 | WDD2193562A019680 | WDD2193562A020698 |
| WDD2193562A023667 | WDD2193562A024145 | WDD2193562A027982 | WDD2193562A028351 | WDD2193562A030698 |
| WDD2193562A032392 | WDD2193562A036527 | WDD2193562A041146 | WDD2193562A066574 | WDD2193571A138650 |
| WDD2193721A071080 | WDD2193721A123880 | WDD2193721A128206 | WDD2193721A130296 | WDD2193771A099978 |
| WDD2193771A107330 | WDD2193771A114086 | | | |

| | | | |
|----------------------|--|---|--|
| SM54.21-P-0026-01AAK | Affected vehicles: Carry out SCN coding of control units | Model 221 from WDD2210221A162149 to WDD2211861A178520 | |
|----------------------|--|---|--|

| | | | | |
|-------------------|-------------------|-------------------|-------------------|-------------------|
| WDD2210221A162149 | WDD2210221A173566 | WDD2210221A192217 | WDD2210221A197981 | WDD2210281A177278 |
| WDD2210561A053864 | WDD2210562A057132 | WDD2210701A171179 | WDD2210711A217377 | WDD2210771A221752 |
| WDD2210801A203380 | WDD2210841A193447 | WDD2210871A172480 | WDD2211221A064704 | WDD2211221A223128 |
| WDD2211541A171684 | WDD2211561A032776 | WDD2211561A045452 | WDD2211561A051150 | WDD2211561A054782 |
| WDD2211561A062717 | WDD2211561A070466 | WDD2211561A074493 | WDD2211561A091039 | WDD2211561A163284 |
| WDD2211561A169941 | WDD2211561A170528 | WDD2211561A219316 | WDD2211562A004440 | WDD2211562A159592 |
| WDD2211711A030481 | WDD2211711A053402 | WDD2211711A055152 | WDD2211711A156252 | WDD2211711A188483 |
| WDD2211711A189500 | WDD2211711A200022 | WDD2211711A207672 | WDD2211711A210790 | WDD2211712A064094 |
| WDD2211761A030040 | WDD2211761A030676 | WDD2211761A031519 | WDD2211761A038786 | WDD2211761A046824 |
| WDD2211761A050956 | WDD2211761A055520 | WDD2211761A060045 | WDD2211761A064805 | WDD2211761A065017 |
| WDD2211761A065282 | WDD2211761A066716 | WDD2211761A066785 | WDD2211761A067835 | WDD2211761A070401 |
| WDD2211761A070631 | WDD2211761A071586 | WDD2211761A071751 | WDD2211761A072038 | WDD2211761A074228 |
| WDD2211761A076264 | WDD2211761A076808 | WDD2211761A077559 | WDD2211761A079018 | WDD2211761A079354 |
| WDD2211761A079940 | WDD2211761A080522 | WDD2211761A081599 | WDD2211761A082639 | WDD2211761A082833 |
| WDD2211761A083617 | WDD2211761A083912 | WDD2211761A085296 | WDD2211761A086595 | WDD2211761A087080 |
| WDD2211761A088558 | WDD2211761A089105 | WDD2211761A089640 | WDD2211761A090791 | WDD2211761A090983 |
| WDD2211761A092326 | WDD2211761A094669 | WDD2211761A096354 | WDD2211761A096636 | WDD2211761A099932 |
| WDD2211761A100043 | WDD2211761A100261 | WDD2211761A100968 | WDD2211761A101426 | WDD2211761A102593 |
| WDD2211761A104457 | WDD2211761A105112 | WDD2211761A105728 | WDD2211761A105918 | WDD2211761A107187 |
| WDD2211761A108170 | WDD2211761A110203 | WDD2211761A110645 | WDD2211761A115647 | WDD2211761A115787 |
| WDD2211761A115850 | WDD2211761A116217 | WDD2211761A117408 | WDD2211761A117697 | WDD2211761A122087 |
| WDD2211761A122713 | WDD2211761A122767 | WDD2211761A132507 | WDD2211762A037659 | WDD2211762A046207 |
| WDD2211762A107463 | WDD2211762A146153 | WDD2211771A148413 | WDD2211771A151212 | WDD2211771A170040 |
| WDD2211771A178929 | WDD2211771A219570 | WDD2211791A066876 | WDD2211791A146241 | WDD2211801A214119 |
| WDD2211861A109051 | WDD2211861A155130 | WDD2211861A178520 | | |

Message on instrument cluster "ESP Defective Service Required" with vehicle at standstill

| | |
|-------------------|--------------------------------------|
| Topic number | G142 47-P-044503 |
| Version | 3 |
| Design group | 42 47 Adaptive Brake (ABR) |
| Date | 09-28-2009 |
| Validity | Model series 221 Model series 216 |
| Reason for change | Fault code added! |

Complaint:

Message on instrument cluster "ESP Defective Service Required" and/or "BAS Defective Service Required" with vehicle at standstill.

After ignition OFF/ON, the ESP warning lamp flashes (yellow triangle) and the transmission cannot be shifted out of "P".

The vehicle can lock itself automatically.

With ignition "ON and the vehicle at a standstill, a speed of 260 km/h is displayed on the instrument cluster (IC) after approx. 2 min. The trip odometer and main odometer are incremented.

Note:

Either at least three of the following codes

- 5102 and/or
- 5112 and/or
- 5122 and/or
- 5132.

or the fault code combination

- 5995 in the ABR control unit and 722 in the transmission control unit (the code entry was made at an almost identical mileage (+/-16 km) and at the same speed; see fault freeze frame data) must be present in the ESP control unit.

Cause:

An implausible rpm sensor signal is detected by the ESP control unit (N47-5).

Remedy:

- Flash the ESP control unit
- Replace all 4 rpm sensors

| Symptoms |
|---|
| Chassis / suspension / Brake system / Service brake / Brakes, Display / Goes on |
| Chassis / suspension / Brake system / Brakes/traction regulation system / Antilock Brake System ABS / Display message / Antilock braking system - visit workshop |
| Chassis / suspension / Brake system / Brakes/traction regulation system / Electronic Stability Program ESP / Display message / Display text, yellow/white / Electronic stability program - visit workshop |

XENTRY

| |
|--|
| Chassis / suspension / Brake system / Brakes/traction regulation system / Electronic Stability Program ESP / Display message / Display text, yellow/white / Electronic stability program not available |
| Chassis / suspension / Brake system / Brakes/traction regulation system / Brake assist system BAS / Display message / Brake assist - visit workshop |
| Chassis / suspension / Brake system / Brakes/traction regulation system / Brake assist system BAS / Display message / Brake assist - not available |

| Control unit/fault code | | |
|--|------------|---|
| Control unit | Fault code | Fault text |
| ABR-Adaptive Brake (SBC3) | 5132 | L6/4 (right rear speed sensor):Carry out visual inspection. |
| ABR-Adaptive Brake (SBC3) | 5102 | L6/1 (left front speed sensor) Carry out visual inspection. |
| ABR-Adaptive Brake (SBC3) | 5112 | L6/2 (right front speed sensor) Carry out visual inspection. |
| ABR-Adaptive Brake (SBC3) | 5122 | L6/3 (left rear speed sensor):Carry out visual inspection. |
| ABR-Adaptive Brake (SBC3) | 5995 | Event:Hydraulic system of brake was overheated. |
| ETC-Electronic transmission control (EGS2) | 0722 | The signal from component Y3/8n3 (Output speed sensor (VGS)) is not available. ([VGS3_*]) |

| Parts | | | | | | | |
|-------------|--------------|--------------|-----------------------|----------|-----------------------------------|-----|---------|
| Part number | xsl-Par-tes1 | xsl-Par-tes2 | Designation | Quantity | Note | EPC | Non-EPC |
| A2215400317 | | | Front axle rpm sensor | 2 | Order with Index 28 NOT 4MATIC | X | |
| A2215400517 | | | Front axle rpm sensor | 2 | ONLY 4MATIC | X | |
| A2215400117 | | | Rear axle rpm sensor | 2 | Order with Index 28 | X | |

| Work units | | | | |
|------------|--|------|-------------|------|
| Op. no. | Operation text | Time | Damage code | Note |
| 42-9873 | REPLACE RPM SENSORS (BOTH) OF 1ST AXLE FOR ESP (AFTER CHECK) | | 43A08 73 | |
| 42-9878 | REPLACE RPM SENSORS (BOTH) OF 2ND AXLE FOR ESP (AFTER CHECK) | | 43A09 73 | |

| WIS-References | | | |
|-----------------|--|------|------------|
| Document number | Title | Note | Allocation |
| AR42.30-P-0712 | Remove/install left front or right rpm sensor | | Remedy |
| AR42.40-P-0820 | Remove/install left/right rear axle rpm sensor | | Remedy |

From: "CAMA MOTORS PVT.LTD." <cama@satyam.net.in> | [Add to Address Book](#) | [This is spam](#)

To: "camamotors workshop" <cama2k2@rediffmail.com>

Subject: Fw: Recall 211 & R230 (SBC)

Date: Mon, 17 May 2004 14:52:00 IST

Note: To help protect your privacy, images from this message have been blocked. [View images](#) | [What is this?](#)

----- Original Message -----

From: <devdutta.chandavarkar@daimlerchrysler.com>
 To: <m3warranty@ddmmpi.com>; <m3bws@ddmmpi.com>;
 <warranty@autohanganarindia.com>; <ryanf@autohanganarindia.com>;
 <hrishikesh@autohanganarindia.com>; <smmbblrw@dishnetdsl.net>;
 <smmbblr@eth.net>; <121taipan@indiatimes.com>; <servicechd@taipanindia.com>;
 <servicetaipan@taipanindia.com>; <warranty@patelautoindia.com>;
 <pas_warranty@indiatimes.com>; <cama_service@indiatimes.com>;
 <cama@satyam.net.in>; <trtwnty@vsnl.net>; <tandt@ndf.vsnl.net.in>;
 <transwarr@indiatimes.com>; <transwork@vsnl.net>;
 <smmbmdsvty@dishnetdsl.net>; <ikwarranty@sify.com>;
 <benzwarranty.tvscbe@tvssons.com>; <madplhyd@eth.net>;
 <adishwar_auto@indiatimes.com>; <rajasreemotors@vsnl.net>;
 <rajasree@spectrum.net.in>; <sanghiwarranty@sanghimotor.com>
 Cc: <1302980@vsnl.net>; <thomas-garbarek@dishnetdsl.net>;
 <tekarameshan@eth.net>; <lino.marques@daimlerchrysler.com>;
 <stephen.loba@daimlerchrysler.com>; <devendra.thakur@daimlerchrysler.com>
 Sent: Monday, May 17, 2004 12:20 PM
 Subject: Recall 211 & R230 (SBC)

Handwritten notes:
 ✓
 Warranty
 ✓
 Recall 211 & R230
 ✓
 14/05

Dear Colleagues,

With reference to the subject matter, as confirmed during telecon, you have already received the related mails sent earlier to you. In this connection, please note that till the final release of the Campaign by DCAG, the letter to be sent to Customers will not be available with us. Therefore, with a view to ensure that each concerned staff member in your workshop is fully sensitised about the criticality, urgency & importance of this matter, please note & comply with the following:

We are arranging for the visits of the Service Representatives to each Dealership so that the work process is very clearly demonstrated and explained to your Team members. In view of the same, please go in contact with the Service Representative (responsible for your workshop), as soon as you have a W211 or R230 in your workshop (either from a Customer or from your Retail stock).

Ensure that the cars in your Retail stock are recoded on priority and completed at the earliest.

Please ENSURE that for each vehicle after the recoding process, take a STAR-Print out as a proof of no-defect in the vehicle.

As the contents of the Letter to be sent to the Customers for this recall action are still awaited, to ensure that the activity of this campaign goes fast, please use following means to get the affected cars to your workshops at the earliest:

Please send a normal Service Reminder to the Customer, if the car has not visited the workshop for more than a year OR where, based on the history the vehicle is expected to have covered the required mileage for the next Service. Thus when the car visits for the service, please carry out the recall action and ensure that it is properly recorded in the job card.

Additionally, for cars in the valid range of the Free Inspection period i.e. 3000- 6000 kms mileage, please send a reminder to

Welcome to Rediffmail:

and ask him to send the car to the workshop at the earliest.
During such visit ensure that the Recall action is completed as a
first priority.

Looking forward to your active support in conduct of this campaign on
priority.

with best regards,

D. Chandavarkar
Div. Manager - Field Service
DaimlerChrysler India Ltd.
15A, Chikhali, Pimpri
Pune 411018
India

Tel : +91 20 2750 5000

Fax : +91 20 2750 5963

e-mail devdutta.chandavarkar@daimlerchrysler.com

Diese E-Mail enthält vertrauliche und/oder rechtlich geschützte
Informationen. Wenn Sie nicht der richtige Adressat sind oder diese E-Mail
irrtümlich erhalten haben, informieren Sie bitte sofort den Absender und
vernichten Sie diese Mail. Das unerlaubte Kopieren sowie die unbefugte
Weitergabe dieser Mail ist nicht gestattet.

This e-mail may contain confidential and/or privileged information. If you
are not the intended recipient (or have received this e-mail in error)
please notify the sender immediately and destroy this e-mail. Any
unauthorised copying, disclosure or distribution of the material in this
e-mail is strictly forbidden.