

DAIMLERCHRYSLER

DaimlerChrysler
India Private Limited

Pune, October 12, 2004

*Name of
12 cars belong
to our territory have
Service measure
list attached.
OJW
19/10/04*

All Workshop Incharge
DC India dealerships / ASC

**Service Measure - Flash (CGW) central gateway.
Model 211**

Dear All,

We are in receipt of a subject Service Measure from DCAG, regarding flashing of Central Gateway on W 211 vehicles. The vehicle chassis number details with locations are mentioned in the enclosed CD. Please refer attached Work Instructions to carry out this activity on affected vehicles.

Operation texts and flat rates:

<u>Operation no.</u>	<u>Flat rate</u>	<u>Operation Text</u>
02-4361	0.1h	Check central gateway (following quick test)
02-4362	0.3h	Flash central gateway (quick test)

Damage Code: 054 940 318

Cost Settlement:

A warranty/goodwill claim for the costs of labour and material (if any) may be submitted to JS. quoting the **accounting number 54 940 31**.

Completion Deadline:

The above campaign should be completed by **30th April 2005**.

Cont.....2

Board of Management :
Dr. Klaus-Peter Arnold, Piyush Arora, Hans-Michael Huber (Speaker),
Suhas Kadlaskar, Rolf Löffler, Augustus Mallier, Sanjiv Sahajwala

Registered office, Corporate Office & Works
Sector 15-A, Chikhali
Pimpri, Pune 411 018 (India)
Phone: (+91) 20 27505000
www.daimlerchrysler.com

A Company of the DaimlerChrysler Group

OJW

: 2 :

Please acknowledge receipt of this letter and feel free to revert to us for any queries.

Thanking you,

With best regards,
DaimlerChrysler India Private Limited



D. Chandavarkar
General Manager
Aftersales



Ashish Salvi
Divisional Manager
Field Service

Copy to - DCIPL Service Representatives } for close follow up with the workshops

Encl. - Work Instruction
- CD containing vehicle List

Code: 0404P54A42

Work description

Flash (CGW) central gateway
Model 211

Testing procedure

Connect DAS
(DAS update 04/2004 or newer version must be used)

Software test

"Body" menu item

- 1) **CGW** - Control unit version

An update must be carried out for software with MB basic number:
A211 445 20 00, A211 445 24 00 or
A211 445 25 00, software version 033800,
see procedure.

No update is required for other MB basic numbers or
a different software release.

211.042		HOW
Steuergeräteversion		
Steuergerät	ZGW	
MB-Nummer	2114460227	
Lieferant	VDO	
Hardware-Stand	1500	
Software-Stand	033800	
Diagnoseleistung	110	
Fertigungsdatum	10.07.03	
Version (intern)	Swp2_0100	
MB-Teilenummer für Hardware	211 540 35 45	
MB-Teilenummer für Software	2114452500	
MB-Teilenummer für Daten 1	2114476051	
MB-Teilenummer für Daten 2	2114470824	

Procedure

Data backup

Menu item "Information and Communication"

- 2) **ASSYST** Print out - Actual values - Active service system since the last oil change.
- 3) **ASSYST PLUS** Print out - Actual values - CAN reception data.
Print out - Actual values - Internal ASSYST PLUS data.
Print out - General maintenance - Service memory.
- Control unit adaptations - Control unit reset
- Fault codes

If fault code 910A is now current, the CGW must be manually started!

211.042		ASSYST PLUS	
CAN-Empfangsdaten			
311	Gesamtzeit	27	
312	Bremsbeschleuniger	NICHT AKTIV	a)
313	Hinterachse - 100% Bremsbelagverschleißsensor	NICHT AKTIVERT	
314	Vorderachse - 100% Bremsbelagverschleißsensor	NICHT AKTIVERT	
315	Vorderachse - 50% Bremsbelagverschleißsensor	NICHT AKTIVERT	
316	Vorderachse - 100% Bremsbelagverschleißsensor	NICHT AKTIVERT	
317	Motorkauf	NICHT ERKANNT	
318	Ölstandkontrolle	NICHT AKTIV	
319	Zylinderabschaltung	NICHT AKTIV	
320	Geschwindigkeit	0	km/h
321	Sprache	Deutsch	
322	Wegstreifenbreite	kilometer	
323	Fahrerassistenz	0.0	

211.042		ASSYST PLUS	
Interne ASSYST-PLUS-Daten			
434	Anzahl der korrigierten Messungspositionen	33	
440	Anzahl der Entzüge im Zehner-Schalter	0	
441	Gesamtegebreteanzähler	388	km
442	Tagezurufanzähler	27	d

211.042		ASSYST	
Aktives Service-System seit letztem Ölwechsel			
722	Interne Restlaufstrecke	19612	km
795	Summe der Abzüge bei Fahrt	388	km
796	Summe der Abzüge bei Leerlauf	0	km
799	Tage seit letztem Ölwechsel	27	d
280	Restlaufzeit	703	d
297	Beworthaltender Service-Umfang	KLEIN	
324	Summe der Nachfüllungen seit letztem Ölwechsel	0.00	l
2000	Aktueller Qualitätsfaktor für Motoröl	1.33	

If a) km counter in "Internal ASSYST PLUS data" deviates from the km counter in "CAN reception data" by more than 1,000 km or b) service has been neglected for thousands of days, then carry out items 4 and 5; otherwise, proceed directly with the software update (item 6).

Adaptation of ASSYST/ASSYST PLUS values

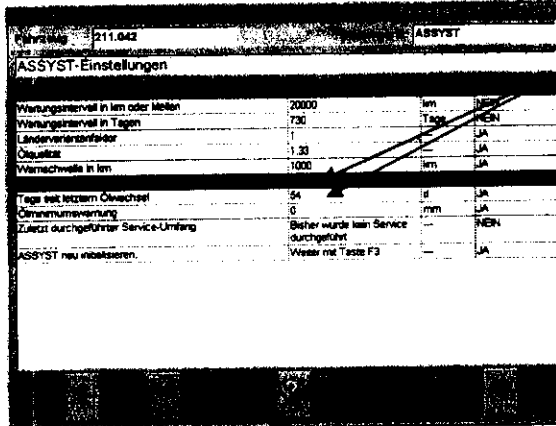
- 4) ASSYST PLUS - Control unit adaptations - Variant coding - Internal ASSYST PLUS data
- Do not change the entries in the service memory!
 - Apply kilometer reading of main odometer from "CAN reception data" (see printout).
 - Enter the operating time [in days] since initial registration, if greater than the current entry.
Rule of thumb: Number of months since initial registration x 30

211.042		ASSYST PLUS	
Interne ASSYST-PLUS-Daten			
434	Anzahl der korrigierten Messungspositionen	33	
440	Anzahl der Entzüge im Zehner-Schalter	0	
441	Gesamtegebreteanzähler	388	km
442	Tagezurufanzähler	27	d

Note: Currently, there is still a negative confirmation. Successful entries can only be checked under ASSYST PLUS - Actual values - Internal ASSYST PLUS data.

5) **ASSYST**

- Control unit adaptations - ASSYST settings
- a) Enter distance traveled since the last oil change.
- b) Enter the number of days since the last oil change.



Software update

6) **CGW**

- Control unit adaptations - Control unit programming
- a) Confirm note regarding the software modules to be programmed by pressing "F2".
- b) Select source of the flash data.
- c) Confirm established flashware with "F3"/"Yes" and initiate programming.
- d) Carry out manual rework. (Confirm note on the system diagnosis control unit manual settings by pressing 'F2'.)
 - Synchronize fault memory system diagnosis.
 - Enter unwritten codes (only for a fault).
 - Clear CGW fault memory, ASSYST, ASSYST PLUS system diagnosis.
- e) Confirm note regarding the process result by pressing "F2".
- f) Confirm process log by pressing "F2"; print beforehand if necessary.

The hardware (CGW) is not removed for this update.

Operation text and flat rate

Operation no.	Flat rate	Accounting no.
Check central gateway (following quick test) 02-4361	0.1 hours	54 940 31
Flash central gateway (following test) 02-4362	0.3 hours	54 940 31

DAIMLERCHRYSLER

DaimlerChrysler
India Private Limited

Pune, October 12, 2004

All Workshop Incharge
DC India dealerships / ASC

Service Measure - Check parameter setting of control unit, track expanded short test. Model W211 and R230

Dear All,

We have been informed by DCAG to carry out the subject action. Attached please find a CD with the list of affected vehicles. Please perform the documented action on these vehicles during their **next visit to workshop**. The related work instructions are attached herewith for your ready reference.

Operation texts and flat rates:

<u>Operation no.</u>	<u>Flat rate</u>	<u>Operation Text</u>
02-4416	0.4h	Perform expanded quick test
02-4425	0.4h	Check control unit parameterization.
02-4566		Bleed hydraulic braking system Vehicles with SBC (after quick test)
	1.0	Model 211 except 211.#76
	1.2	Model 230 except 230.474 / 476
	1.6	Model 211.#76
	1.9	Model 230.474 / 476

*Vehicles tracked
On vdc's total
Customers 8 = 37
@ 18/10/04
(19) attached*

Parts:

<u>Part Designation</u>	<u>Part No.</u>	<u>Quantity</u>
SBC module kit (consisting of SBC module, 15/47-pin adapter cable and 9-pin connecting cable)	W211 589 03 21 00	1

Cont.....2

Board of Management :
Dr. Klaus-Peter Arnold, Piyush Arora, Hans-Michael Huber (Speaker),
Suhaz Kadlaskar, Rolf Löffler, Augustus Mallier, Sanjiv Sahajwala

Registered office, Corporate Office & Works :
Sector 15-A, Chikhali
Pimpri, Pune 411 018 (India)
Phone: (+91) 20 27505000
www.mercedes-benz.co.in

A Company of the DaimlerChrysler Group

du

: 2 :

Parts:

<u>Part Designation</u>	<u>Part No.</u>	<u>Quantity</u>
Sheet of Q11 stickers (40 stickers per sheet)	A 211 584 00 07	1
Brake fluid (0.75 liter container)	A000 989 08 07 10	1
OR		
Brake fluid (5 liter container)	A000 989 08 07 11	1

Damage Code: 0439 10277 (in case of part replacement)
0439 10278 (in case of repairs without any part replacement)

Cost Settlement:

A warranty/goodwill claim for the costs of labor and material may be submitted to us, quoting the **accounting number 43 910 27**.

Completion Deadline:

The above campaign should be completed by **30th April 2005**.

Please acknowledge receipt of this letter and feel free to revert to us for any queries.

Thanking you

With best regards,
DaimlerChrysler India Private Limited



D. Chandavarkar
General Manager
Aftersales



Ashish Salvi
Divisional Manager
Field Service

Copy to - DCIPL Service Representatives } for close follow up with the workshops

Encl. - Work Instruction
- CD containing vehicle list

Board of Management :
Dr. Klaus-Peter Arnold, Piyush Arora, Hans-Michael Huber (Speaker),
Suhas Kadlaskar, Rolf Löffler, Augustus Mallier, Sanjiv Sahajwala

A Company of the DaimlerChrysler Group

Registered office, Corporate Office & Works :
Sector 15-A, Chikhali
Pimpri, Pune 411 018 (India)
Phone: (+91) 20 27505000
www.mercedes-benz.co.in

Code: 0406P43A64

Work description

Check parameter setting of control unit, track expanded short test

Affected models

Model 211 up to chassis end number	A-586.896
	X-163.060
Model 230 up to chassis end number	F-085.469

Information

For all the following operations, DAS version 08/2004 with add-on 2004-08-24-0277 or a DAS version of 09/2004 or later must be used.

Add-on 2004-08-24-0277 may only be installed on DAS version 08/2004.

If you have a DAS version prior to 08/2004, this must be replaced with a newer version before installing the add-on.

This add-on is an intermediate update required for programming the SBC system (211 and 230 model series).

Please install add-on 2004-08-24-0277 in all systems used for work on passenger cars. To do so, DAS version 08/2004 must currently be installed.

This add-on installation must be done following each installation of DAS version 08/2004.

DAS version 09/2004 and later includes the functionality of this add-on.

The serial interface (COM1) must be free. Remove any device connected to COM1. If this is the case, STAR DIAGNOSIS must be shut down and restarted.

Procedure

Note on programming the SBC control module:

- Prior to programming, ensure that there are no warning messages in the instrument cluster display. Take care of any customer complaints prior to programming the SBC control units.
- To avoid fluctuations in on-board power supply, make sure that no electrical consumers are switched on or off during the programming process.
- The programming will not be successful if the SBC control unit has undervoltage when programming is taking place. For this reason, a battery charger must be connected before programming starts.

If programming is aborted, the SBC control unit will no longer be operational!

- The SBC control unit can only be programmed for SBC hydraulic units that have a maximum temperature of 50°C and a minimum temperature of 10°C. Programming is not possible outside this temperature range. We recommend opening the engine hood to better cool down the SBC control unit. If necessary, an air gun may be used to provide additional cooling of the SBC control unit.

Never use liquids (water, etc.) to help accelerate cool down of the SBC control unit

Experience to date shows that cooling sprays must also never be used (risk of damaging internal SBC control unit components).

1. Connect STAR DIAGNOSIS to vehicle via the 16-pin diagnostic connector (X11/4).
2. Switch on ignition
3. Perform quick test, read and document fault memory.

4. Select Control unit adaptations in the SBC control unit. Procedure:

- Select menu item "Control Units"
- Select menu item "Chassis"
- Select menu item "SBC - Sensotronic Brake Control"
- Select menu item "Control Unit Adaptations"

Note:

- The DAS steps MUST be followed exactly as described.

5. When the "Control Unit Adaptations" menu item is selected the parameters are updated and STAR DIAGNOSIS checks whether the SBC control unit requires programming.

- If no programming is required, a white Q11 sticker must be affixed to the pump motor of the SBC hydraulic unit in a clearly visible position. The sticker must be applied to a clean surface. Disconnect STAR DIAGNOSIS from vehicle. The vehicle can be handed back to the customer.
- If STAR DIAGNOSIS indicates that control unit software for updating has been found, continue with **step 6**.
- Ensure that the vehicle has an adequate power supply (more than 12.5V) using a battery charger. Do not connect the negative terminal of the battery charger to the vehicle battery, but connect it to a vehicle ground instead (e.g. on the BR211, beneath the battery control unit).
- Read and observe notes on control unit programming in DAS.

6. Press F2

- The vehicle will now be checked with regard to the SBC hydraulic unit voltage supply and temperature.

7. Connect **plug A** of the 15/47-pin adapter cable (Fig. 1) to **socket A** of the SBC module (Fig. 2) and secure **plug A** using manual knurled screws.

Note:

- Ensure that the connection is correctly seated by properly tightening the manual knurled screws.
- The SBC module must be positioned in a location where the connecting cable cannot come into contact with rotating engine parts.

8. Disconnect engine wiring harness connector from SBC control unit.

9. Connect and lock **plug B** of 15/47-pin adapter cable (Fig. 1) to engine wiring harness plug.

10. Connect and lock **plug C** of 15/47-pin adapter cable (Fig. 1) to **connector strip C** (Fig. 4) of SBC control unit.

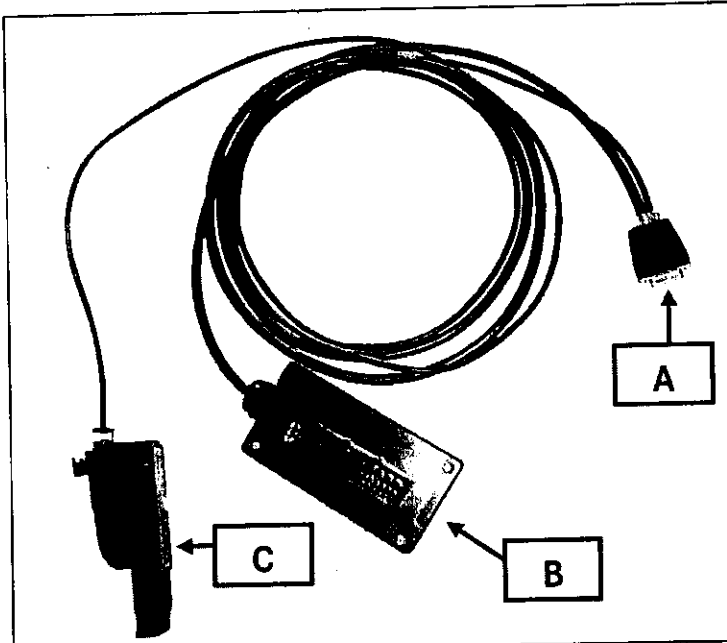


Fig. 1 - Adapter cable (15/47-pin)

- A) Plug A (15-pin, is connected to socket A of SBC module)
- B) Plug B (47-pin, is connected to engine wiring harness)
- B) Plug C (47-pin, is connected to SBC control unit)

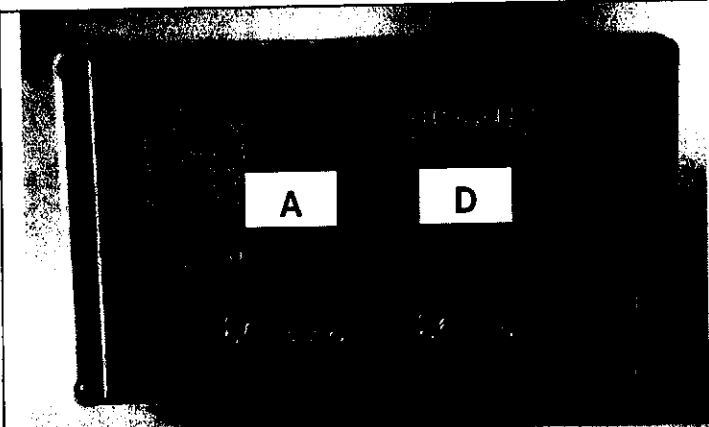


Fig. 2 - SBC Module

- A) Socket A (15-pin)
- D) Socket D (9-pin)



Fig. 3 - Connecting cable (9-pin)

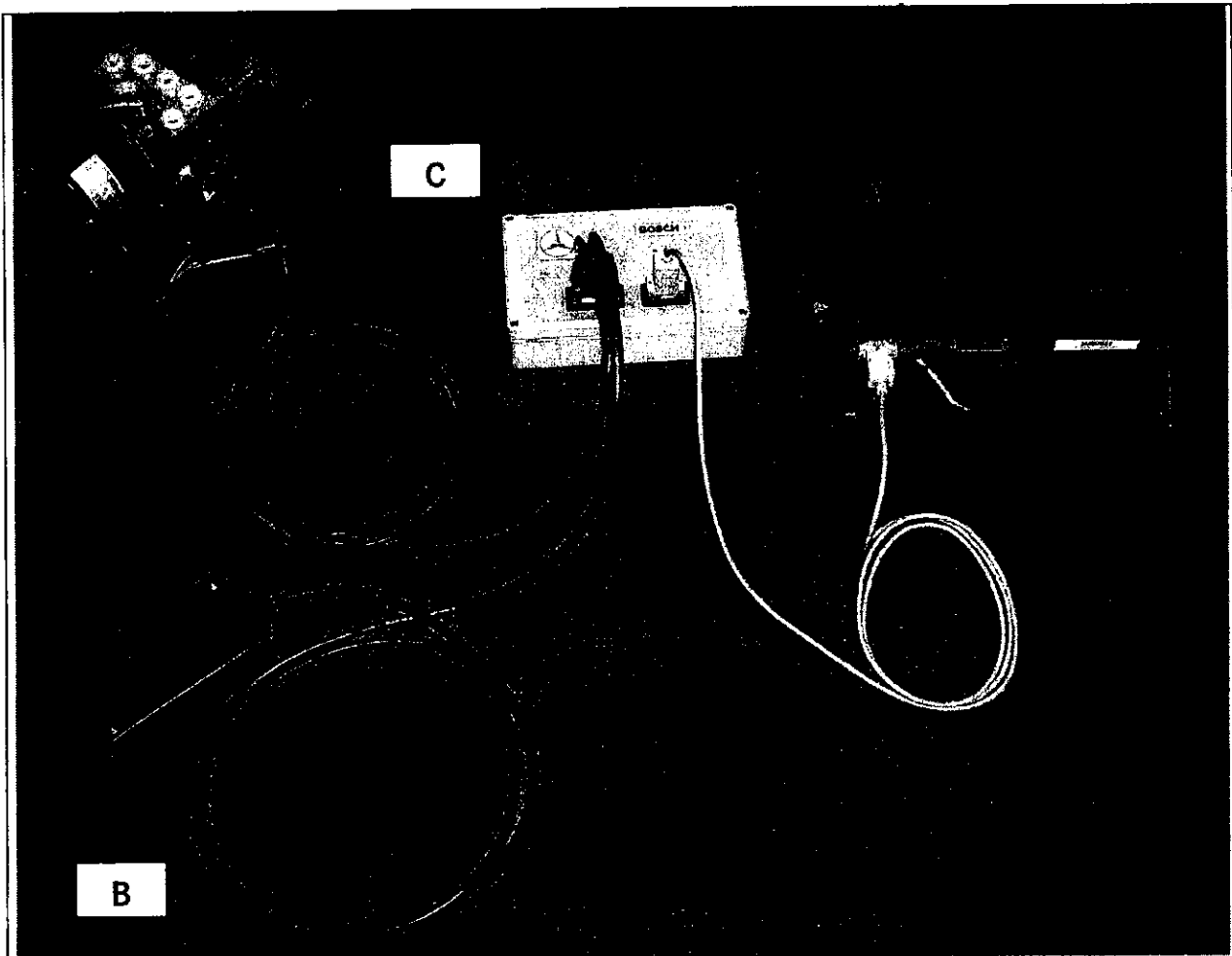


Fig. 4 - Assembly

- B) Plug B (47-pin, is connected to engine wiring harness)
C) Connector strip C (to SBC control unit)

11. Press F2.

12. Connect STAR DIAGNOSIS and SBC module.

To do this, connect either plug of the connecting cable (Fig. 3) to socket D (Fig. 2) of the SBC module and secure using manual knurled screws.

Connect the other connecting cable plug to socket E (see Fig. 4 or 5) of STAR DIAGNOSIS (serial interface COM1 (9-pin))

Note:

- Ensure that the connection is correctly seated by properly tightening the manual knurled screws.
- Ensure that the cable connection from STAR DIAGNOSIS to the 16-pin diagnostic connector (X11/4) on the vehicle is not interrupted.

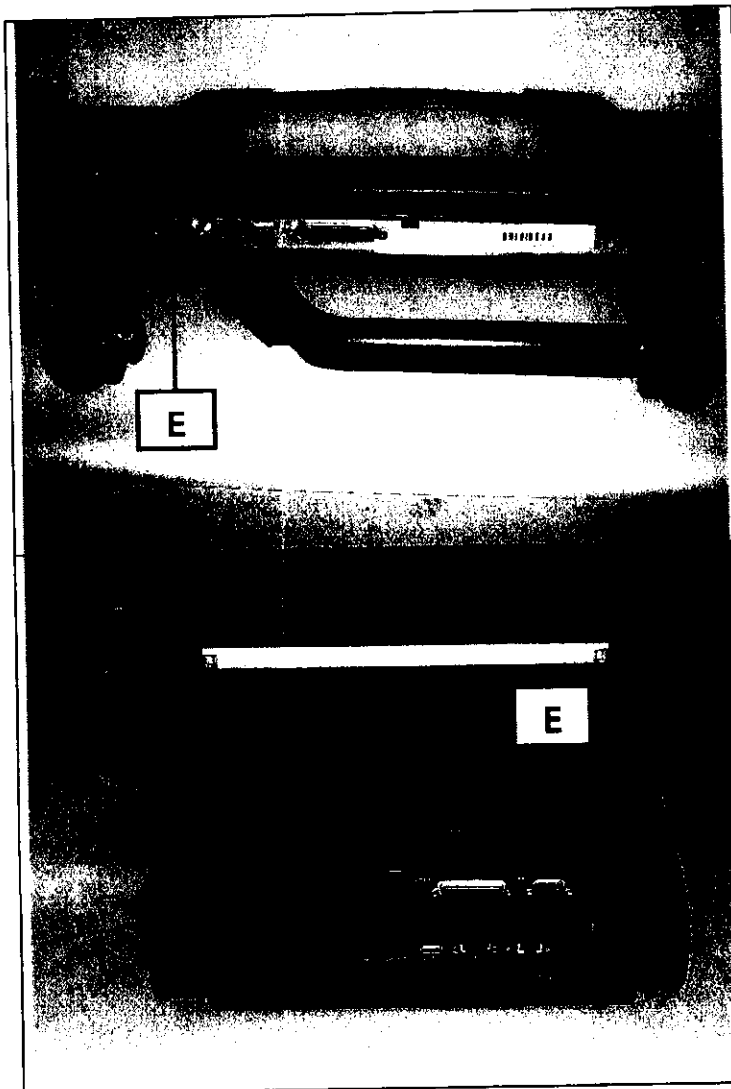


Fig. 4 - STAR DIAGNOSIS Basic

E) COM 1 serial interface (9-pin)

Fig. 5 - STAR DIAGNOSIS COMPACT II

E) COM 1 serial interface (9-pin)

13. To continue programming, press F2 and follow the DAS instructions.

14. Start programming by pressing F3.

Note:

- This procedure takes approx. 2.5 to 3 minutes.
- Follow DAS instructions.
- If programming was unsuccessful, error messages will appear. Other STAR DIAGNOSIS actions may be requested depending on the error messages.

15. Following programming, remove the adapter cable (15-/47-pin) and the connecting cable (9-pin) from STAR DIAGNOSIS and the SBC module. Reconnect engine wiring harness to SBC hydraulic unit.

Parts

Quantity	Designation	Part number
1	SBC module kit (consisting of SBC module, 15/47-pin adapter cable and 9-pin connecting cable)	W211 589 03 21 00
1	Sheet of Q11 stickers (40 stickers per sheet)	A 211 584 00 07
1	Brake fluid (0.75 liter container)	A000 989 08 07 10

Parts ordering information:

- Please only order the number of sheets of Q11 stickers that are actually required; note that each sheet contains 40 Q11 stickers.
- If several vehicles will be worked on, please order the brake fluid required for bleeding in 5-liter containers (part number A000 989 08 07 11).

Operation text and flat rate

Operation no.	Operation text	Flat rate	Accounting no.
02-4416	Perform expanded quick test	0.4 hrs.	43 910 27
02-4425	Check control unit parameterization	0.4 hrs.	43 910 27
02-4566	Bleed hydraulic braking system		43 910 27
	Vehicles with SBC (after quick test)		
	Model 211 except 211.#76	1.0 hrs.	
	Model 230 except 230.474 / 476	1.2 hrs.	
	Model 211.#76	1.6 hrs.	
	Model 230.474 / 230.476	1.9 hrs.	

DaimlerChrysler AG
Global Service & Parts

None of
vehicles belong
to our territory
total 3 cars. List
attached
19/10/04

DAIMLERCHRYSLER

DaimlerChrysler
India Private Limited

Pune, October 12, 2004

All Workshop Incharge
DC India dealerships / ASC

**Service Measure – Check COMAND & flash if necessary.
Model 211 with SA code 526, 527**

Dear All,

We are in receipt of a subject Service Measure from DCAG. The detailed work instructions are enclosed herewith. Please perform this measure on the vehicles mentioned in the CD during their next visit to workshop.

Operation texts and flat rates:

<u>Operation no.</u>	<u>Flat rate</u>	<u>Operation Text</u>
02-4441	0.1h	Check COMAND software (after quick test)
02-4388	0.3h	Install COMAND software (after inspection)

Special tool:

<u>Designation</u>	<u>Part No.</u>	<u>Quantity</u>
Update CD	W 211 589 06 22 00	1

Damage Code: 082 980 467

Cost Settlement:

A warranty/goodwill claim for the costs of labor and material (if any) may be submitted to us, quoting the **accounting number 82 980 46**.

Cont.....2

Board of Management :
Dr. Klaus-Peter Arnold, Piyush Arora, Hans-Michael Huber (Speaker),
Suhas Kadlaskar, Rolf Löffler, Augustus Mallier, Sanjiv Sahajwala

A Company of the DaimlerChrysler Group

Registered office, Corporate Office & Works
Sector 15-A, Chikhali
Pimpri, Pune 411 018 (India)
Phone: (+91) 20 27505000
www.mercedes-benz.co.in

: 2 :

Completion Deadline:

The above campaign should be completed by **30th April 2005**.

Please acknowledge receipt of this letter and feel free to revert to us for any queries.

Thanking you,

With best regards,
DaimlerChrysler India Private Limited



D. Chandavarkar
General Manager
Aftersales



Ashish Salvi
Divisional Manager
Field Service

Copy to - DCIPL Service Representatives) for close follow up with the workshops

Encl. - Work Instruction
- CD containing vehicle list

Code: 0404P82A49

Check COMAND and flash if necessary
Model 211 with SA code 526, 527

Testing procedure

1. Check SW status of the COMAND in the control unit version. If SW < 15/04, then flash the COMAND.

Procedure

2. Turn on COMAND. No CD/DVD in drive of COMAND.
3. Press buttons 1, 3 and 8 at the same time
4. Insert service CD when message "Insert service CD" appears.
5. Carry out Head Unit update as described in SI82.85-P-0010A.

Special tool

Quantity	Designation	Part no.
1	Update CD	W 211 589 06 22 00

Operation text and flat rate

Operation no.	Flat rate	Accounting no.
Check COMAND software (after quick test) 02-4441	0.1 h	82 980 46
Install COMAND software (after inspection) 02-4388	0.3 h	82 980 46

DaimlerChrysler AG
Global Service & Parts

Pune, October 12, 2004

All vehicles tracked on VDI's total customers list attached. DM 19/10/04

All Workshop Incharge
DC India dealerships / ASC

Service Measure - Check audio gateway and flash (with flashable AGW) if necessary. Model 211 with Audio20CC and with special equipment (SA) code 525, 526, and 527. (except USA / Canada & Japan version)

Dear All,

We are in receipt of a subject Service Measure from DCAG. The audio gateway unit of affected vehicles is to be checked and flashed if necessary. Attached here with, please find the detailed Work Instructions. Please perform this measure on the vehicles during their **next visit to the workshop.**

Operation texts and flat rates:

<u>Operation no.</u>	<u>Flat rate</u>	<u>Operation Text</u>
02-4439	0.1h	Check audio gateway control unit software (after quick test)
02-4384	0.3h	Install audio gateway software on control unit (after inspection)

Damage Code: 082960328

Cost Settlement:

A warranty/goodwill claim for the costs of labor and material (if any) may be submitted to us, quoting the **accounting number 82 960 32.**

Completion Deadline:

The above campaign should be completed by **30th April 2005.**

Cont.....2

DM

Please acknowledge receipt of this letter and feel free to revert to us for any queries.

Thanking you,

With best regards,
DaimlerChrysler India Private Limited



D. Chandavarkar
General Manager
Aftersales



Ashish Salvi
Divisional Manager
Field Service

Copy to - DCIPL Service Representatives) for close follow up with the workshops

Encl. - Work Instruction
- CD containing vehicle list

Code: 0404P82A41

Work description

Check audio gateway and flash (with flashable AGW) if necessary
Model 211 with Audio20CC and with special equipment (SA) code 525, 526, 527 (except
USA/Canada and Japan version)

Testing procedure

1. Check SW status of audio gateway in the control unit version. If SW < 43/03, then flash the audio gateway (SW min. 43/03)

Procedure

2. Flash Audio Gateway using DAS.

Operation text and flat rate

Operation no.	Flat rate	Accounting no.
Check audio gateway control unit software (after quick test) 02-4439	0.1 h	82 960 32
Install audio gateway software on control unit (after inspection) 02-4384	0.3 h	82 960 32

DaimlerChrysler AG
Global Service & Parts

DAIMLERCHRYSLER

DaimlerChrysler
India Private Limited

Pune, June 24, 2005

Workshop Incharge

DC India Authorised Workshops

Service Measure during next workshop visit

[REDACTED]

Accounting No. 5498031.

Dear All,

We are in receipt of the subject Service Measure from DCAG for vehicle model W 211. On these vehicles, implausible or illogical messages can appear in the instrument cluster and consumers are then shut down. The reason for this is that the battery control unit (BSG) has evaluated the charge level of the battery as good although the actual charge level is insufficient. For this reason we need to reprogram the vehicle's battery control unit on the vehicle's **next visit to the workshop**. Please refer to the accompanying work descriptions for the procedures.

During the reprogramming, please ensure that there is a sufficient vehicle voltage supply (greater than 12.5 V) using the battery charger. If programming is aborted, the battery control unit will not be operational anymore.

The list of the affected vehicles is included in the enclosed CD. Please note that the locations mentioned in the list are only indicative and any vehicle mentioned in the list visiting your workshop has to be attended for this Campaign.

Operation texts and flat rates:

Please refer enclosed Work Instructions.

Damage code: 054980318.

Accounting No.: A warranty/goodwill claim for the costs of labour and material (if any) may be submitted to us, quoting the accounting number **5498031**.

Handwritten notes:
A note
pl. see about
Yesindia.com (www.yesindia.com)
Vasudevan
www.yesindia.com
G. Purnanandhan
Sane Vasudevan
M. R. R. R.
2
8

Board of Management
Klaus-Peter Arnold, Piyush Arora, Hans-Michael Huber (Speaker),
Suhaz Kadlaskar, Augustus Mallier, Sanjiv Sahajwala

A Company of the DaimlerChrysler Group

Registered office, Corporate Office & Works Dr.
Sector 15-A, Chikhali
Pimpri, Pune 411 018 (India)
Phone: (+91) 20 27505000
www.mercedes-benz.co.in

: 2 :

It is **mandatory** for you to ensure that the vehicles visiting your workshop are also checked and attended, if applicable, for the below mentioned Service Measures released by us.

1. Recall campaign - Mount ground line & bracket on SBC wiring harness, accounting number 5496033.
2. Recall campaign - Check SBC hydraulic unit and replace if necessary, accounting number 4391101.
3. Check alternator regulator and replace it, if necessary, accounting number 5493001.

Completion Deadline: This service measure should be completed by ~~31/03/2006~~

Kindly explain the above instructions to your concerned staff and also provide your **personal attention** to complete this campaign as soon as possible.

For any queries you may have related to this information & activities, please immediately contact the right undersigned or Mr. Devendra Thakur.

Please acknowledge receipt of this letter.

With best regards,
DaimlerChrysler India Private Limited



D. Chandavarkar
Director
After-Sales



Ashish Salvi
Dy. General Manager
Field Service

Copies to - DCIPL Service Representatives } for close follow up with the workshops.

Encl. - Work Instructions
- CD with affected vehicle details

SERVICE MEASURE WORK DESCRIPTION

Code: 0502P54A10

Program battery control unit (BSG)
Models 211 and 219

Version: 2.8

Scope of work

Note:

Before carrying out the work, ensure that the DAS version 04/05, including the 0374 add-on, or a higher DAS version is used.

If DAS is already connected to the vehicle, please begin with **step 3**.

1. Connect STAR DIAGNOSIS to the vehicle using the 16-pin diagnostic connector (X11/4).

The DAS steps must be followed exactly as described!

2. Switch on ignition.

3. Connect battery charger.

Note: Ensure that there is a sufficient vehicle voltage supply (greater than 12.5 V) using the battery charger.

- W211/C219: The negative terminal of the battery charger must not be connected to the vehicle battery but at the body bolt-on point for the battery control unit.
- S211: Battery charger must not be connected to the vehicle battery but at the jump-starting point in the engine compartment.

If programming is aborted, the battery control unit will not be operational anymore.

4. Select the battery control unit in the control unit selection menu. For this:

- Select "Control units" menu item → "Body" → "Battery control unit (BSG)".

5. After the "Battery control unit (BSG)" menu item has been selected, DAS checks whether the battery control unit has to be programmed.

- If DAS indicates that the control unit has to be programmed, continue with the F3 "YES" key.
- If it does not need to be programmed, the "Standard control unit menu selection" for the "Battery control unit (BSG)" is displayed. In this case, continue with **step 7**.

6. Program "Battery control unit (BSG)".

Note: If "SDflash release directory" is requested, the hard drive as well as the DVD drive can be selected (flash software is identical in both directories).

7. Disconnect STAR DIAGNOSIS from the vehicle using the 16-pin diagnostic connector (X11/4).

Operation text and flat rate

Operation no.	Operation text	Flat rate	Accounting no.
02-4762	Disconnect and connect Diagnosis Assistance System (DAS)	0.2 hours	5498031
02-4763	Program battery control unit (BSG) (DAS connected)	0.1 hours	5498031

DaimlerChrysler AG
Global Service & Parts

MODEL 211

Modification notes

28.10.03	Notes on Remedy updated: Part numbers and Quality (Q) statuses		
----------	--	--	--

Operation no. of operation texts or standard texts and flat rates

Category	Op. no.	Operation text	Time	Acc. no.	Code
P	541011	Perform quick test	004 WU	---	---
P	542300	Replace control unit for on-board electrical system (after testing) Model 211.0	009 WU	---	---
P	542300	Replace control unit for on-board electrical system (after testing) Model 211.2	012 WU	---	---

Damage code	Cause	Remedy
	<p>Fault in battery control unit (BSG) Q03 status. (Part number 211 540 1345)</p> <p>I If the battery is discharged, fault 9000 "Control unit defective" may be stored by the battery control unit (BSG). This could cause the fault message "Battery: Visit workshop" to appear in the instrument cluster (IC).</p>	<p>1 Check Q status and part number of battery control unit (BSG).</p> <p>I Do not replace BSG with following part numbers: ↓</p> <p>211 540 13 45 with Q5 status or higher 211 540 27 45 with Q1 status or higher</p>
	<p>I Message: "Malfunction - Electrical consumers switched off!"</p>	<p>I If a battery control unit with part number 211 540 13 45 and Q1...Q4 status is installed: ↓</p>
54 849 73	<p>This message appears in the multifunction display of the instrument cluster if the battery control unit (BSG) detects a low battery charge level.</p> <p>Messages displayed in white serve only to inform the driver that power consumers which have no impact on driving safety will be switched off until the overall condition of the battery has stabilized.</p> <p>This message appears in the instrument cluster to notify the customer of the low capacity of the battery.</p> <p>If the battery voltage is too low, the heated seats and/or heated rear window may switch off automatically.</p> <p>Indication is provided by flashing indicator lamps on the corresponding switches.</p>	<p>2 Remove/install/replace battery control unit (BSG).</p>

MODEL 211.### ## up to 350386

Operation no. of operation texts or standard texts and flat rates

Category	Op. no.	Operation text	Time	Acc. no.	Code
P	541011	Perform quick test	004 WU	---	---
P	542300	Replace control unit for on-board electrical system (after testing) MODEL 211.0	009 WU	---	---
P	542300	Replace control unit for on-board electrical system (after testing) MODEL 211.2	012 WU	---	---

Damage code	Cause	Remedy
54 849 73	<p>Battery control unit (BSG).</p> <p>i At high temperatures (more than 50 °C) in the spare wheel well, unstable conditions can occur for the battery control unit (BSG). The BSG cannot display any voltage or current values in these conditions.</p> <p>The following fault messages could be shown in red lettering in the instrument cluster (KJ):</p> <ul style="list-style-type: none"> • "Stop! Battery/Alternator" • "Brake defective! Stop the vehicle!" 	<p>1 Check Q-status and part number of battery control unit (BSG).</p> <p>i As of VIN end no. 350387 temperature tested battery control units with a software release of Q1 (A 211 540 27 45) and with a white HT stamp on the housing are installed in the series production.</p> <p>i As of VIN end number 363850 temperature tested battery control units with a new software release of Q2 (A 211 540 27 45) are being installed in the series production. The white stamp on the housing is now omitted.</p>
	<p>i Furthermore, fault codes 9050 and 9051 for consumer shutoff stages 1 and 2 are stored in the battery control unit.</p>	<p>i If a battery control unit (BSG) is installed with an older Q-status: ↓</p>
		<p>2 Remove/install/replace battery control unit (BSG).</p>

Parts ordering notes

Part no.	Designation	Quantity
211 540 27 45	Battery control unit	as required

DAIMLERCHRYSLER

DaimlerChrysler
India Private Limited

Pune, February 20, 2007

All Workshop Incharge
DC India dealerships / ASC

Service measure during next workshop stay
Check engine control unit software and install if necessary
Model 171, 211, 219 with M 272

Dear All,

Please be informed that on models 171, 211, 219 with M 272 engines, the software of the engine control unit in the attached affected vehicle list may be faulty. This can lead to cold starting problems for low outside temperatures. The legally applicable exhaust emission values are maintained at any time. For this reason please check the software of the engine control unit in these vehicles and install if necessary. Please refer to the attached work instructions for the procedures.

Parts required: None

For operation texts and flat rates, please refer to the attached work instructions.

Damage Code: 014930368

Cost settlement:

A warranty/goodwill claim for the costs of material and labor can be submitted quoting **accounting number 1493036**.

Completion deadline

This field campaign should be completed by **31st December 2008**.

Please advise your concerned staff accordingly and ensure that each vehicle mentioned in the attached list visiting your workshop is attended for this action.

..... 2

: 2 :

Please acknowledge receipt of this letter and feel free to revert to us for any queries.

Thanking you

With best regards,
DaimlerChrysler India Private Limited



D. Chandavarkar
Director
After-Sales



Ashish Salvi
Dy. General Manager
Field Service

Copy to - DCIPL Service Representatives } for close follow up with the workshops

Encl. - Work Instructions
Affected vehicle list

WORK DESCRIPTION FOR SERVICE MEASURE

Code: 0605P14A61

Version: 2.2

Check engine control unit software and install if necessary

Model 171, 203, 209, 211, 219, with M 272

Check/Test Procedure

- i** • Use **DAS version 07/2006** with AddOn 0604 or higher DAS version.
- Please make sure to follow the steps exactly as described in DAS.
- Use battery charger to ensure sufficient power supply from vehicle **on-board electrical system battery** greater than 12.5 V.
- If DAS is already connected to the vehicle, then start with **step 2**.

1. Connect DAS.

2. Check the version of the engine control unit.

i For this, select menu item: "Control unit version".

a. If the **following versions** exist:

- For model 280 in model series 171, 203, 209, 211: M272_KE_VC7/VC8/VC9
 - For model 350 in model series 171, 203, 211, 219: M272_KE_VC6/VC7
- carry out work procedure.**

b. If **other versions** exist: **End measure.**

Work Procedure

1. Install software for engine control unit.

i Select "Control unit programming".

2. Perform SCN coding of engine control unit.

i For this, select menu item: "Initial startup".

i **Only** with vehicles with **M272_KE_VC6**.

3. Install and code transmission control unit software.

4. Disconnect DAS.

Operation Text and Flat Rate

Operation no.	Operation text	Flat rate	Accounting no.
02538801	Check engine control unit software (with DAS connected)	0.1 hours	14 930 36
02538901	Install engine control unit software (after check)	0.2 hours	14 930 36
02476201	Disconnect/connect Diagnosis Assistance System (DAS)	0.1 hours	14 930 36
02505801	Connect battery charger (with DAS connected)	0.1 hours	14 930 36
02538201	Code control unit (with DAS connected)	0.1 hours	14 930 36
02550501	Install transmission control unit software (with DAS connected) only	0.2 hours	14 930 36

M272_KE_VC6

DaimlerChrysler AG
Global Service & Parts

DAIMLERCHRYSLER

DaimlerChrysler
India Private Limited

Pune, February 20, 2007

All Workshop Incharge
DC India dealerships / ASC

Service measure during next workshop stay
Check software release of transmission control unit, install new software if necessary
Model 164, 211, 221, 230

Dear All,

Please refer to the attached affected vehicle list. On these vehicles reporting your workshop, increased wear of the torque converter lock-up clutch may occur in the long term due to the specified friction power being set too high. In order to avoid consequential damage, please check the software release of the transmission control unit of these vehicles and, if necessary, install a new software and carry out an adaptation of the transmission control unit. This work is to be carried out during the vehicles' next visit to the workshop. Please refer to the attached work instructions for the procedures.

Parts required: None

For operation texts and flat rates, please refer to the attached work instructions.

Damage Code: 027950318

Cost settlement:

A warranty/goodwill claim for the costs of material and labor can be submitted quoting **accounting number 2795031**.

Completion deadline

This field campaign should be completed by **31st December 2008**.

Please advise your concerned staff accordingly and ensure that each vehicle mentioned in the attached list visiting your workshop is attended for this action.

..... 2

: 2 :

Please acknowledge receipt of this letter and feel free to revert to us for any queries.

Thanking you

With best regards,
DaimlerChrysler India Private Limited



D. Chandavarkar
Director
After-Sales



Ashish Salvi
Dy. General Manager
Field Service

Copy to - DCIPL Service Representatives } for close follow up with the workshops

Encl. - Work Instructions
Affected vehicle list

Registered office, Corporate Office & Works :
Sector 15-A, Chikhali
Pimpri, Pune 411 018 (India)
Phone: (+91) 20 27505010
www.mercedes-benz.co.in

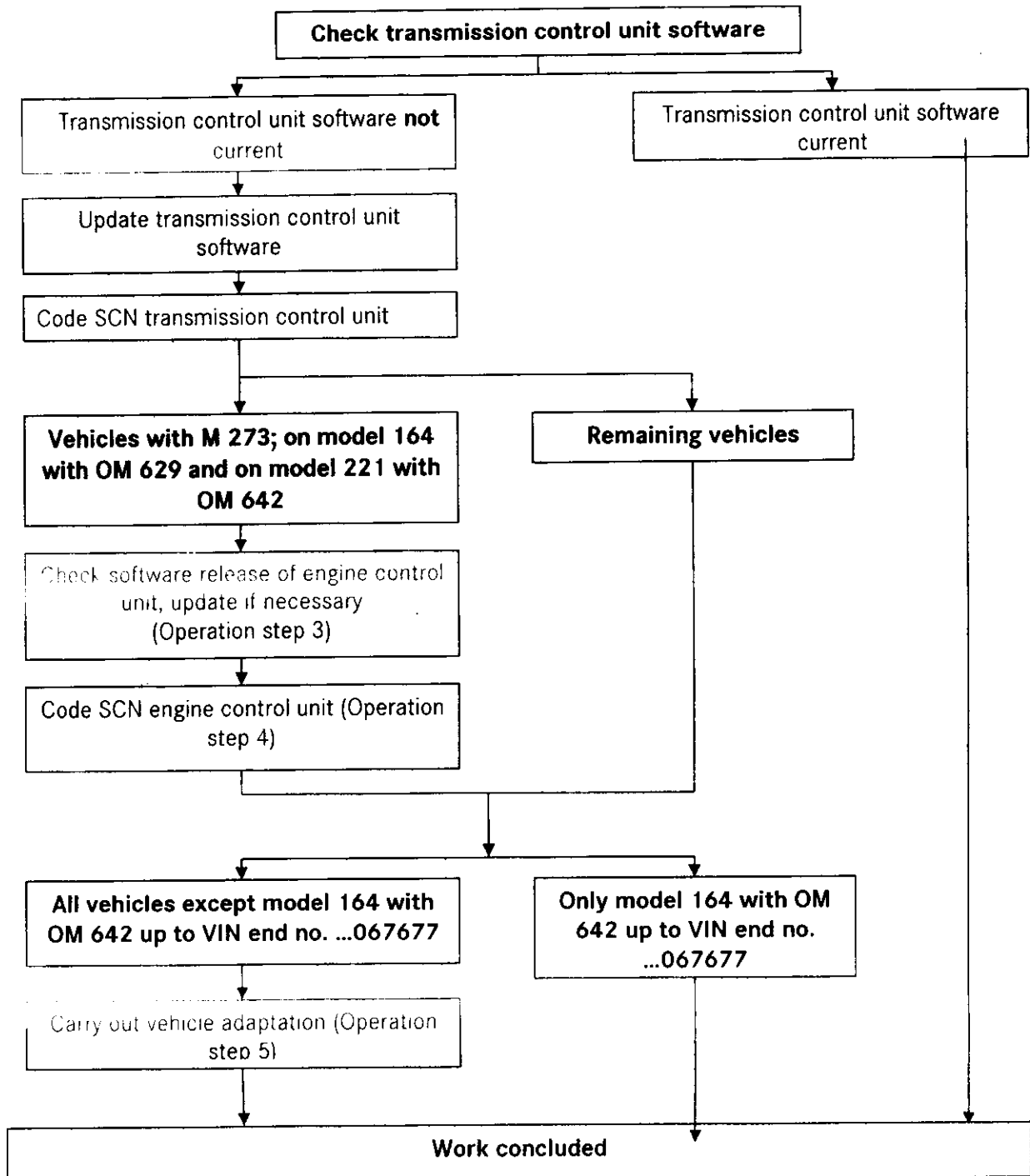
WORK DESCRIPTION FOR SERVICE MEASURE

Code: 0606P27A69

Version: 2.2

Check software release of transmission control unit, install new software if necessary
Model 164; 203; 209; 211; 219; 221; 230; 251 with M 273; OM 642; OM 629 and code 427

i Code 427 corresponds to 7-speed automatic transmission (722.9)



Brief Instructions

Modification notes:

- i** • Operation item for transmission adaptation drive added

Check/Test Procedure

- i** • Use **DAS version 9/2006 and add-on 0624** or use higher DAS version.
 - Please make sure to follow the steps exactly as described in DAS.
 - Use battery charger to ensure sufficient power supply from vehicle **on-board electrical system battery** (greater than 12.5 V).

1. Connect DAS.

2. Check software in transmission control unit.

- i** To do so, select menu item: "Control units initial startup".

- a. New software available: Carry out **work procedure**.
- b. No new software available: **End measure**

Work Procedure

1. Update software in transmission control unit.

- i** To do so, continue with menu item: "Control units initial startup".

2. Code SCN transmission control unit.

- i** To do so, continue with menu item: "Control units initial startup".

i Carry out steps 3 and 4 on all vehicles with M 273; model 164 with OM 629 and model 221 with OM 642

3. Check software in engine control unit, update if necessary.

- i** Select "Control unit adaptations".

i Coding of SCN engine control unit must be carried out, even if software in engine control unit was not updated.

4. Code SCN engine control unit.

- i** For this, select menu item: "Initial startup".

i Operation step 5 is valid for all vehicles except model 164 with OM 642 up to VIN end no. ...067677.

5. Carry out transmission adaptation:

i To do so, select menu item: "Adaptation".

i In addition to the DAS specifications, note the following:

- **The adaptation up to fourth gear must be carried out two times.**
- Select transmission mode "S".
- The respective adaptation windows 1/2; 2/3 and 3/4 are to be selected separately in DAS.
- Enter first gear manually and accelerate vehicle slightly.
- In the respective adaptation windows (DAS), operate the shift mechanism manually up to **fourth gear**.
- Let vehicle coast down each time.

6. Disconnect DAS.

Operation Text and Flat Rate

Operation no.	Operation text	Flat rate	Accounting no.
02552301	• Check transmission control unit software	0.1 h	27 950 31
02552401	• Install transmission control unit software	0.2 h	27 950 31
02476201	• Disconnect/connect Diagnosis Assistance System (DAS)	0.1 h	27 950 31
02552801	• Check engine control unit software	0.1 h	27 950 31
02552901	• Install engine control unit software	0.2 h	27 950 31
02538201*	• Code control unit (with DAS connected)	0.1 h x 2	27 950 31
02505801	• Connect battery charger (with DAS connected)	0.1 h	27 950 31
27104701	• Carry out adaptation (after repair)	0.5 h	27 950 31
* ~ This operation item is to be used one time each for coding of engine and transmission control unit			

DaimlerChrysler AG
Global Service & Parts