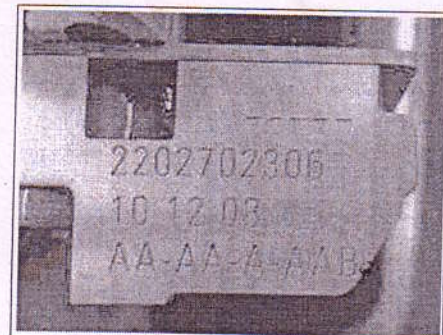


SI27.19-P-0007B	Service Information bulletin: Ordering notes for electrohydraulic actuator	20.6.11
TRANSMISSION	722.9 in MODEL 164, 171, 203, 204, 207, 209, 211, 212, 215, 216, 219, 220, 221, 230, 251	
TRANSMISSION	722.9 in MODEL 463	

Modification notes

16.6.11	Order overview augmented		
---------	--------------------------	--	--

EHS number



P27.19-2462-01

i As problems in determining the electrohydraulic actuator are occurring again and again in the EPC, we would like to present the following assessment alternatives:

1a. Diagnosis on the vehicle is possible:

To determine the correct EHS object number, the currently installed EHS should first be read out with the diagnosis.

Xentry Diagnostics:

via the rider "Control units view"- "Current quick test"- "Fully integrated transmission control"- "EHS part number".

Ordering the new EHS with this read out object number.

DAS:

"Quick test"- "EGS - electronic transmission control serial number".

Ordering the new EHS with this read out serial number.

1b. Diagnosis on the vehicle is no longer possible as the control unit no longer allows itself to respond.

The number must be read off directly by the EHS and the ordering process is started with this number.

2. Read off object number/part number is A 220 270 14 06

Depending on the vehicle model range is replaced by A 220 270 13 06 or by A 220 270 18 06.

For this the following must be observed for correct ordering:

Model 209, 211, 215, 219, 220, 230 with transmission 722.901

A 220 270 14 06 replaced by

A 220 270 18 06 replaced by

A 220 270 31 06

Model 164, 251 with transmission 722.901

A 220 270 14 06 replaced by

A 220 270 13 06 replaced by

A 220 270 27 06

Model 164, 203 with transmission 722.902

A 220 270 14 06 replaced by

A 220 270 13 06 replaced by

A 220 270 27 06

Model 171, 209, 211, 219, 221 and 230.471 with transmission 722.904

A 220 270 14 06 replaced by

A 220 270 13 06 replaced by

A 220 270 27 06

Model 209 with transmission 722.902 and engine 642.910 up to 31.5.2007

A 220 270 14 06 replaced by

A 220 270 21 06 replaced by

A 220 270 29 06

Model 209 with transmission 722.902 and engine 642.910 as of 1.6.2007

A 220 270 14 06 replaced by

A 220 270 19 06 replaced by

A 220 270 32 06

Model 164, 211, 221 with transmission 722.906

A 220 270 14 06 replaced by

A 220 270 13 06 replaced by

A 220 270 27 06

Model 171 with transmission 722.907

A 220 270 14 06 replaced by

A 220 270 13 06 replaced by

A 220 270 27 06

3. The read off object number/part number is A 220 270 12 06

For this the following must be observed for correct ordering:

Order model 219.356, 171.456 with transmission 722.906 up to and including model year 2005 (code 805)

A 220 270 12 06 .

For all other BM [model designations] (except 219.356, 171.456) order with the read off part number

A 220 270 12 06

A 220 270 12 06 replaced by

A 220 270 18 06 replaced by

A 220 270 31 06

SI27.19-P-0009A	Service information: Conversion of electrohydraulic actuator (EHS) on automatic transmission (A/T)	20.1.10
-----------------	--	---------

TRANSMISSION 722.9 in MODEL 204.022 /052 /054 /056 /077 /081 /085 /087 /089 /222 /252 /254 /256 /277 /981 /983 /987 up to 1.7.08

TRANSMISSION 722.9 in MODEL 216.371 /377 /386 up to 1.7.08

TRANSMISSION 722.9 in MODEL 221.022 /028 /054 /056 /070 /071 /077 /080 /084 /086 /087 /122 /128 /154 /156 /170 /171 /177 /180 /184 /186 /187 up to 1.7.08

i In the event of shift quality complaints on the above listed models, it is currently forbidden to replace the electrohydraulic actuator (EHS).

After replacing and commissioning the EHS, customer complaints can occur with the cruise control (CC), DISTRONIC (adaptive cruise control) and hold function.

Work is currently being carried out on a remedy for complaints relevant to the function (hardware faults on rpm sensor, control unit or EHS).

A solution is provisionally available via the Xentry Diagnostics Version 03/2010.
 Please contact the customers as soon as this is available.
 Damage code: 27401B2.
 Only the models listed with the EHS part numbers listed below may be affected, the EHS part number should be checked in the individual case:
 A 220 270 13 06
 A 220 270 18 06
 A 220 270 19 06
 A 220 270 21 06
 A 220 270 22 06