

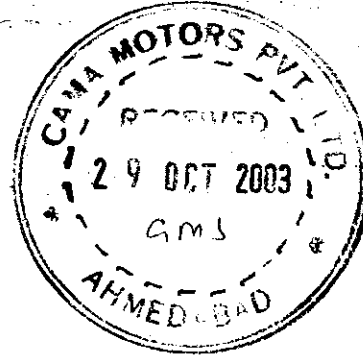
# DAIMLERCHRYSLER

DaimlerChrysler  
India Private Limited

Pune, October 22, 2003

## Kind Attention - Workshop Managers :

- ✓ Cama Motors, Ahmedabad
- Trans Cars, Chennai
- T & T Motors, New Delhi
- Adishwar Auto, Hyderabad
- Sanghi Motorcar Co., Mumbai
- Auto Hangar, Mumbai
- Patel Auto Services
- Sundaram Motors, Chennai



**Service Measure – Check for cover under air inlet slot on engine hood and retrofit if Necessary - Model W 203**

Dear All,

We are in receipt of a subject service measure from DCAG. The details of the vehicles in your responsibility is attached herewith. The vehicles where the concerned dealer could not be identified are also included in the list. If such a vehicle reports to your dealership, then please carryout this action otherwise provide us a written confirmation that the vehicle does not report to your workshop.

As per the details received from DCAG, on the above mentioned vehicles a cover under the air inlet slot of the hood may not have been installed. Please check whether this cover is present on the vehicle's next visit to workshop. If the cover is not installed, please retrofit the cover as per the work instruction attached herewith.

Operation texts and flat rates:

<u>Operation no.</u>	<u>Flat rate</u>	<u>Operation text</u>
02 – 3999	0.5 hrs.	Retrofit cover over brake fluid reservoir

<u>Parts description</u>	<u>Part no.</u>	<u>Qty. per vehicle</u>
Cover	A 203 830 16 13 05	1
Clip	A 002 988 05 42 05	1
Bracket	A 203 831 01 14 05	1

Shop Plastic  
Steel  
- 2  
- 1000  
- Holder

Items demanded

Cont.....2

DaimlerChrysler India Private Limited. Registered Office, Corporate Office & Works: Sector 15-A, Chikhali Village, Pimpri, Pune 411 018 (India)  
Phone: (+91) 20 7470810  
Managing Director & CEO: (+91) 20 7477257, Marketing: (+91) 20 7478222, Production: (+91) 20 7478780, Finance and Controlling (+91) 20 7478748,  
Corporate Affairs: (+91) 20 7473597, Human Resources: (+91) 20 7473618



Damage code

0 88920467

A warranty/goodwill claim for the costs of labour and material (if any) may be submitted to us, quoting the accounting number 8892046.

This service measure should be completed by the end of October 2004.

Please acknowledge receipt of this letter and feel free to contact us if you have any queries.

With best regards,

DaimlerChrysler India Private Limited



D.Chandavarkar  
Divisional Manager  
Field Service



Devendra Thakur  
Sr. Manager  
Customer Service

Encl. – Work Instruction  
– Vehicle List

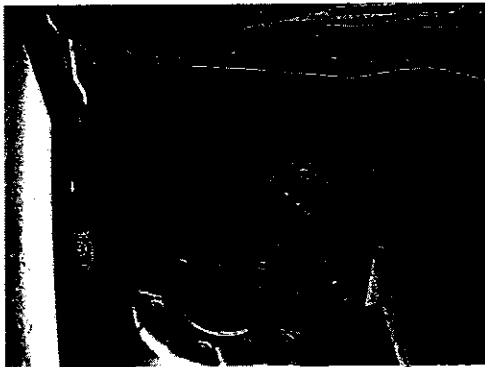
Work description for service measure at next workshop stay

**Check cover under the air inlet slits on the engine hood and retrofit if necessary.  
Model W 203 RHD**

---

**Procedure**

1. Open engine hood as described in AR88.40-P-1000M.
2. Visually inspect to see if a cover is installed on top of the brake fluid reservoir. If this is not installed (see Figure 1), continue with step 3. If the cover is installed (Figure 2), no work needs to be performed.



**Figure 1**  
Cover not installed

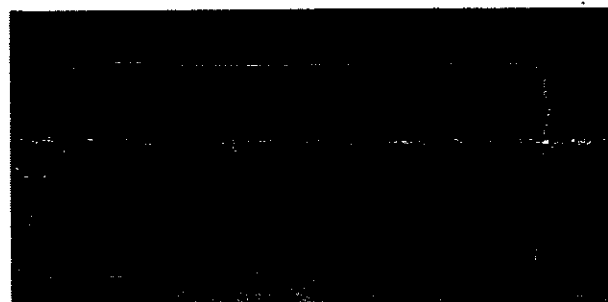


**Figure 2**  
Cover installed

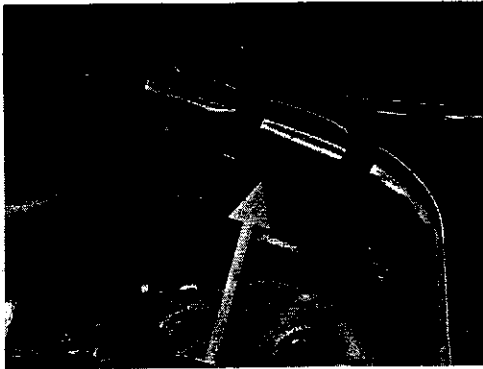
3. Remove rubber seal (Figure 3) from the partition wall and mount (Figure 5) bracket (Figure 4). Reattach rubber seal.



**Figure 3**  
Rubber seal on partition wall

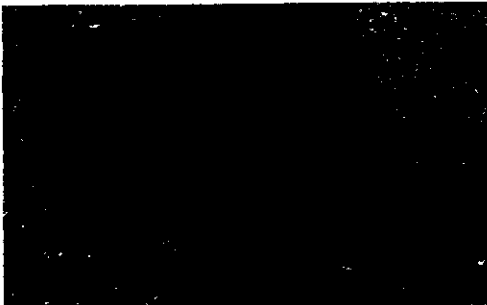


**Figure 4**  
Bracket



**Figure 5**  
**Bracket mounted to partition wall**

4. Guide the cover (Figure 6) into the bracket. Mark the position of the right interlocking hole. Cut out the interlocking hole (Figure 7). For this, it is recommended that you use a 7 mm drill bit to bore 2 holes right next to each other, then file them to an elongated hole.

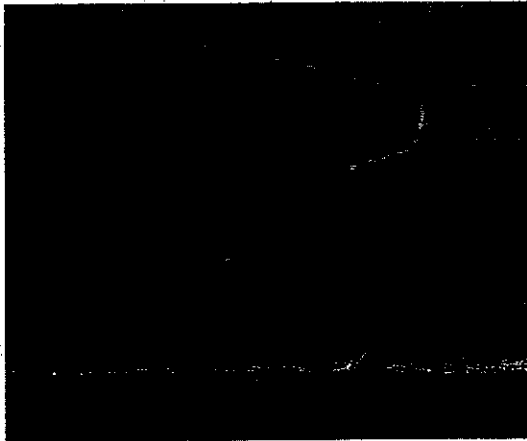


**Figure 6**  
**Cover**



**Figure 7**  
**Cut out hole**

5. Guide cover into the bracket and lock onto the cover of the wiper linkage using a clip (Figure 8).



**Figure 8**  
Clip

**Parts**

Qty.	Description	Part number
1	Cover	A 203 830 16 13
1	Clip	A 002 988 05 42
1	Bracket	A 203 831 01 14

**Operation text and flat rate**

Operation no. rate	Operation text	Flat
02-3999	Check cover under the air inlet slits on the engine hood and retrofit if necessary.	0.5 hrs.



Mercedes-Benz

Cama Motors Pvt. Ltd  
Dealer for Mercedes Benz  
Passenger Cars

Date : 31/10/03

To,  
**Mr. Devendra Thakur**  
**Sr. Manager – Customer Service**  
**DCIPL**  
Sector 15/A, Chikhali  
Pimpri  
**Pune – 411 018**

**Sub. : Service Measure.**

Dear Sir,

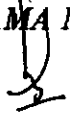
In connection with the above subject and your service measure dated 22<sup>nd</sup> October 2003, we will like to inform you that we have thoroughly checked all the 8 Chassis Numbers provided by you. Out of all the 8 Chassis Numbers only one vehicle bearing **Chassis Number : WDC2030452R011458** belongs to our territory.

In the same respect, the service measure will be completed on the said vehicle, next time when the vehicle visits our workshop.

This is for your information and action for the remaining 7 vehicles please.

With best regards

**FOR CAMA MOTORS PVT. LTD.**

  
**Major (Retd.) Vishwanathan Nair**  
(GM- Service)

  
**Alok Mehrotra**  
(Officer- Customer care)

o/c

Cama Motors Pvt. Ltd., Showroom & Workshop: Rustom Cama Marg, Lal Darwaja, Ahmedabad 380 001  
Phone: (079) 550 5281 to 89, 5505165, 5505745, 5505776 Fax: (079) 5500491  
e-mail: [cama@satyam.net.in](mailto:cama@satyam.net.in)

Sr. NO.	Chassis No.	Destination
1	WDB2030062F048137	Ahmedabad
2	WDB2030612F060006	Ahmedabad
3	WDC2030452R009426	Ahmedabad
4 ✓	WDC2030452R011458	Ahmedabad
5	WDC2030612R011811	Ahmedabad
6	WDC2030352R001525	Dealer Unknown
7	WDC2030162R015269	Dealer Unknown
8	WDC2030352R001530	Dealer Unknown

Cams hotel - Action Completed

We have thoroughly checked all the 8 chassis numbers attached with the service measure dt 22 Oct 03 and found that only one vehicle bearing ch no WDC 203 045 2R 011458 belongs to our territory. The same directed will be completed during its next visit.

The above is for your information and action for the remaining 7 vehicle please.