

DAIMLERCHRYSLER

DaimlerChrysler
India Private Limited

Pune, January 9, 2003

All Workshop Incharge
DC India dealerships / ASC

Customer Satisfaction Campaign – Replacement of bleeder valve – W 203 (C 200 CDI)

Dear All,

Based on the feedback received from the field regarding the diesel leak complaints in C 200 CDI/W203 vehicles, we have decided to initiate Customer Satisfaction Campaign for the replacement of bleeder valve.

In view of the above, we request you to carry out this campaign at your workshop. The bleeder valves should be replaced in the vehicles upto chassis serial no. 397023, which were dispatched by DC India before 31st December 2002. This is important to note since some vehicles within the above chassis no. range (still in our stock) have been rectified by us.

We are enclosing herewith a photograph of the new & old bleeder valve for your ready reference. Please ensure that the bleeder valve is replaced only if you find an old bleeder valve on the vehicle. We are also enclosing herewith a list of the chassis numbers on which bleeder valves have already been replaced in the field.

The replacement of bleeder valve should be done during the vehicle's next visit to the workshop and there is NO need to call the vehicle for this purpose alone. (However if the chassis nos. are common, this campaign can be performed during the campaigns of electronic keys & horns replacement)

Kindly instruct your parts department to keep adequate stock of the parts so that the vehicles can be attended immediately during their visit to the workshop. Kindly note that as per the new parts update, the bleeder valve is not separately available and is coming along with the line to which it is connected. Depending on the engine no. (not chassis no.), following two types of lines are to be used.

Part no. A 611 070 73 32 (from eng. No. 30 257722 upto eng. 30 368193)

Part no. A 665 070 01 32 (from eng. No. 30 368194)

Warranty / Goodwill claims for the cost of labour & material can be submitted through the usual warranty process channel quoting the accounting no. 07 276 01

Cont.....2

DaimlerChrysler India Private Limited. Registered Office, Corporate Office & Works: Sector 15-A, Chikhali Village, Pimpri, Pune 411 018 (India)
Phone: (+91) 20 7470810

Fax: Managing Director & CEO: (+91) 20 7477257, Marketing: (+91) 20 7478222, Production: (+91) 20 7478780, Finance and Controlling (+91) 20 7478748,
Corporate Affairs: (+91) 20 7473597, Human Resources: (+91) 20 7473618



Operation text and flat rates : Replacement of bleeder valve, W 203

Operation text – 07 9230 02

Flat rates – Basic work 0.7 Hrs.

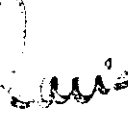
Damage code – 0 07 276 04 7

We kindly ask you to explain the above instructions to your concerned staff and also provide your personal attention to complete this campaign as soon as possible.

Kindly acknowledge receipt of this letter and in case of any queries, please feel free to contact us.

Thanking you,

With best regards,
DaimlerChrysler India Private Limited


A. Faria
General Manager
Aftersales


D. Chandavarkar
Divisional Manager
Field Service

Copies to – DCIPL Service Representatives } for close follow up with the workshops

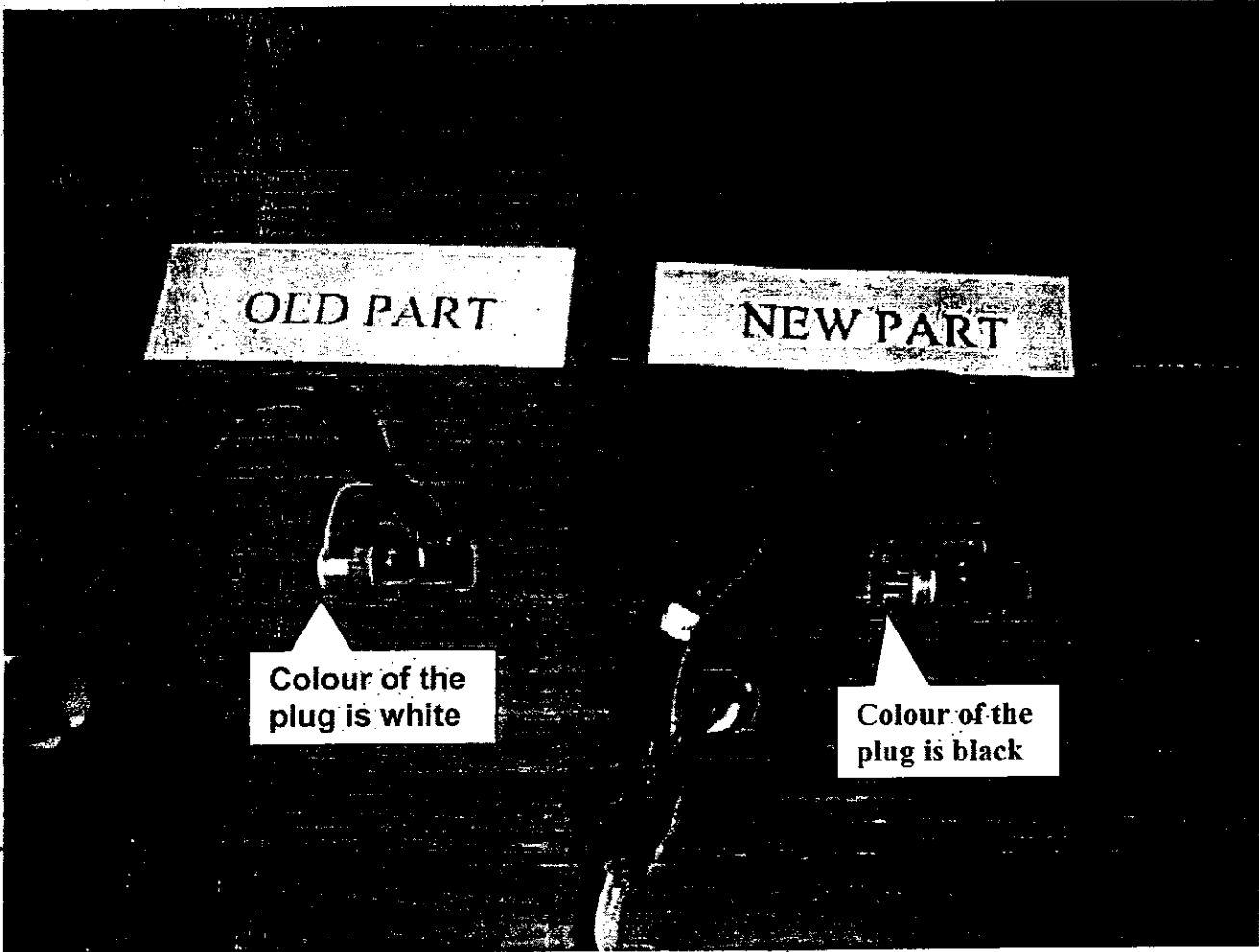
Encl. – List of chassis numbers

OLD PART

NEW PART

**Colour of the
plug is white**

**Colour of the
plug is black**



List of Chassis nos. on which bleeder valves have already been replaced

SrNo	Chassis Number	Engine Number
1	WDB2030046A091032	61196260318534
2	WDB2030046A091038	61196260318543
3	WDB2030046A091040	61196260318552
4	WDB2030046A091041	61196260318547
5	WDB2030046A101741	61196230331884
6	WDB2030046A101746	61196230331886
7	WDB2030046A101756	61196230331887
8	WDB2030046A101758	61196260318548
9	WDB2030046A101761	61196230331899
10	WDB2030046A101762	61196230331906
11	WDB2030046A101767	61196230331924
12	WDB2030046A101771	61196230331920
13	WDB2030046A101772	61196230331918
14	WDB2030046A101773	61196230331908
15	WDB2030046A101783	61196230331895
16	WDB2030046A101784	61196230331910
17	WDB2030046A101786	61196230339007
18	WDB2030046A101790	61196230331912
19	WDB2030046A119019	61196230339017
20	WDB2030046A119045	61196230339020
21	WDB2030046A119050	61196230338971
22	WDB2030046A136975	61196230355702
23	WDB2030046A136988	61196230355709
24	WDB2030046A136992	61196230355710
25	WDB2030046A136993	61196230355715
26	WDB2030046A136995	61190230355714
27	WDB2030046A136997	61196230355708
28	WDB2030046A136999	61196230355698
29	WDB2030046A137003	61196230355697
30	WDB2030046A156203	61196230355695
31	WDB2030046A156225	61196230365521
32	WDB2030046A156230	61196230365553
33	WDB2030046A156232	61196230365568
34	WDB2030046A156246	61196230365530
35	WDB2030046A156271	61196230365548
36	WDB2030046A156276	61196230365544
37	WDB2030046A156291	61196230365526
38	WDB2030046A170941	61196230379047
39	WDB2030046A170952	61196230379053
40	WDB2030046A170954	61196230379054
41	WDB2030046A170955	61196230379050
42	WDB2030046A191057	61196230952229
43	WDB2030046A191067	61196230395261
44	WDB2030046A191068	61196230395267
45	WDB2030046A191073	61196230395242
46	WDB2030046A191083	61196230393247
47	WDB2030046A191085	61196230395249
48	WDB2030046A191086	61196230395245
49	WDB2030046A191088	61196230395255
50	WDB2030046A191089	61196230395246
51	WDB2030046A191090	61196230395256
52	WDB2030046A205783	61196230409712
53	WDB2030046A205784	61196230409723

203 004 6A 191095 - Ravindra
 203 004 6A 119006 - diamond cable
 203 004 6A 191068 - Kripesh N pat
 203 004 6A 170941 - Jitendra Rana
 203 004 6A 328223 - Atul Auto
 203 004 6A 091023 - demo car

All vehicles tracked
 on vcd's. Is attached
 herewith for reference.

DAIMLERCHRYSLER

duy
rajn

DaimlerChrysler
 India Private Limited
 Pune, October 12, 2004

All Workshop Incharge
 DC India dealerships / ASC

**Service Measure - Check connectors and low pressure hoses of the high pressure pump unit, replace, if necessary.
 Model 211 with engine OM 646, 647, 648**

Dear All,

On model W 211 vehicles with engine OM 646, 647, 648, please check the connectors and low pressure hoses of the high pressure pump unit for fuel leakage. The detailed work instruction is attached here with. Please perform the above measure on vehicles mentioned in the attached CD during their **next visit to workshop.**

Operation texts and flat rates:

<u>Operation no.</u>	<u>Flat rate</u>	<u>Operation Text</u>
02-4365	0.3h	Check low pressure lines (following quick test)
02-4366	0.3h	Replace low pressure lines (following check)

Parts:

<u>Part Designation</u>	<u>Part No.</u>	<u>Quantity</u>	
Fuel hose, feed line (OM 646)	A 646 070 11 81 05	1	(3) } 646 070 20 81 / A 646 070 12 81 33 81 / 3581 3A81 0081 1081 3381
Fuel hose, return line (OM 646)	A 646 070 12 81 05	1	
Fuel hose, feed line (OM 647)	A 647 070 03 81 05	1	
Fuel hose, return line (OM 647)	A 647 070 04 81 05	1	
Fuel hose, feed line (OM 648)	A 648 070 05 81 05	1	
Fuel hose, return line (OM 648)	A 648 070 06 81 05	1	
Click clamp (OM 646,647,648)	A 006 997 18 90	3	
Click clamp (OM 646,647,648)	A 004 997 20 90	1	

Cont.....2

Board of Management :
 Dr. Klaus-Peter Arnold, Piyush Arora, Hans-Michael Huber (Speaker),
 Suhas Kadlaskar, Rolf Löffler, Augustus Mallier, Sanjiv Sahajwala

A Company of the DaimlerChrysler Group

duy

Registered office, Corporate Office & Works :
 Sector 15-A, Chikhali
 Pimpri, Pune 411 018 (India)
 Phone: (+91) 20 27505000
 www.mercedes-benz.co.in

Damage Code: 007930077 (in case of repairs with part replacement)
007930078 (in case of repairs without any part replacement)

Cost Settlement:

A warranty/goodwill claim for the costs of labor and material (if any) may be submitted to us, quoting the **accounting number 0793007**.

Completion Deadline:

The above campaign should be completed by **30th April 2005**.

Please acknowledge receipt of this letter and feel free to revert to us for any queries.

Thanking you

With best regards,
DaimlerChrysler India Private Limited



D. Chandavarkar
General Manager
Aftersales



Ashish Salvi
Divisional Manager
Field Service

Copy to - DCIPL Service Representatives } for close follow up with the workshops

Encl. - Work Instruction
- CD containing vehicle list

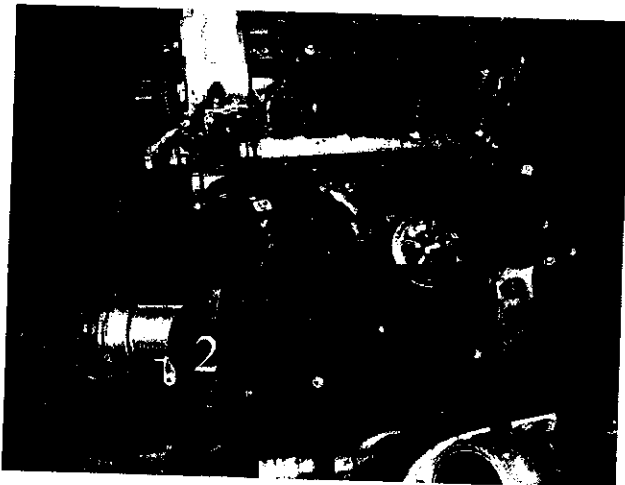
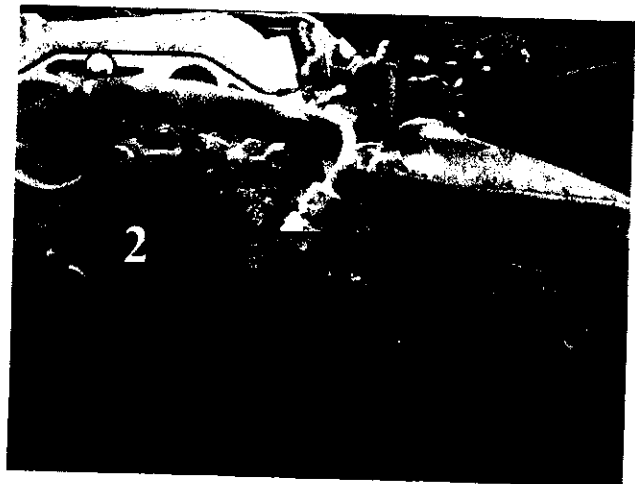
Codeword: 0404P07A45

Work description

**Check connectors and low pressure hoses of the high pressure pump unit, replace, if necessary
Model 211 with engine OM 646, 647, 648**

Work scope

1. Remove design cover.
2. Remove cover plate (1) over connectors to low pressure hoses (2) at the high pressure pump unit
3. Spray contrast medium on connectors and low pressure hoses (2)
4. Check low pressure hoses for leaktightness, replace them if necessary.
5. Remount cover plate over connectors to low pressure hoses at the high pressure pump unit
6. Remount design cover



Parts

Qty.*	Designation	Parts-No.
1	Fuel hose, feed line (OM 646)	A 646 070 11 81 05
1	Fuel hose, return line (OM 646)	A 646 070 12 81 05
1	Fuel hose, feed line (OM 647)	A 647 070 03 81 05
1	Fuel hose, return line (OM 647)	A 647 070 04 81 05
1	Fuel hose, feed line (OM 648)	A 648 070 05 81 05
1	Fuel hose, return line (OM 648)	A 648 070 06 81 05
3	Click clamp (OM 646, 647, 648)	A 006 997 18 90
1	Click clamp (OM 646, 647, 648)	A 004 997 20 90

*according to condition or model

Operation text and flat rate

Operation no.	Operation text	Flat rate
02-4365	Check low pressure lines (following quick test)	0.3 hours
02-4366	Replace low pressure lines (following check)	0.3 hours

DaimlerChrysler AG
Global Service & Parts

Service Measure - Check connectors and low pressure hoses of the high pressure pump unit, replace if necessary

Sr. No.	Chassi No.	Customer Name	Completion Status
1	WDB2110066A150308	Does not belong to our territory	—
✓ 2	WDB2110066A192422	Kishore R. Godhania	GJ3AB9929-G
3	WDB2110066A192446	Does not belong to our territory	—
✓ 4	WDB2110066A192461	Jivabhai C. Parmar	GJ3AB 601026
✓ 5	WDB2110066A237969	Prakash B. Barmecha	GJ215401 -G 17-2-05

Sunet I-d done

Jayesh Thakkar done 19-2-05

Alac
P. Steele
1/12

DAIMLERCHRYSLER

DaimlerChrysler
India Private Limited

Pune, November 26, 2004

All Workshop Incharge
DC India dealerships / ASC

**Supplement to Service Measure dated 12th October 2004 (Accounting No. 07 930 06)
Check injectors and ZME; replace, if necessary.**

Model 211 with engine OM 646, 647, 648

Dear All,

Further to the subject Service Measure, we are in receipt of a revised work instructions from DCAG. The same is enclosed for your information.

Kindly refer only the revised work instructions for carrying out the subject Service Measure.

Please acknowledge receipt of this letter and feel free to revert to us for any queries.

Thanking you

With best regards,
DaimlerChrysler India Private Limited

D. Chandavarkar
D. Chandavarkar
General Manager
Aftersales

Ashish Salvi
Ashish Salvi
Divisional Manager
Field Service

Copy to - DCIPL Service Representatives } for close follow up with the workshops

Encl. - Revised work instructions

Shel Raji

[Signature] *[Signature]* *[Signature]* *[Signature]*

Board of Management :
Dr. Klaus-Peter Arnold, Piyush Arora, Hans-Michael Huber (Speaker),
Suhaz Kadlaskar, Rolf Löffler, Augustus Mallier, Sanjiv Sahajwala

A Company of the DaimlerChrysler Group

Received through
an 1/12/04
at 12:25 pm
1/12

Registered office, Corporate Office & Works :
Sector 15-A, Chikhali
Pimpri, Pune 411 018 (India)
Phone: (+91) 20 27505000
www.mercedes-benz.co.in

Code: 0404P07A44

Work description

Check injector (leakage + quantity correction value (MAR)) and quantity control valve (metering unit – ZME), replace if necessary.

Model 211 with engine OM 646, 647, 648 without SA code 450, 970 or 965

Scope of testing

DAS check with DRV actuation module (see: WS 15.00 -P- 0044B)

Note:

Only the necessary testing scopes are displayed for each vehicle:

Preventive testing of the common rail diesel injection system requires that the engine coolant be at a temperature of at least 80°C.

**Injector "Leakage + quantity correction value + quantity control valve (metering unit - ZME)"
Vehicles up to production date 01.03**

1. Pressure drop test with DRV actuation module (up to production 01.03 (leakage)), without opening the injection system, If test concludes OK (**assessed by DAS**), i.e. no leakage detectable, DAS goes directly to the **quantity correction value test (item 2)**.

If test concludes not OK, the **"Leakage check via the small tube method"** follows (according to documentation in **DAS test step**) in order to precisely localize leakage. If the leakage quantity from one or more injectors exceeds the limit value, all injectors must be replaced at the end of the entire testing procedure (as per AR07.16-P-1000T); the results of both tests must be documented (DAS printout) and included with the injectors, which must be returned. (The installation position need not be indicated.)

In this case, the test "Quantity correction value" (item 2) is **not necessary**.

Testing of the **quantity control valve (metering unit - ZME)** will follow directly (item 3).

Important Notice:

Following test step 1 (pressure drop test), the adapter cable of the DRV module MUST be disconnected and the engine wiring harness plug reconnected to the DRV. Ensure that this is done before continuing with the remaining test steps.

2. Quantity correction value
If one or more injectors exceeds the specified limit value, only those injectors that have exceeded this value **need to be replaced (as per AR 07.16-P-1000T)**.
The results must be documented accordingly (DAS printout) and included with the injectors, which must be returned.
 3. Quantity control valve (metering unit - ZME)
If the specified limit value is exceeded, the test of the "Quantity control valve (ZME test)" must be documented accordingly (DAS printout) and the ZME replaced (as per AR07.03-P0003B).
-

**Injector "Quantity correction value + quantity control valve (metering unit - ZME)"
Vehicles as of production date 02.03 to 04.03**

1. Quantity correction value
If one or more injectors exceeds the specified limit value, only those injectors that have exceeded this value need to be replaced (as per AR07.16-P-1000T).
The results must be documented accordingly (DAS printout) and included with the injectors, which must be returned.

2. Quantity control valve (metering unit - ZME)

If the specified limit value is exceeded, the test of the "Quantity control valve (ZME test)" must be documented accordingly (DAS printout) and the quantity control valve replaced (as per AR07.03-P0003B).

Quantity control valve (metering unit - ZME)

Vehicles as of production date 05.03 to 11.03

If the specified limit value is exceeded, the test of the "Quantity control valve (ZME test)" must be documented accordingly (DAS printout) and the ZME replaced (as per AR07.03-P0003B).

Procedure

1. Remove engine covers.
2. Connect DAS.
3. Navigate to Control units => Drive => CDI3 – Common Rail Diesel Injection3 => and then "CDI injection system preventative measures" and carry out tests.
4. Connect DRV actuation module.
5. Carry out testing procedure "CDI injection system preventive measures".

Questionable components may only be replaced after all of the tests mentioned here have been carried out and completely documented.

Special tools

Quantity	Designation	Part no.
1	DRV module	W 611 589 05 2100
1	Adapter cable 2-pin	W 611 589 07 6300

Parts

Quantity	Designation	Part no.	
As req.	Injector	OM646 up to engine 30045955 OM647 up to engine 30041540	A 611 070 11 87 05 A 611 070 11 87 05
As req.	Injector	OM646 as of engine 30045956 OM647 as of engine 30041541 OM648	A 648 070 01 87 05 A 648 070 01 87 05 A 648 070 01 87 05
As req.	ZME	OM646, 647, 648	A 646 074 00 84 05

- As req. = As required according to inspection findings

Removed injectors and quantity control valves (metering units) must be returned via the usual used parts return channel.

Please cite the following on the return slip :

Accounting number: 07 930 06 and Code: 0404P07A44.

Operation text and flat rates

Operation no.	Operation text	Flat rate	Accounting no.
02-4367	Carry out diagnosis of injector , quantity correction value and metering unit (after quick test)	0,5 h	07 930 06
02-4368	Carry out diagnosis of quantity correction value and metering unit (after quick test)	0,4 h	07 930 06
02-4369	Carry out diagnosis of metering unit (after quick test)	0,4 h	07 930 06
02-4371	Carry out small tube measurement (after diagnosis)	0,4 h	07 930 06
02-4372	Replace (1) injector (after diagnosis) OM 646/ 647/ 648	0,5 h	07 930 06
02-4514	Replace (2) injectors (after diagnosis) OM 646/ 647/ 648	0,6 h	07 930 06
02-4515	Replace (3) injectors (after diagnosis) OM 646/ 647/ 648	0,8 h	07 930 06
02-4516	Replace (4) injectors (after diagnosis) OM 647/ 648	1,1 h	07 930 06
02-4517	Replace (5) injectors (after diagnosis) OM 648	1,3 h	07 930 06
02-4373	Replace (all) injectors (after diagnosis) OM 646 OM 647 OM 648	1,1 h 1,3 h 1,5 h	07 930 06 07 930 06 07 930 06
02-4374	Replace metering unit (after diagnosis)	0,4 h	07 930 06

Sub Fiji